

Datasheet for ABIN2776670  
**anti-CPEB2 antibody (N-Term)**[Go to Product page](#)

## 1 Image

## Overview

Quantity:	100 µL
Target:	CPEB2
Binding Specificity:	N-Term
Reactivity:	Human, Mouse, Rat, Guinea Pig
Host:	Rabbit
Clonality:	Polyclonal
Conjugate:	This CPEB2 antibody is un-conjugated
Application:	Western Blotting (WB)

## Product Details

Immunogen:	The immunogen is a synthetic peptide directed towards the N terminal region of human CPEB2
Sequence:	FLQQRNSYNH HQPLLKQSPW SNHQSSGWGT GSMSWGAMHG RDHRRRTGNMG
Predicted Reactivity:	Guinea Pig: 100%, Human: 100%, Mouse: 100%, Rat: 100%
Characteristics:	This is a rabbit polyclonal antibody against CPEB2. It was validated on Western Blot using a cell lysate as a positive control.
Purification:	Affinity Purified

## Target Details

Target:	CPEB2
Alternative Name:	CPEB2 ( <a href="#">CPEB2 Products</a> )

## Target Details

Background:	<p>CPEB2 is highly similar to cytoplasmic polyadenylation element binding protein (CPEB), an mRNA-binding protein that regulates cytoplasmic polyadenylation of mRNA as a trans factor in oogenesis and spermatogenesis. Studies of the similar gene in mice suggested a possible role of this protein in transcriptionally inactive haploid spermatids. The protein encoded by this gene is highly similar to cytoplasmic polyadenylation element binding protein (CPEB), an mRNA-binding protein that regulates cytoplasmic polyadenylation of mRNA as a trans factor in oogenesis and spermatogenesis. Studies of the similar gene in mice suggested a possible role of this protein in transcriptionally inactive haploid spermatids. Alternatively spliced transcript variants encoding distinct isoforms have been described.</p> <p>Alias Symbols: CPEB-2, CPE-BP2, hCPEB-2</p> <p>Protein Size: 589</p>
-------------	---

Molecular Weight:	65 kDa
-------------------	--------

Gene ID:	132864
----------	--------

NCBI Accession:	<a href="#">NM_182485</a> , <a href="#">NP_872291</a>
-----------------	---

## Application Details

Application Notes:	Optimal working dilutions should be determined experimentally by the investigator.
--------------------	--

Comment:	Antigen size: 589 AA
----------	----------------------

Restrictions:	For Research Use only
---------------	-----------------------

## Handling

Format:	Liquid
---------	--------

Concentration:	Lot specific
----------------	--------------

Buffer:	Liquid. Purified antibody supplied in 1x PBS buffer with 0.09 % (w/v) sodium azide and 2 % sucrose.
---------	---

Preservative:	Sodium azide
---------------	--------------

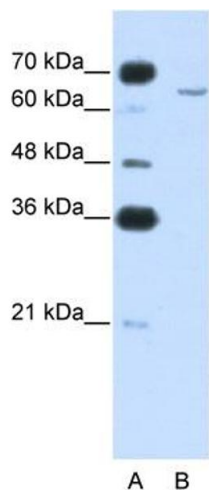
Precaution of Use:	This product contains Sodium azide: a POISONOUS AND HAZARDOUS SUBSTANCE which should be handled by trained staff only.
--------------------	--

Handling Advice:	Avoid repeated freeze-thaw cycles.
------------------	------------------------------------

Storage:	-20 °C
----------	--------

Storage Comment:	For short term use, store at 2-8°C up to 1 week. For long term storage, store at -20°C in small
------------------	---

aliquots to prevent freeze-thaw cycles.



Western Blotting

**Image 1.** WB Suggested Anti-CPEB2 Antibody Titration: 0.2-1 ug/ml ELISA Titer: 1:62500 Positive Control: Jurkat cell lysate