

Datasheet for ABIN2776674
anti-TMED4 antibody (N-Term)[Go to Product page](#)

2 Images

Overview

Quantity:	100 µL
Target:	TMED4
Binding Specificity:	N-Term
Reactivity:	Human, Mouse, Rat, Cow, Rabbit, Guinea Pig, Zebrafish (Danio rerio), Pig
Host:	Rabbit
Clonality:	Polyclonal
Conjugate:	This TMED4 antibody is un-conjugated
Application:	Western Blotting (WB), Immunohistochemistry (IHC)

Product Details

Immunogen:	The immunogen is a synthetic peptide directed towards the N terminal region of human TMED4
Sequence:	LRAMGRQALL LLALCATGAQ GLYFHIGETE KRCFIEEIPD ETMVIGNYRT
Predicted Reactivity:	Cow: 79%, Guinea Pig: 79%, Human: 100%, Mouse: 91%, Pig: 86%, Rabbit: 92%, Rat: 86%, Zebrafish: 90%
Characteristics:	This is a rabbit polyclonal antibody against TMED4. It was validated on Western Blot and immunohistochemistry.
Purification:	Protein A purified

Target Details

Target:	TMED4
---------	-------

Target Details

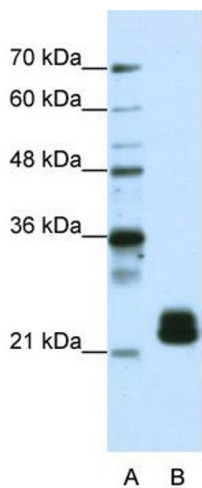
Alternative Name:	TMED4 (TMED4 Products)
Background:	<p>TMED4 contains 1 GOLD domain and belongs to the EMP24/GP25L family. The function remains unknown.</p> <p>Alias Symbols: HNLF, ERS25</p> <p>Protein Interaction Partner: UBC, rev, IKBIP, CHCHD6, SRPRB, TMED2, SF1, PPIC, SLC25A3, KIAA0368, ELAVL1, Gorasp1,</p> <p>Protein Size: 227</p>
Molecular Weight:	25 kDa
Gene ID:	222068
NCBI Accession:	NM_182547 , NP_872353
UniProt:	Q7Z7H5

Application Details

Application Notes:	Optimal working dilutions should be determined experimentally by the investigator.
Comment:	Antigen size: 227 AA
Restrictions:	For Research Use only

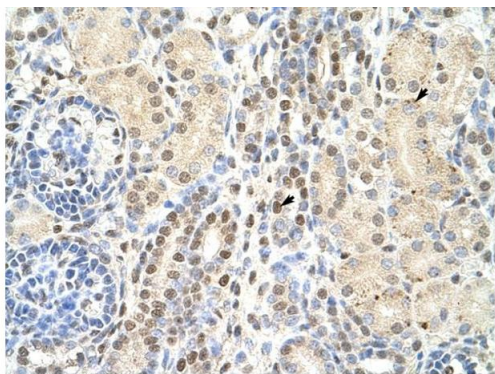
Handling

Format:	Liquid
Concentration:	Lot specific
Buffer:	Liquid. Purified antibody supplied in 1x PBS buffer with 0.09 % (w/v) sodium azide and 2 % sucrose.
Preservative:	Sodium azide
Precaution of Use:	This product contains Sodium azide: a POISONOUS AND HAZARDOUS SUBSTANCE which should be handled by trained staff only.
Handling Advice:	Avoid repeated freeze-thaw cycles.
Storage:	-20 °C
Storage Comment:	For short term use, store at 2-8°C up to 1 week. For long term storage, store at -20°C in small aliquots to prevent freeze-thaw cycles.



Western Blotting

Image 1. WB Suggested Anti-TMED4 Antibody Titration: 1.25ug/ml ELISA Titer: 1:1562500 Positive Control: HepG2 cell lysate



Immunohistochemistry

Image 2. Rabbit Anti-TMED4 Antibody Paraffin Embedded Tissue: Human Kidney Cellular Data: Epithelial cells of renal tubule Antibody Concentration: 4.0-8.0 ug/ml Magnification: 400X

Rabbit Anti-TMED4 Antibody
Catalog Number: ARP41190
Lot Number: QC9931
Paraffin Embedded Tissue: Human Kidney
Cells with Positive label: Epithelial cells of renal tubule (Indicated with Arrows)
Antibody Concentration: 4.0-8.0 µg/ml
Magnification: 400X