

Datasheet for ABIN2776684
anti-NBEAL1 antibody (N-Term)



[Go to Product page](#)

1 Image

1 Publication

Overview

Quantity:	100 µL
Target:	NBEAL1
Binding Specificity:	N-Term
Reactivity:	Human, Dog, Guinea Pig
Host:	Rabbit
Clonality:	Polyclonal
Conjugate:	This NBEAL1 antibody is un-conjugated
Application:	Western Blotting (WB)

Product Details

Immunogen:	The immunogen is a synthetic peptide directed towards the N terminal region of human NBEAL1
Sequence:	KDNDKNMSTE DTKKNSDEKT DEEKITSFAS ANVSSDQWSL EDRHSLDSNT
Predicted Reactivity:	Dog: 79%, Guinea Pig: 77%, Human: 100%
Characteristics:	This is a rabbit polyclonal antibody against NBEAL1. It was validated on Western Blot using a cell lysate as a positive control.
Purification:	Affinity Purified

Target Details

Target:	NBEAL1
---------	--------

Target Details

Alternative Name:	NBEAL1 (NBEAL1 Products)
Background:	<p>NBEAL1 belongs to the WD repeat neurobeachin family. It contains 1 BEACH domain and 2 WD repeats. NBEAL1 is highly expressed in brain, kidney, prostate and testis and weakly expressed in ovary, small intestine, colon and peripheral blood leukocytes. It may be correlative to several tumors, such as ovary serous adenocarcinoma and metastasis mammary gland carcinoma breast.</p> <p>Alias Symbols: A530083I02Rik, ALS2CR17, ALS2CR16</p> <p>Protein Interaction Partner: UBC,</p> <p>Protein Size: 1335</p>
Molecular Weight:	153 kDa
Gene ID:	65065
NCBI Accession:	NM_198945 , NP_945183

Application Details

Application Notes:	Optimal working dilutions should be determined experimentally by the investigator.
Comment:	Antigen size: 1335 AA
Restrictions:	For Research Use only

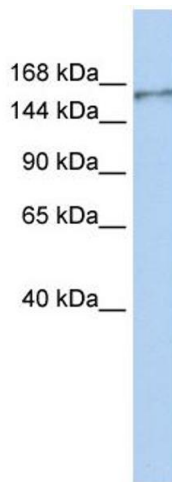
Handling

Format:	Liquid
Concentration:	Lot specific
Buffer:	Liquid. Purified antibody supplied in 1x PBS buffer with 0.09 % (w/v) sodium azide and 2 % sucrose.
Preservative:	Sodium azide
Precaution of Use:	This product contains Sodium azide: a POISONOUS AND HAZARDOUS SUBSTANCE which should be handled by trained staff only.
Handling Advice:	Avoid repeated freeze-thaw cycles.
Storage:	-20 °C
Storage Comment:	For short term use, store at 2-8°C up to 1 week. For long term storage, store at -20°C in small aliquots to prevent freeze-thaw cycles.

Publications

Product cited in: Mehrle, Rosenfelder, Schupp, del Val, Arlt, Hahne, Bechtel, Simpson, Hofmann, Hide, Glatting, Huber, Pepperkok, Poustka, Wiemann: "The LIFEdb database in 2006." in: **Nucleic acids research**, Vol. 34, Issue Database issue, pp. D415-8, (2005) ([PubMed](#)).

Images



Western Blotting

Image 1. WB Suggested Anti-NBEAL1 Antibody Titration: 0.2-1 ug/ml ELISA Titer: 1:12500 Positive Control: MCF7 cell lysate