

Datasheet for ABIN2776688  
**anti-DDX47 antibody (N-Term)**[Go to Product page](#)**1** Image**1** Publication

## Overview

Quantity:	100 µL
Target:	DDX47
Binding Specificity:	N-Term
Reactivity:	Human, Mouse, Rat, Dog, Rabbit, Horse, Guinea Pig, Cow, Saccharomyces cerevisiae
Host:	Rabbit
Clonality:	Polyclonal
Conjugate:	This DDX47 antibody is un-conjugated
Application:	Western Blotting (WB)

## Product Details

Immunogen:	The immunogen is a synthetic peptide directed towards the N terminal region of human DDX47
Sequence:	MAAPEEHDSP TEASQPIVEE EETKTFKDLG VTDVLCACD QLGWTKPTKI
Predicted Reactivity:	Cow: 93%, Dog: 93%, Guinea Pig: 100%, Horse: 100%, Human: 100%, Mouse: 100%, Rabbit: 100%, Rat: 100%, Yeast: 92%
Characteristics:	This is a rabbit polyclonal antibody against DDX47. It was validated on Western Blot using a cell lysate as a positive control.
Purification:	Affinity Purified

## Target Details

Target:	DDX47
---------	-------

## Target Details

Alternative Name: DDX47 ([DDX47 Products](#))

**Background:** DDX47 encodes a member of the DEAD box protein family. DEAD box proteins, characterized by the conserved motif Asp-Glu-Ala-Asp (DEAD), are putative RNA helicases. They are implicated in a number of cellular processes involving alteration of RNA secondary structure, such as translation initiation, nuclear and mitochondrial splicing, and ribosome and spliceosome assembly. Based on their distribution patterns, some members of this family are believed to be involved in embryogenesis, spermatogenesis, and cellular growth and division. The protein encoded by this gene can shuttle between the nucleus and the cytoplasm, and has an RNA-independent ATPase activity. Two alternatively spliced transcript variants encoding distinct isoforms have been found for this gene. This gene encodes a member of the DEAD box protein family. DEAD box proteins, characterized by the conserved motif Asp-Glu-Ala-Asp (DEAD), are putative RNA helicases. They are implicated in a number of cellular processes involving alteration of RNA secondary structure, such as translation initiation, nuclear and mitochondrial splicing, and ribosome and spliceosome assembly. Based on their distribution patterns, some members of this family are believed to be involved in embryogenesis, spermatogenesis, and cellular growth and division. The protein encoded by this gene can shuttle between the nucleus and the cytoplasm, and has an RNA-independent ATPase activity. Two alternatively spliced transcript variants encoding distinct isoforms have been found for this gene.

Alias Symbols: RRP3, E4-DBP, HQ0256, MSTP162

Protein Interaction Partner: UBC, EED, rev, PARK2, SRPK1, MLH1, KRAS, FN1, APP, EXOSC4, CAND1, PRNP, SUMO1, HDGF, SUMO2, HDAC5, SART3, Rrp1b,

Protein Size: 455

Molecular Weight: 50 kDa

Gene ID: 51202

NCBI Accession: [NM\\_016355](#), [NP\\_057439](#)

UniProt: [Q9H0S4](#)

## Application Details

Application Notes: Optimal working dilutions should be determined experimentally by the investigator.

Comment: Antigen size: 455 AA

Restrictions: For Research Use only

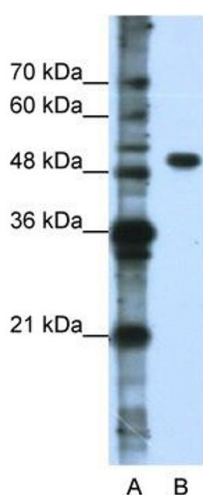
## Handling

Format:	Liquid
Concentration:	Lot specific
Buffer:	Liquid. Purified antibody supplied in 1x PBS buffer with 0.09 % (w/v) sodium azide and 2 % sucrose.
Preservative:	Sodium azide
Precaution of Use:	This product contains Sodium azide: a POISONOUS AND HAZARDOUS SUBSTANCE which should be handled by trained staff only.
Handling Advice:	Avoid repeated freeze-thaw cycles.
Storage:	-20 °C
Storage Comment:	For short term use, store at 2-8°C up to 1 week. For long term storage, store at -20°C in small aliquots to prevent freeze-thaw cycles.

## Publications

Product cited in:	Takeshita, Ichikawa, Nitta, Goyama, Asai, Ogawa, Chiba, Kurokawa: "AML1-Evi-1 specifically transforms hematopoietic stem cells through fusion of the entire Evi-1 sequence to AML1." in: <b>Leukemia</b> , Vol. 22, Issue 6, pp. 1241-9, (2008) ( <a href="#">PubMed</a> ).
-------------------	---

## Images



### Western Blotting

**Image 1.** WB Suggested Anti-DDX47 Antibody Titration: 0.2-1 ug/ml ELISA Titer: 1:312500 Positive Control: Jurkat cell lysate