

Datasheet for ABIN2776691

anti-Splicing Factor 1 antibody (N-Term)

4 Images

[Go to Product page](#)

Overview

Quantity:	100 µL
Target:	Splicing Factor 1 (SF1)
Binding Specificity:	N-Term
Reactivity:	Human, Mouse, Rat, Dog, Rabbit, Cow, Horse, Guinea Pig, Zebrafish (Danio rerio)
Host:	Rabbit
Clonality:	Polyclonal
Conjugate:	This Splicing Factor 1 antibody is un-conjugated
Application:	Western Blotting (WB), Immunohistochemistry (IHC)

Product Details

Immunogen:	The immunogen is a synthetic peptide directed towards the N terminal region of human SF1
Sequence:	NATPLDFPSK KRKRSRWNQD TMEQKTVIPG MPTVIPPGLT REQERAYIVQ
Predicted Reactivity:	Cow: 100%, Dog: 100%, Guinea Pig: 100%, Horse: 100%, Human: 100%, Mouse: 100%, Rabbit: 100%, Rat: 100%, Zebrafish: 86%
Characteristics:	This is a rabbit polyclonal antibody against SF1. It was validated on Western Blot and immunohistochemistry.
Purification:	Protein A purified

Target Details

Target:	Splicing Factor 1 (SF1)
---------	-------------------------

Target Details

Alternative Name:	SF1 (SF1 Products)
Background:	<p>SF1 contains 1 KH domain and 1 CCHC-type zinc finger. It is necessary for the ATP-dependent first step of spliceosome assembly and binds to the intron branch point sequence (BPS) 5'-UACUAAC-3' of the pre-mRNA. It may act as transcription repressor.</p> <p>Alias Symbols: BBP, MBBP, ZFM1, ZNF162, D11S636</p> <p>Protein Interaction Partner: KRTAP26-1, TRIM69, FAM168A, CIAO1, MKRN3, PSMA3, FUS, UBC, NEDD8, SUZ12, EED, RPL24, PLOD2, OSBP, NARS, GFPT1, GART, EIF4B, APBB1, SUPT5H, TROVE2, ITCH, PRPF40A, SAMHD1, XPO7, WBP4, FAF1, TCERG1, HSPH1, FARSB, GAS7, RANBP3, HIRIP3, HIST1H4A, XRCC5, U2AF2,</p> <p>Protein Size: 639</p>
Molecular Weight:	68 kDa
Gene ID:	7536
NCBI Accession:	NM_004630 , NP_004621
UniProt:	Q15637
Pathways:	Nuclear Receptor Transcription Pathway , Steroid Hormone Mediated Signaling Pathway , Ribonucleoprotein Complex Subunit Organization , Maintenance of Protein Location

Application Details

Application Notes:	Optimal working dilutions should be determined experimentally by the investigator.
Comment:	Antigen size: 639 AA
Restrictions:	For Research Use only

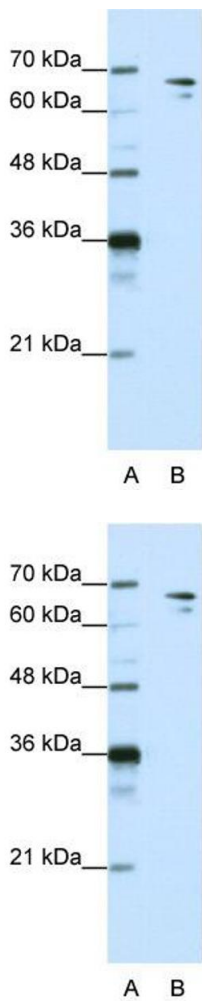
Handling

Format:	Liquid
Concentration:	Lot specific
Buffer:	Liquid. Purified antibody supplied in 1x PBS buffer with 0.09 % (w/v) sodium azide and 2 % sucrose.
Preservative:	Sodium azide
Precaution of Use:	This product contains Sodium azide: a POISONOUS AND HAZARDOUS SUBSTANCE which should be handled by trained staff only.

Handling

Handling Advice:	Avoid repeated freeze-thaw cycles.
Storage:	-20 °C
Storage Comment:	For short term use, store at 2-8°C up to 1 week. For long term storage, store at -20°C in small aliquots to prevent freeze-thaw cycles.

Images

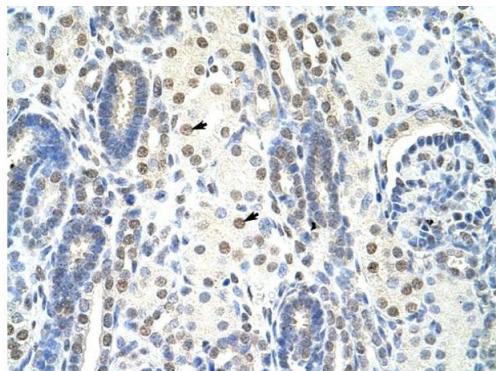


Western Blotting

Image 1. WB Suggested Anti-SF1 Antibody Titration: 1.25ug/ml ELISA Titer: 1:312500 Positive Control: HepG2 cell lysate SF1 is supported by BioGPS gene expression data to be expressed in HepG2

Western Blotting

Image 2. WB Suggested Anti-SF1 Antibody Titration: 1.25 µg/mL ELISA Titer: 1:312500 Positive Control: HepG2 cell lysate SF1 is supported by BioGPS gene expression data to be expressed in HepG2



Rabbit Anti-SF1 Antibody
Catalog Number: ARP41214
Lot Number: QC9948
Paraffin Embedded Tissue: Human Kidney
Cells with Positive label: Epithelial cells of renal tubule (Indicated with Arrows)
Antibody Concentration: 4.0-8.0 µg/ml
Magnification: 400X

Immunohistochemistry

Image 3. Rabbit Anti-SF1 Antibody Paraffin Embedded
Tissue: Human Kidney Cellular Data: Epithelial cells of renal
tubule Antibody Concentration: 4.0-8.0 ug/ml Magnification:
400X

Please check the [product details page](#) for more images. Overall 4 images are available for ABIN2776691.