

Datasheet for ABIN2776693
anti-RPL23A antibody (C-Term)



[Go to Product page](#)

1 Image

Overview

Quantity:	100 µL
Target:	RPL23A
Binding Specificity:	C-Term
Reactivity:	Human, Mouse, Rat, Zebrafish (Danio rerio), Cow, Guinea Pig, Horse, Rabbit, Sheep, Dog, Pig
Host:	Rabbit
Clonality:	Polyclonal
Conjugate:	This RPL23A antibody is un-conjugated
Application:	Western Blotting (WB)

Product Details

Immunogen:	The immunogen is a synthetic peptide directed towards the C-terminal region of Mouse Rpl23a
Sequence:	DVKANKHQIK QAVKKLYDID VAKVNTLIRP DGEKKAYVRL APDYDALDVA
Predicted Reactivity:	Cow: 86%, Dog: 92%, Guinea Pig: 86%, Horse: 86%, Human: 100%, Mouse: 86%, Pig: 100%, Rabbit: 86%, Rat: 86%, Sheep: 86%, Zebrafish: 86%
Characteristics:	This is a rabbit polyclonal antibody against Rpl23a. It was validated on Western Blot.
Purification:	Affinity Purified

Target Details

Target:	RPL23A
Alternative Name:	Rpl23a (RPL23A Products)

Target Details

Background: This protein binds to a specific region on the 26S rRNA.
Alias Symbols: BC029892, MDA20
Protein Interaction Partner: Eed, E130012A19Rik,
Protein Size: 156

Molecular Weight: 18 kDa

Gene ID: 268449

NCBI Accession: [NM_207523](#), [NP_997406](#)

UniProt: [P62751](#)

Application Details

Application Notes: Optimal working dilutions should be determined experimentally by the investigator.

Comment: Antigen size: 156 AA

Restrictions: For Research Use only

Handling

Format: Liquid

Concentration: Lot specific

Buffer: Liquid. Purified antibody supplied in 1x PBS buffer with 0.09 % (w/v) sodium azide and 2 % sucrose.

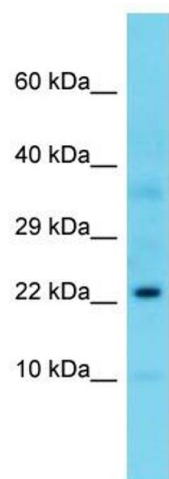
Preservative: Sodium azide

Precaution of Use: This product contains Sodium azide: a POISONOUS AND HAZARDOUS SUBSTANCE which should be handled by trained staff only.

Handling Advice: Avoid repeated freeze-thaw cycles.

Storage: -20 °C

Storage Comment: For short term use, store at 2-8°C up to 1 week. For long term storage, store at -20°C in small aliquots to prevent freeze-thaw cycles.



Western Blotting

Image 1. Host: Rabbit Target Name: Rpl23a Sample Type: Mouse Liver lysates Antibody Dilution: 1.0ug/ml