

Datasheet for ABIN2776698  
**anti-MBNL1 antibody (C-Term)**[Go to Product page](#)

3 Images

1 Publication

## Overview

Quantity:	100 µL
Target:	MBNL1
Binding Specificity:	C-Term
Reactivity:	Human, Rat
Host:	Rabbit
Clonality:	Polyclonal
Conjugate:	This MBNL1 antibody is un-conjugated
Application:	Western Blotting (WB), Immunohistochemistry (IHC)

## Product Details

Immunogen:	The immunogen is a synthetic peptide directed towards the C terminal region of human MBNL1
Sequence:	LCPQQQHLPQ VFPSLQQPQP TSPILDASTL LGATSCPAAA AGKMIPIISA
Predicted Reactivity:	Human: 100%, Rat: 83%
Characteristics:	This is a rabbit polyclonal antibody against MBNL1. It was validated on Western Blot using a cell lysate as a positive control.
Purification:	Protein A purified

## Target Details

Target:	MBNL1
Alternative Name:	MBNL1 ( <a href="#">MBNL1 Products</a> )

## Target Details

Background:	MBNL1 contains 4 C3H1-type zinc fingers and binds to CUG triplet repeat expansion dsRNA. Alias Symbols: EXP, MBNL, EXP35, EXP40, EXP42 Protein Interaction Partner: DAB1, AES, AEN, UBC, ABI3BP, ZNHIT3, VCAM1, ITGA4, IDH3A, FN1, TIAL1, APP, BIN1, ITSN2, DDX17, HNRNPL, HNRNPK, HNRNPH3, HNRNPH2, HNRNPH1, HNRNPF, HNRNPA2B1, DHX9, DDX5, Protein Size: 340
Molecular Weight:	37 kDa
Gene ID:	4154
NCBI Accession:	<a href="#">NM_207296</a> , <a href="#">NP_997179</a>
UniProt:	<a href="#">Q86UV9</a>
Pathways:	<a href="#">Ribonucleoprotein Complex Subunit Organization</a>

## Application Details

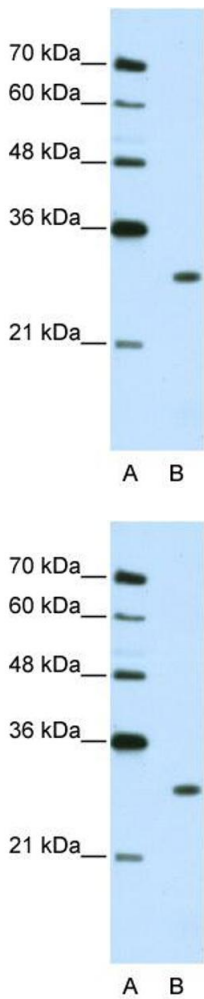
Application Notes:	Optimal working dilutions should be determined experimentally by the investigator.
Comment:	Antigen size: 340 AA
Restrictions:	For Research Use only

## Handling

Format:	Liquid
Concentration:	Lot specific
Buffer:	Liquid. Purified antibody supplied in 1x PBS buffer with 0.09 % (w/v) sodium azide and 2 % sucrose.
Preservative:	Sodium azide
Precaution of Use:	This product contains Sodium azide: a POISONOUS AND HAZARDOUS SUBSTANCE which should be handled by trained staff only.
Handling Advice:	Avoid repeated freeze-thaw cycles.
Storage:	-20 °C
Storage Comment:	For short term use, store at 2-8°C up to 1 week. For long term storage, store at -20°C in small aliquots to prevent freeze-thaw cycles.

Product cited in: Takeshita, Ichikawa, Nitta, Goyama, Asai, Ogawa, Chiba, Kurokawa: "AML1-Evi-1 specifically transforms hematopoietic stem cells through fusion of the entire Evi-1 sequence to AML1." in: **Leukemia**, Vol. 22, Issue 6, pp. 1241-9, (2008) ([PubMed](#)).

Images



Western Blotting

**Image 1.** WB Suggested Anti-MBNL1 Antibody Titration: 2.5ug/ml ELISA Titer: 1:62500 Positive Control: Jurkat cell lysate MBNL1 is strongly supported by BioGPS gene expression data to be expressed in Human Jurkat cells

Western Blotting

**Image 2.** WB Suggested Anti-MBNL1 Antibody Titration: 2.5 µg/mL ELISA Titer: 1:2500 Positive Control: Jurkat cell lysate MBNL1 is strongly supported by BioGPS gene expression data to be expressed in Human Jurkat cells

Immunohistochemistry

**Image 3.** Rabbit Anti-MBNL1 Antibody Formalin Fixed Paraffin Embedded Tissue: Human heart Tissue Observed Staining: Cytoplasmic, nucleus Primary Antibody Concentration: 1:100 Other Working Concentrations: N/A Secondary Antibody: Donkey anti-Rabbit-Cy3 Secondary Antibody Concentration: 1:200 Magnification: 20X Exposure Time: 0.5 - 2.0 sec

