

Datasheet for ABIN2776712
anti-WNT11 antibody (Middle Region)[Go to Product page](#)

2 Images

Overview

Quantity:	100 µL
Target:	WNT11
Binding Specificity:	Middle Region
Reactivity:	Human, Mouse, Rat, Cow, Dog, Horse, Rabbit, Guinea Pig
Host:	Rabbit
Clonality:	Polyclonal
Conjugate:	This WNT11 antibody is un-conjugated
Application:	Western Blotting (WB)

Product Details

Immunogen:	The immunogen is a synthetic peptide directed towards the middle region of Mouse Wnt11
Sequence:	PGCSCGPVPG EPPGPGNRWG GCADNLSYGL LMGAKFSDAP MKVKKTGSQA
Predicted Reactivity:	Cow: 100%, Dog: 100%, Guinea Pig: 100%, Horse: 100%, Human: 100%, Mouse: 100%, Rabbit: 100%, Rat: 100%
Characteristics:	This is a rabbit polyclonal antibody against Wnt11. It was validated on Western Blot.
Purification:	Affinity Purified

Target Details

Target:	WNT11
Alternative Name:	Wnt11 (WNT11 Products)

Target Details

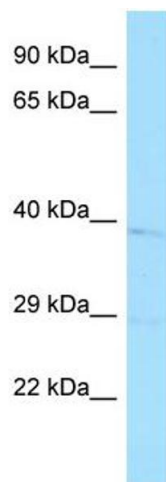
Background:	The function of this protein remains unknown. Alias Symbols: - Protein Interaction Partner: Rspo2, Tcf4, Zbtb33, Tdgf1, Protein Size: 354
Molecular Weight:	39 kDa
Gene ID:	22411
NCBI Accession:	NM_009519 , NP_033545
UniProt:	P48615
Pathways:	WNT Signaling , Cell-Cell Junction Organization

Application Details

Application Notes:	Optimal working dilutions should be determined experimentally by the investigator.
Comment:	Antigen size: 354 AA
Restrictions:	For Research Use only

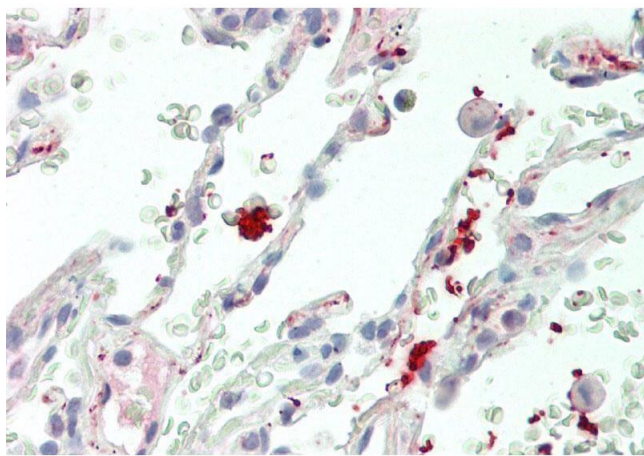
Handling

Format:	Liquid
Concentration:	Lot specific
Buffer:	Liquid. Purified antibody supplied in 1x PBS buffer with 0.09 % (w/v) sodium azide and 2 % sucrose.
Preservative:	Sodium azide
Precaution of Use:	This product contains Sodium azide: a POISONOUS AND HAZARDOUS SUBSTANCE which should be handled by trained staff only.
Handling Advice:	Avoid repeated freeze-thaw cycles.
Storage:	-20 °C
Storage Comment:	For short term use, store at 2-8°C up to 1 week. For long term storage, store at -20°C in small aliquots to prevent freeze-thaw cycles.



Western Blotting

Image 1. Host: Rabbit Target Name: Wnt11 Sample Type: Mouse Stomach lysates Antibody Dilution: 1.0ug/ml



Immunohistochemistry

Image 2. Rabbit Anti-Wnt11 antibody Formalin Fixed Paraffin Embedded Tissue: Human Lung Primary antibody Concentration: 1:100 Secondary Antibody: Donkey anti-Rabbit-Cy3 Secondary Antibody Concentration: 1:200 Magnification: 20x Exposure Time: 0.5-2.0sec