



[Go to Product page](#)

Datasheet for ABIN2776718
anti-GIPC2 antibody (N-Term)

2 Images

Overview

Quantity:	100 µL
Target:	GIPC2
Binding Specificity:	N-Term
Reactivity:	Human, Rat, Mouse
Host:	Rabbit
Clonality:	Polyclonal
Conjugate:	This GIPC2 antibody is un-conjugated
Application:	Western Blotting (WB), Immunohistochemistry (IHC)

Product Details

Immunogen:	The immunogen is a synthetic peptide directed towards the N terminal region of human GIPC2
Sequence:	MPLKLRGKKK AKSKETAGLV EGEPTGAGGG SLSASRAPAR RLVFHAQLAH
Predicted Reactivity:	Human: 100%, Mouse: 86%, Rat: 93%
Characteristics:	This is a rabbit polyclonal antibody against GIPC2. It was validated on Western Blot and immunohistochemistry.
Purification:	Protein A purified

Target Details

Target:	GIPC2
Alternative Name:	GIPC2 (GIPC2 Products)

Target Details

Background: GIPC1/GIPC, GIPC2, and GIPC3 are a family of central PDZ-domain proteins. GIPC2 might play important roles in human gastric cancer through modulation of growth factor signaling or cell adhesion. GIPC1, GIPC2 and GIPC3 might play key roles in carcinogenesis and embryogenesis through modulation of growth factor signaling and cell adhesion.

Alias Symbols: SEMCAP2, SEMCAP-2

Protein Interaction Partner: ZBTB26, GIPC2, SP100, IGSF21, SETDB1, FZD3, UNC119, PTN,

Protein Size: 315

Molecular Weight: 35 kDa

Gene ID: 54810

NCBI Accession: [NM_017655](#), [NP_060125](#)

UniProt: [Q8TF65](#)

Application Details

Application Notes: Optimal working dilutions should be determined experimentally by the investigator.

Comment: Antigen size: 315 AA

Restrictions: For Research Use only

Handling

Format: Liquid

Concentration: Lot specific

Buffer: Liquid. Purified antibody supplied in 1x PBS buffer with 0.09 % (w/v) sodium azide and 2 % sucrose.

Preservative: Sodium azide

Precaution of Use: This product contains Sodium azide: a POISONOUS AND HAZARDOUS SUBSTANCE which should be handled by trained staff only.

Handling Advice: Avoid repeated freeze-thaw cycles.

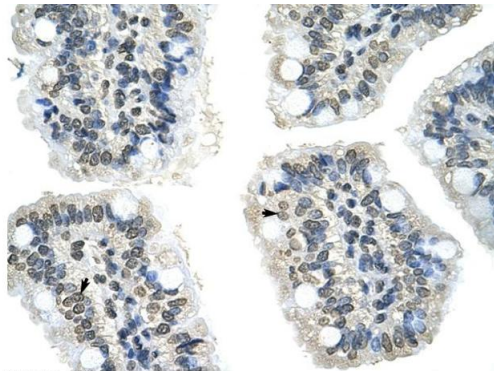
Storage: -20 °C

Storage Comment: For short term use, store at 2-8°C up to 1 week. For long term storage, store at -20°C in small aliquots to prevent freeze-thaw cycles.



Western Blotting

Image 1. WB Suggested Anti-GIPC2 Antibody Titration:
1.25ug/ml Positive Control: Jurkat cell lysate



Immunohistochemistry

Image 2. Rabbit Anti-GIPC2 Antibody Paraffin Embedded
Tissue: Human Intestine Cellular Data: Epithelial cells of
intestinal villas Antibody Concentration: 4.0-8.0 ug/ml
Magnification: 400X

Rabbit Anti-GIPC2 Antibody
Catalog Number: ARP41271
Lot Number: QC11105
Paraffin Embedded Tissue: Human Intestine
Cells with Positive label: Epithelial cells of intestinal villus (Indicated with Arrows)
Antibody Concentration: 4.0-8.0 µg/ml
Magnification: 400X