

Datasheet for ABIN2776728
anti-FZD8 antibody (N-Term)[Go to Product page](#)

2 Images

2 Publications

Overview

Quantity:	100 µL
Target:	FZD8
Binding Specificity:	N-Term
Reactivity:	Human, Mouse, Rat, Dog
Host:	Rabbit
Clonality:	Polyclonal
Conjugate:	This FZD8 antibody is un-conjugated
Application:	Western Blotting (WB)

Product Details

Immunogen:	The immunogen is a synthetic peptide directed towards the N terminal region of human FZD8
Sequence:	PDTLCMDYNR TDLTTAAPSP PRRLPPPPPG EQPPSGSGHG RPPGARPPHR
Predicted Reactivity:	Dog: 100%, Human: 100%, Mouse: 93%, Rat: 92%
Characteristics:	This is a rabbit polyclonal antibody against FZD8. It was validated on Western Blot using a cell lysate as a positive control.
Purification:	Affinity Purified

Target Details

Target:	FZD8
Alternative Name:	FZD8 (FZD8 Products)

Target Details

Background:	<p>FZD8 is a member of the frizzled family. Members of this family are seven-transmembrane domain proteins that are receptors for the Wingless type MMTV integration site family of signaling proteins. Most frizzled receptors are coupled to the beta-catenin canonical signaling pathway. This protein is highly expressed in two human cancer cell lines, indicating that it may play a role in several types of cancer. The crystal structure of the extracellular cysteine-rich domain of a similar mouse protein has been determined. This intronless gene is a member of the frizzled gene family. Members of this family encode seven-transmembrane domain proteins that are receptors for the Wingless type MMTV integration site family of signaling proteins. Most frizzled receptors are coupled to the beta-catenin canonical signaling pathway. This gene is highly expressed in two human cancer cell lines, indicating that it may play a role in several types of cancer. The crystal structure of the extracellular cysteine-rich domain of a similar mouse protein has been determined.</p> <p>Alias Symbols: FZ-8, hFZ8</p> <p>Protein Interaction Partner: WNT1, LRP5, LRP6, SUMO1, GOPC, RYK,</p> <p>Protein Size: 694</p>
-------------	---

Molecular Weight:	73 kDa
-------------------	--------

Gene ID:	8325
----------	------

NCBI Accession:	NM_031866 , NP_114072
-----------------	---

UniProt:	Q9H461
----------	------------------------

Pathways:	WNT Signaling
-----------	-------------------------------

Application Details

Application Notes:	Optimal working dilutions should be determined experimentally by the investigator.
--------------------	--

Comment:	Antigen size: 694 AA
----------	----------------------

Restrictions:	For Research Use only
---------------	-----------------------

Handling

Format:	Liquid
---------	--------

Concentration:	Lot specific
----------------	--------------

Buffer:	Liquid. Purified antibody supplied in 1x PBS buffer with 0.09 % (w/v) sodium azide and 2 % sucrose.
---------	---

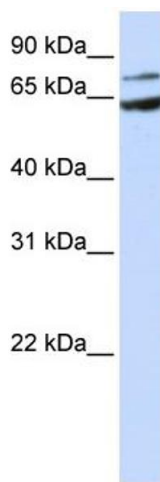
Handling

Preservative:	Sodium azide
Precaution of Use:	This product contains Sodium azide: a POISONOUS AND HAZARDOUS SUBSTANCE which should be handled by trained staff only.
Handling Advice:	Avoid repeated freeze-thaw cycles.
Storage:	-20 °C
Storage Comment:	For short term use, store at 2-8°C up to 1 week. For long term storage, store at -20°C in small aliquots to prevent freeze-thaw cycles.

Publications

Product cited in:	<p>Xu, Wen, Liu, Xu, Yang, Liu, Feng, An: "MicroRNA-375 suppresses human colorectal cancer metastasis by targeting Frizzled 8." in: Oncotarget, Vol. 7, Issue 26, pp. 40644-40656, (2016) (PubMed).</p> <p>Yin, Xu, Bonfil, Banerjee, Sarkar, Sethi, Reddy: "Tumor-initiating cells and FZD8 play a major role in drug resistance in triple-negative breast cancer." in: Molecular cancer therapeutics, Vol. 12, Issue 4, pp. 491-8, (2013) (PubMed).</p>
-------------------	---

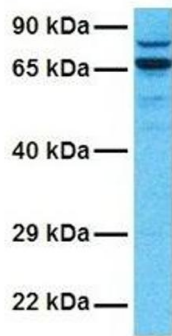
Images



Western Blotting

Image 1. WB Suggested Anti-FZD8 Antibody Titration: 0.2-1 ug/ml ELISA Titer: 1:62500 Positive Control: MCF7 cell lysate

FZD8



Western Blotting

Image 2. Host: Rabbit Target Name: FZD8 Sample Tissue:
Human 721_B Antibody Dilution: 1.0ug/ml