



[Go to Product page](#)

Datasheet for ABIN2776733

## anti-GIPC3 antibody (Middle Region)

### 1 Image

#### Overview

Quantity:	100 µL
Target:	GIPC3
Binding Specificity:	Middle Region
Reactivity:	Human, Guinea Pig, Dog, Rat
Host:	Rabbit
Clonality:	Polyclonal
Conjugate:	This GIPC3 antibody is un-conjugated
Application:	Western Blotting (WB)

#### Product Details

Immunogen:	The immunogen is a synthetic peptide directed towards the middle region of human GIPC3
Sequence:	TLRLRSGGAA TVEEAPSEFE EEASRKVDDL LESYMGIRDP ELASTMVETS
Predicted Reactivity:	Dog: 92%, Guinea Pig: 85%, Human: 100%, Rat: 90%
Characteristics:	This is a rabbit polyclonal antibody against GIPC3. It was validated on Western Blot.
Purification:	Affinity Purified

#### Target Details

Target:	GIPC3
Alternative Name:	GIPC3 ( <a href="#">GIPC3 Products</a> )
Background:	The function of GIPC3 remains unknown.

## Target Details

---

Alias Symbols: C19orf64, DKFZp686J1198, FLJ40925, DFNB15, DFNB72, DFNB95

Protein Interaction Partner: UBC, FZD3,

Protein Size: 312

---

Molecular Weight: 34 kDa

---

Gene ID: 126326

---

NCBI Accession: [NM\\_133261](#), [NP\\_573568](#)

---

UniProt: [Q8TF64](#)

---

## Application Details

---

Application Notes: Optimal working dilutions should be determined experimentally by the investigator.

---

Comment: Antigen size: 312 AA

---

Restrictions: For Research Use only

---

## Handling

---

Format: Liquid

---

Concentration: Lot specific

---

Buffer: Liquid. Purified antibody supplied in 1x PBS buffer with 0.09 % (w/v) sodium azide and 2 % sucrose.

---

Preservative: Sodium azide

---

Precaution of Use: This product contains Sodium azide: a POISONOUS AND HAZARDOUS SUBSTANCE which should be handled by trained staff only.

---

Handling Advice: Avoid repeated freeze-thaw cycles.

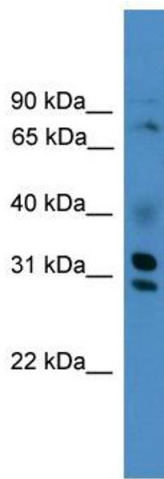
---

Storage: -20 °C

---

Storage Comment: For short term use, store at 2-8°C up to 1 week. For long term storage, store at -20°C in small aliquots to prevent freeze-thaw cycles.

---



### Western Blotting

**Image 1.** WB Suggested Anti-GIPC3 Antibody Titration: 0.2-1 ug/ml ELISA Titer: 1:62500 Positive Control: THP-1 cell lysate