

Datasheet for ABIN2776738
anti-WDR5 antibody (C-Term)

3 Images

[Go to Product page](#)

Overview

Quantity:	100 µL
Target:	WDR5
Binding Specificity:	C-Term
Reactivity:	Human, Mouse, Rat, Horse, Cow, Dog, Guinea Pig, Zebrafish (Danio rerio), Saccharomyces cerevisiae
Host:	Rabbit
Clonality:	Polyclonal
Conjugate:	This WDR5 antibody is un-conjugated
Application:	Western Blotting (WB), Immunohistochemistry (IHC), Immunoprecipitation (IP)

Product Details

Immunogen:	The immunogen is a synthetic peptide directed towards the C terminal region of human WDR5
Sequence:	LAGHTKAVSS VKFSPNGEWL ASSSADKLIK IWGAYDGKFE KTISGHKLG I
Predicted Reactivity:	Cow: 100%, Dog: 100%, Guinea Pig: 100%, Horse: 100%, Human: 100%, Mouse: 100%, Rat: 100%, Yeast: 91%, Zebrafish: 93%
Characteristics:	This is a rabbit polyclonal antibody against WDR5. It was validated on Western Blot.
Purification:	Affinity Purified

Target Details

Target:	WDR5
---------	------

Target Details

Alternative Name:	WDR5 (WDR5 Products)
Background:	<p>This gene encodes a member of the WD repeat protein family. WD repeats are minimally conserved regions of approximately 40 amino acids typically bracketed by gly-his and trp-asp (GH-WD), which may facilitate formation of heterotrimeric or multiprotein complexes. Members of this family are involved in a variety of cellular processes, including cell cycle progression, signal transduction, apoptosis, and gene regulation. This protein contains 7 WD repeats. Alternatively spliced transcript variants encoding the same protein have been identified.</p> <p>Alias Symbols: BIG-3, SWD3</p> <p>Protein Interaction Partner: RUSC1-AS1, SSX2IP, ZXDC, MBIP, CXXC1, SETD1A, HSF2, PRMT5, NFE4, KMT2D, ING2, HDAC1, SENP3, UBC, BMI1, SRPK2, CSNK2A2, CSNK1E, KDM6B, KDM6A, NEDD8, KMT2A, BARD1, UNC45A, VPS35, CSE1L, ATP6V1B2, APP, ASH2L, USP1, TTK, PPP1CB, HCFC1, TADA3, KAT2B, TADA2A, M</p> <p>Protein Size: 334</p>
Molecular Weight:	36 kDa
Gene ID:	11091
NCBI Accession:	NM_017588 , NP_060058
UniProt:	Q5M786

Application Details

Application Notes:	Optimal working dilutions should be determined experimentally by the investigator.
Comment:	Antigen size: 334 AA
Restrictions:	For Research Use only

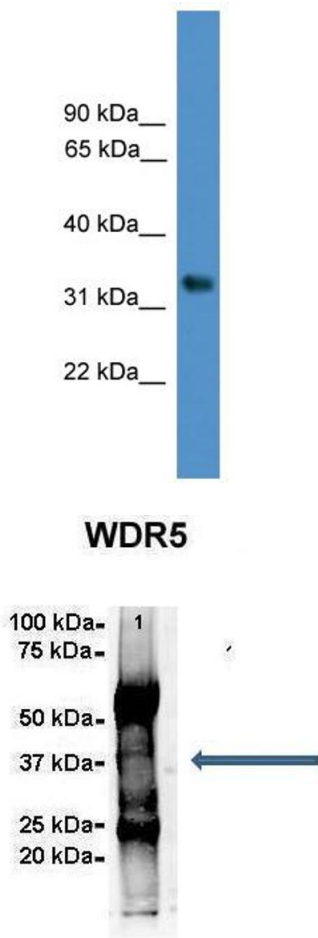
Handling

Format:	Liquid
Concentration:	Lot specific
Buffer:	Liquid. Purified antibody supplied in 1x PBS buffer with 0.09 % (w/v) sodium azide and 2 % sucrose.
Preservative:	Sodium azide
Precaution of Use:	This product contains Sodium azide: a POISONOUS AND HAZARDOUS SUBSTANCE which should be handled by trained staff only.

Handling

Handling Advice:	Avoid repeated freeze-thaw cycles.
Storage:	-20 °C
Storage Comment:	For short term use, store at 2-8°C up to 1 week. For long term storage, store at -20°C in small aliquots to prevent freeze-thaw cycles.

Images



Western Blotting

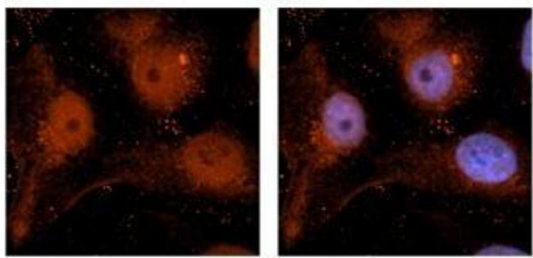
Image 1. WB Suggested Anti-WDR5 Antibody Titration: 0.2-1 ug/ml ELISA Titer: 1:62500 Positive Control: 721_B cell lysate

Immunoprecipitation

Image 2. Amount and Sample Type : 500 ug Human NT2 cell lysate Amount of IP Antibody : 6 ug Primary Antibody : WDR5 Primary Antibody Dilution : 1:500 Secondary Antibody : Goat anti-rabbit Alexa-Fluor 594 Secondary Antibody Dilution : 1:5000 Gene Name : WDR5 Submitted by : Dr. Yuzhi Chen, University of Arkansas for Medical Science

See Other Application 1 Data and Customer Feedback for more information

WDR5



Red: Antibody
Blue: DAPI

Immunohistochemistry

Image 3. Sample Type : Human brain stem cells (NT2)
Primary Antibody Dilution : 1:500 Secondary Antibody : Goat anti-rabbit Alexa Fluor 594 Secondary Antibody Dilution : 1:1000 Color/Signal Descriptions : Red: WDR5 Blue: DAPI
Gene Name : WDR5 Submitted by : Dr. Yuzhi Chen, University of Arkansas for Medical Science

See IHC 1 Data and Customer Feedback for more Information