

Datasheet for ABIN2776740
anti-WDR8 antibody (N-Term)[Go to Product page](#)

1 Image

Overview

Quantity:	100 µL
Target:	WDR8
Binding Specificity:	N-Term
Reactivity:	Human, Cow, Horse, Mouse, Rat, Dog, Guinea Pig
Host:	Rabbit
Clonality:	Polyclonal
Conjugate:	This WDR8 antibody is un-conjugated
Application:	Western Blotting (WB)

Product Details

Sequence:	RYLALAERRD CRDYVSIFVC SDWQLLRHFD TDTQDLTGIE WAPNGCVLAA
Predicted Reactivity:	Cow: 93%, Dog: 86%, Guinea Pig: 86%, Horse: 93%, Human: 100%, Mouse: 100%, Rat: 100%
Characteristics:	This is a rabbit polyclonal antibody against Wdr8. It was validated on Western Blot.
Purification:	Affinity Purified

Target Details

Target:	WDR8
Alternative Name:	Wdr8 (WDR8 Products)
Background:	The function of this protein remains unknown. Alias Symbols: 2610044M17Rik, 5330425N03Rik, Dd57, Wrap73, Wdr8

Target Details

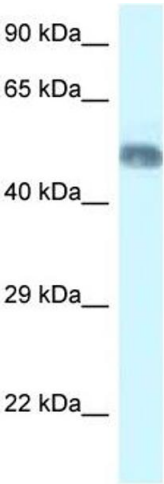
	Protein Size: 462
Molecular Weight:	52 kDa
Gene ID:	59002
NCBI Accession:	NM_021499 , NP_067474
UniProt:	Q9JM98

Application Details

Application Notes:	Optimal working dilutions should be determined experimentally by the investigator.
Comment:	Antigen size: 462 AA
Restrictions:	For Research Use only

Handling

Format:	Liquid
Concentration:	Lot specific
Buffer:	Liquid. Purified antibody supplied in 1x PBS buffer with 0.09 % (w/v) sodium azide and 2 % sucrose.
Preservative:	Sodium azide
Precaution of Use:	This product contains Sodium azide: a POISONOUS AND HAZARDOUS SUBSTANCE which should be handled by trained staff only.
Handling Advice:	Avoid repeated freeze-thaw cycles.
Storage:	-20 °C
Storage Comment:	For short term use, store at 2-8°C up to 1 week. For long term storage, store at -20°C in small aliquots to prevent freeze-thaw cycles.



Western Blotting

Image 1. WB Suggested Anti-Wdr8 Antibody Titration: 1.0 ug/ml Positive Control: Mouse Brain