

Datasheet for ABIN2776743
anti-WDR6 antibody (C-Term)

3 Images

[Go to Product page](#)

Overview

Quantity:	100 µL
Target:	WDR6
Binding Specificity:	C-Term
Reactivity:	Human, Mouse, Rat, Guinea Pig, Rabbit, Cow, Dog, Horse
Host:	Rabbit
Clonality:	Polyclonal
Conjugate:	This WDR6 antibody is un-conjugated
Application:	Western Blotting (WB), Immunohistochemistry (IHC)

Product Details

Immunogen:	The immunogen is a synthetic peptide directed towards the C terminal region of human WDR6
Sequence:	TPSLTLQAHS CGINSLHTLP TREGHHLVAS GSEDGSLHVF VLAVEMQLQE
Predicted Reactivity:	Cow: 93%, Dog: 93%, Guinea Pig: 100%, Horse: 93%, Human: 100%, Mouse: 100%, Rabbit: 93%, Rat: 100%
Characteristics:	This is a rabbit polyclonal antibody against WDR6. It was validated on Western Blot and immunohistochemistry.
Purification:	Affinity Purified

Target Details

Target:	WDR6
---------	------

Target Details

Alternative Name:	WDR6 (WDR6 Products)
Background:	<p>WDR6 is a member of the WD repeat protein family. WD repeats are minimally conserved regions of approximately 40 amino acids typically bracketed by gly-his and trp-aspartic acid (GH-WD), which may facilitate formation of heterotrimeric or multiprotein complexes. Members of this family are involved in a variety of cellular processes, including cell cycle progression, signal transduction, apoptosis, and gene regulation.</p> <p>Protein Interaction Partner: UBC, PTPN3, EMD, IRS4, HIPK4, DYRK1B, ILK, NEDD8, GRB2, TIA1, MAP2K7, NOTCH1, BRCA1, PIP5K2, CUL3, SIRT7, G2E3, CDC42EP4,</p> <p>Protein Size: 484</p>
Molecular Weight:	53 kDa
Gene ID:	11180
NCBI Accession:	NM_018031
UniProt:	Q6AZD6

Application Details

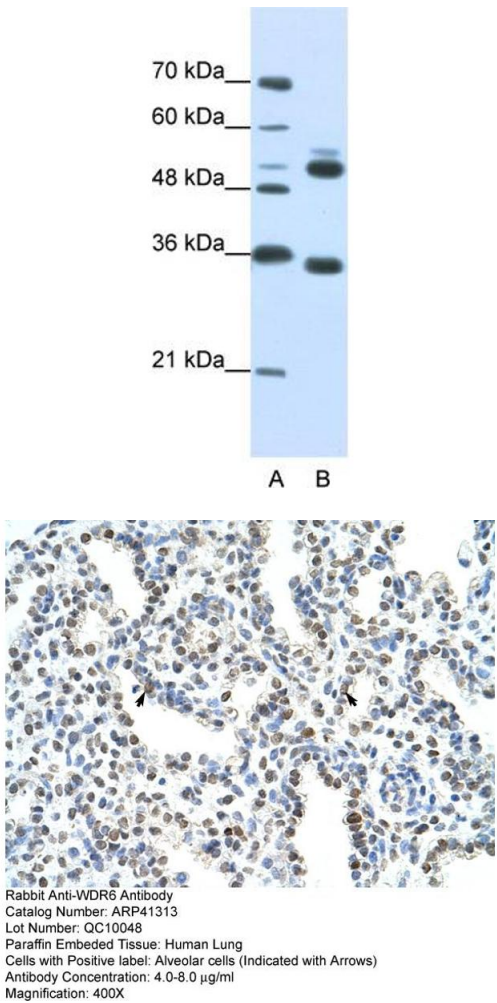
Application Notes:	Optimal working dilutions should be determined experimentally by the investigator.
Comment:	Antigen size: 484 AA
Restrictions:	For Research Use only

Handling

Format:	Liquid
Concentration:	Lot specific
Buffer:	Liquid. Purified antibody supplied in 1x PBS buffer with 0.09 % (w/v) sodium azide and 2 % sucrose.
Preservative:	Sodium azide
Precaution of Use:	This product contains Sodium azide: a POISONOUS AND HAZARDOUS SUBSTANCE which should be handled by trained staff only.
Handling Advice:	Avoid repeated freeze-thaw cycles.
Storage:	-20 °C
Storage Comment:	For short term use, store at 2-8°C up to 1 week. For long term storage, store at -20°C in small

aliquots to prevent freeze-thaw cycles.

Images

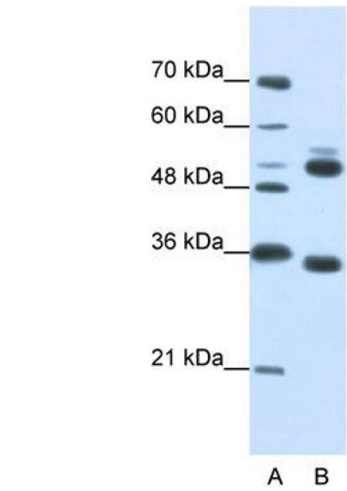


Western Blotting

Image 1. WB Suggested Anti-WDR6 Antibody Titration: 0.2-1 ug/ml Positive Control: Jurkat cell lysate WDR6 is supported by BioGPS gene expression data to be expressed in Jurkat

Immunohistochemistry

Image 2. Rabbit Anti-WDR6 Antibody Paraffin Embedded Tissue: Human Lung Cellular Data: Alveolar cells Antibody Concentration: 4.0-8.0 ug/ml Magnification: 400X



Western Blotting

Image 3. WB Suggested Anti-WDR6 Antibody Titration: 0.2-1 µg/mL Positive Control: Jurkat cell lysate WDR6 is supported by BioGPS gene expression data to be expressed in Jurkat