

Datasheet for ABIN2776744
anti-WDR12 antibody (Middle Region)[Go to Product page](#)

2 Images

Overview

Quantity:	100 µL
Target:	WDR12
Binding Specificity:	Middle Region
Reactivity:	Human, Mouse, Rat, Cow, Guinea Pig, Horse, Rabbit, Dog, Zebrafish (Danio rerio), Saccharomyces cerevisiae
Host:	Rabbit
Clonality:	Polyclonal
Conjugate:	This WDR12 antibody is un-conjugated
Application:	Western Blotting (WB)

Product Details

Sequence:	SGAKFCSGSW DKMLKIWSTV PTDEEDEMEE ATNRPRKKQK TEQLGLTRTP
Predicted Reactivity:	Cow: 100%, Dog: 93%, Guinea Pig: 100%, Horse: 100%, Human: 100%, Mouse: 93%, Rabbit: 100%, Rat: 100%, Yeast: 77%, Zebrafish: 86%
Characteristics:	This is a rabbit polyclonal antibody against Wdr12. It was validated on Western Blot.
Purification:	Affinity Purified

Target Details

Target:	WDR12
Alternative Name:	Wdr12 (WDR12 Products)

Target Details

Background:	Wdr12 is a component of the PeBoW complex, which is required for maturation of 28S and 5.8S ribosomal RNAs and formation of the 60S ribosome. Alias Symbols: 4933402C23Rik, Ytm1, Ytm1p Protein Interaction Partner: Eed, Notch1, Protein Size: 423
Molecular Weight:	47 kDa
Gene ID:	57750
NCBI Accession:	NM_021312 , NP_067287
UniProt:	Q9JJA4

Application Details

Application Notes:	Optimal working dilutions should be determined experimentally by the investigator.
Comment:	Antigen size: 423 AA
Restrictions:	For Research Use only

Handling

Format:	Liquid
Concentration:	Lot specific
Buffer:	Liquid. Purified antibody supplied in 1x PBS buffer with 0.09 % (w/v) sodium azide and 2 % sucrose.
Preservative:	Sodium azide
Precaution of Use:	This product contains Sodium azide: a POISONOUS AND HAZARDOUS SUBSTANCE which should be handled by trained staff only.
Handling Advice:	Avoid repeated freeze-thaw cycles.
Storage:	-20 °C
Storage Comment:	For short term use, store at 2-8°C up to 1 week. For long term storage, store at -20°C in small aliquots to prevent freeze-thaw cycles.

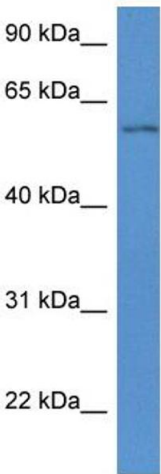


Rabbit Anti-Wdr12 Antibody
Catalog Number: ARP41316
Lot Number: QC10051
Lane: Mouse Spleen Lysate

Antibody Titration: 1.0µg/ml
Gel Concentration: 12%

Western Blotting

Image 1.



Western Blotting

Image 2. WB Suggested Anti-Wdr12 Antibody Titration: 1.0 ug/ml Positive Control: Mouse Spleen