

Datasheet for ABIN2776745
anti-WDR12 antibody (C-Term)[Go to Product page](#)

3 Images

Overview

Quantity:	100 µL
Target:	WDR12
Binding Specificity:	C-Term
Reactivity:	Human, Mouse, Rat, Cow, Guinea Pig, Horse, Rabbit, Dog, Zebrafish (Danio rerio)
Host:	Rabbit
Clonality:	Polyclonal
Conjugate:	This WDR12 antibody is un-conjugated
Application:	Western Blotting (WB), Immunohistochemistry (IHC)

Product Details

Immunogen:	The immunogen is a synthetic peptide directed towards the C terminal region of human WDR12
Sequence:	DTRSCAPLY DLAAHEDKVL SVDWTDGILL LSGGADNKLY SYRYSPTTSH
Predicted Reactivity:	Cow: 100%, Dog: 100%, Guinea Pig: 100%, Horse: 100%, Human: 100%, Mouse: 93%, Rabbit: 100%, Rat: 100%, Zebrafish: 89%
Characteristics:	This is a rabbit polyclonal antibody against WDR12. It was validated on Western Blot using a cell lysate as a positive control.
Purification:	Protein A purified

Target Details

Target:	WDR12
---------	-------

Target Details

Alternative Name:	WDR12 (WDR12 Products)
Background:	<p>WDR12 is a member of the WD repeat protein family. WD repeats are minimally conserved regions of approximately 40 amino acids typically bracketed by gly-his and trp-aspartate (GH-WD), which may facilitate formation of heterotrimeric or multiprotein complexes. Members of this family are involved in a variety of cellular processes, including cell cycle progression, signal transduction, apoptosis, and gene regulation. The function of this protein is not known. This gene encodes a member of the WD repeat protein family. WD repeats are minimally conserved regions of approximately 40 amino acids typically bracketed by gly-his and trp-aspartate (GH-WD), which may facilitate formation of heterotrimeric or multiprotein complexes. Members of this family are involved in a variety of cellular processes, including cell cycle progression, signal transduction, apoptosis, and gene regulation. This protein is highly similar to the mouse WD repeat domain 12 protein at the amino acid level. The function of this protein is not known.</p> <p>Alias Symbols: YTM1</p> <p>Protein Interaction Partner: UBC, RNF2, BMI1, WDR92, VPS25, ACBD3, VPS29, VPS36, RPU22, SNF8, TOM1, TSN, TBCD, SRSF5, PPP3CB, PPP2CB, WDR12, PES1, BOP1, VPS37B, UBE2Z, TBC1D13, SEPHS1, TOMM34, SUGT1, VAT1, USP14, XPO1, TSG101, INPP1, DDX6, GRK5, SIRT7, SUMO2, HIST1H1C, WDR5, NOTCH1,</p> <p>Protein Size: 423</p>
Molecular Weight:	47 kDa
Gene ID:	55759
NCBI Accession:	NM_018256 , NP_060726
UniProt:	Q9GZL7

Application Details

Application Notes:	Optimal working dilutions should be determined experimentally by the investigator.
Comment:	Antigen size: 423 AA
Restrictions:	For Research Use only

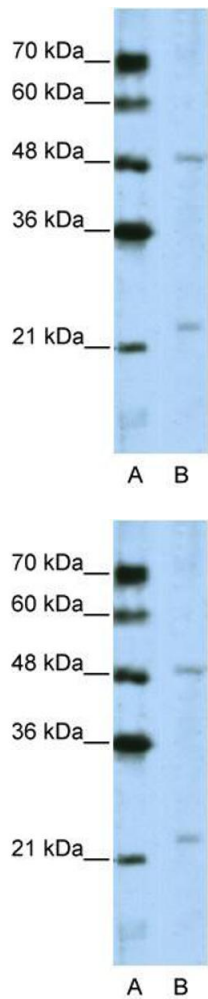
Handling

Format:	Liquid
Concentration:	Lot specific
Buffer:	Liquid. Purified antibody supplied in 1x PBS buffer with 0.09 % (w/v) sodium azide and 2 %

Handling

	sucrose.
Preservative:	Sodium azide
Precaution of Use:	This product contains Sodium azide: a POISONOUS AND HAZARDOUS SUBSTANCE which should be handled by trained staff only.
Handling Advice:	Avoid repeated freeze-thaw cycles.
Storage:	-20 °C
Storage Comment:	For short term use, store at 2-8°C up to 1 week. For long term storage, store at -20°C in small aliquots to prevent freeze-thaw cycles.

Validation report #101227 for Western Blotting (WB)

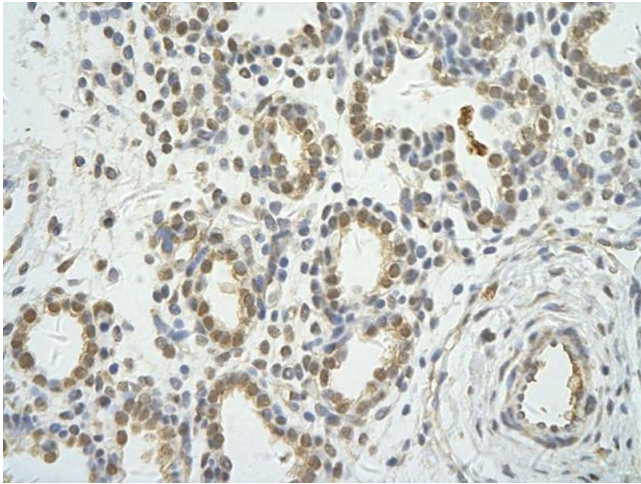


Western Blotting

Image 1. WB Suggested Anti-WDR12 Antibody Titration: 5.0ug/ml Positive Control: Jurkat cell lysate WDR12 is supported by BioGPS gene expression data to be expressed in Jurkat

Western Blotting

Image 2. WB Suggested Anti-WDR12 Antibody Titration: 5.0 µg/mL Positive Control: Jurkat cell lysate WDR12 is supported by BioGPS gene expression data to be expressed in Jurkat



Immunohistochemistry

Image 3. Rabbit Anti-WDR12 antibody Paraffin Embedded
Tissue: Human Lung cell Cellular Data: alveolar cell Antibody
Concentration: 4.0-8.0 ug/ml Magnification: 400X