

Datasheet for ABIN2776747
anti-WDR4 antibody (C-Term)[Go to Product page](#)

2 Images

Overview

Quantity:	100 µL
Target:	WDR4
Binding Specificity:	C-Term
Reactivity:	Human, Mouse, Rat, Horse, Cow, Rabbit, Pig, Saccharomyces cerevisiae
Host:	Rabbit
Clonality:	Polyclonal
Conjugate:	This WDR4 antibody is un-conjugated
Application:	Western Blotting (WB), Immunohistochemistry (IHC)

Product Details

Immunogen:	The immunogen is a synthetic peptide directed towards the C terminal region of human WDR4
Sequence:	AGADASFSSL YKATFDNVTS YLKKKEERLQ QQLEKKQRRR SPPPGPDGHA
Predicted Reactivity:	Cow: 93%, Horse: 93%, Human: 100%, Mouse: 87%, Pig: 90%, Rabbit: 83%, Rat: 75%, Yeast: 75%
Characteristics:	This is a rabbit polyclonal antibody against WDR4. It was validated on Western Blot and immunohistochemistry.
Purification:	Protein A purified

Target Details

Target:	WDR4
Alternative Name:	WDR4 (WDR4 Products)

Target Details

Background: WDR4 is a member of the WD repeat protein family. WD repeats are minimally conserved regions of approximately 40 amino acids typically bracketed by gly-his and trp-aspartic acid (GH-WD), which may facilitate formation of heterotrimeric or multiprotein complexes. Members of this family are involved in a variety of cellular processes, including cell cycle progression, signal transduction, apoptosis, and gene regulation. This gene is excluded as a candidate for a form of nonsyndromic deafness (DFNB10), but is still a candidate for other disorders mapped to 21q22.3 as well as for the development of Down syndrome phenotypes. This gene encodes a member of the WD repeat protein family. WD repeats are minimally conserved regions of approximately 40 amino acids typically bracketed by gly-his and trp-aspartic acid (GH-WD), which may facilitate formation of heterotrimeric or multiprotein complexes. Members of this family are involved in a variety of cellular processes, including cell cycle progression, signal transduction, apoptosis, and gene regulation. This gene is excluded as a candidate for a form of nonsyndromic deafness (DFNB10), but is still a candidate for other disorders mapped to 21q22.3 as well as for the development of Down syndrome phenotypes. Two transcript variants encoding the same protein have been found for this gene.

Alias Symbols: TRM82

Protein Interaction Partner: FAM118A, RABGGTB, METTL1, LGR4, CUL5, PDE12, WDR92, DCTPP1, P3H1, ELAC2, XPO5, NPLOC4, UBE2R2, DPP8, PPME1, ERO1L, UBQLN2, DBNL, KIAA1279, ARIH1, HSPBP1, PLIN3, ACTR2, SAE1, ASMTL, OGT, SURF2, SRP14, DNAJB1, DDX5, ALAD, ADSL, ERC1, UBP1, UBE2D1, TERF2, TE

Protein Size: 412

Molecular Weight: 45 kDa

Gene ID: 10785

NCBI Accession: [NM_033661](#), [NP_387510](#)

UniProt: [P57081](#)

Application Details

Application Notes: Optimal working dilutions should be determined experimentally by the investigator.

Comment: Antigen size: 412 AA

Restrictions: For Research Use only

Handling

Format: Liquid

Handling

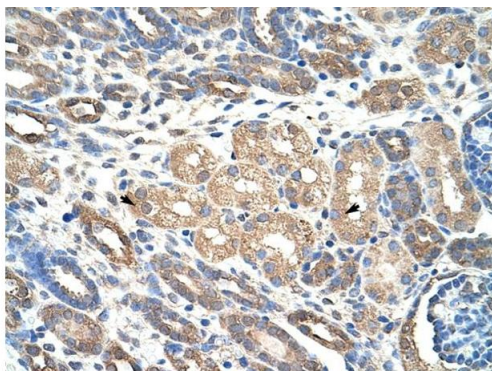
Concentration:	Lot specific
Buffer:	Liquid. Purified antibody supplied in 1x PBS buffer with 0.09 % (w/v) sodium azide and 2 % sucrose.
Preservative:	Sodium azide
Precaution of Use:	This product contains Sodium azide: a POISONOUS AND HAZARDOUS SUBSTANCE which should be handled by trained staff only.
Handling Advice:	Avoid repeated freeze-thaw cycles.
Storage:	-20 °C
Storage Comment:	For short term use, store at 2-8°C up to 1 week. For long term storage, store at -20°C in small aliquots to prevent freeze-thaw cycles.

Images



Western Blotting

Image 1. WB Suggested Anti-WDR4 Antibody Titration:
1.25ug/ml Positive Control: HepG2 cell lysate



Rabbit Anti-WDR4 Antibody
Catalog Number: ARP41321
Lot Number: QC10056
Paraffin Embedded Tissue: Human Kidney
Cells with Positive label: Epithelial cells of renal tubule (Indicated with Arrows)
Antibody Concentration: 4.0-8.0 µg/ml
Magnification: 400X

Immunohistochemistry

Image 2. Rabbit Anti-WDR4 Antibody Paraffin Embedded
Tissue: Human Kidney Cellular Data: Epithelial cells of renal
tubule Antibody Concentration: 4.0-8.0 ug/ml Magnification:
400X