



[Go to Product page](#)

Datasheet for ABIN2776748

anti-GNB1L antibody (C-Term)

4 Images

1 Publication

Overview

Quantity:	100 µL
Target:	GNB1L
Binding Specificity:	C-Term
Reactivity:	Human, Mouse, Rat, Rabbit, Zebrafish (Danio rerio), Dog, Guinea Pig, Horse
Host:	Rabbit
Clonality:	Polyclonal
Conjugate:	This GNB1L antibody is un-conjugated
Application:	Western Blotting (WB), Immunohistochemistry (IHC)

Product Details

Immunogen:	The immunogen is a synthetic peptide directed towards the C terminal region of human GNB1L
Sequence:	RVFHWRTMQP LAVLAFHSAA VQCVAFTADG LLAAGSKDQR ISLWSLYPRA
Predicted Reactivity:	Dog: 92%, Guinea Pig: 92%, Horse: 92%, Human: 100%, Mouse: 100%, Rabbit: 92%, Rat: 100%, Zebrafish: 100%
Characteristics:	This is a rabbit polyclonal antibody against GNB1L. It was validated on Western Blot and immunohistochemistry.
Purification:	Protein A purified

Target Details

Target:	GNB1L
---------	-------

Target Details

Alternative Name: [GNB1L \(GNB1L Products\)](#)

Background: GNB1L is a G-protein beta-subunit-like polypeptide which is a member of the WD repeat protein family. WD repeats are minimally conserved regions of approximately 40 amino acids typically bracketed by gly-his and trp-asp (GH-WD), which may facilitate formation of heterotrimeric or multiprotein complexes. Members of this family are involved in a variety of cellular processes, including cell cycle progression, signal transduction, apoptosis, and gene regulation. This protein contains 6 WD repeats and is highly expressed in the heart. Therefore, this gene may contribute to the etiology of those disorders. This gene encodes a G-protein beta-subunit-like polypeptide which is a member of the WD repeat protein family. WD repeats are minimally conserved regions of approximately 40 amino acids typically bracketed by gly-his and trp-asp (GH-WD), which may facilitate formation of heterotrimeric or multiprotein complexes. Members of this family are involved in a variety of cellular processes, including cell cycle progression, signal transduction, apoptosis, and gene regulation. This protein contains 6 WD repeats and is highly expressed in the heart. The gene maps to the region on chromosome 22q11, which is deleted in DiGeorge syndrome, trisomic in derivative 22 syndrome and tetrasomic in cat-eye syndrome. Therefore, this gene may contribute to the etiology of those disorders.

Alias Symbols: GY2, FKSG1, WDR14, WDVCF, DGCRK3

Protein Interaction Partner: UBC,

Protein Size: 327

Molecular Weight: 36 kDa

Gene ID: 54584

NCBI Accession: [NM_053004, NP_443730](#)

UniProt: [Q9BYB4](#)

Application Details

Application Notes: Optimal working dilutions should be determined experimentally by the investigator.

Comment: Antigen size: 327 AA

Restrictions: For Research Use only

Handling

Format: Liquid

Concentration: Lot specific

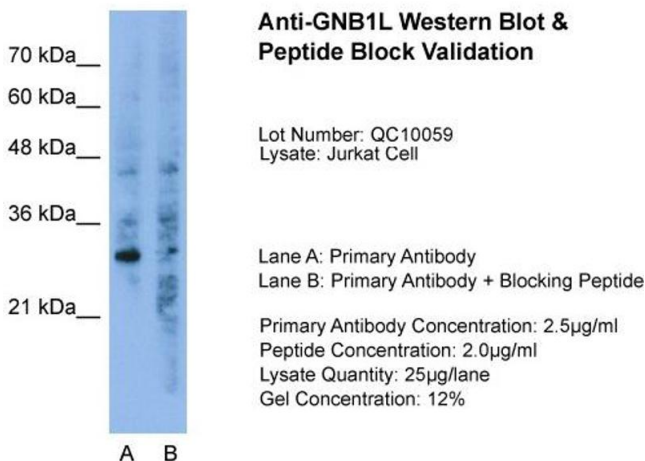
Handling

Buffer:	Liquid. Purified antibody supplied in 1x PBS buffer with 0.09 % (w/v) sodium azide and 2 % sucrose.
Preservative:	Sodium azide
Precaution of Use:	This product contains Sodium azide: a POISONOUS AND HAZARDOUS SUBSTANCE which should be handled by trained staff only.
Handling Advice:	Avoid repeated freeze-thaw cycles.
Storage:	-20 °C
Storage Comment:	For short term use, store at 2-8°C up to 1 week. For long term storage, store at -20°C in small aliquots to prevent freeze-thaw cycles.

Publications

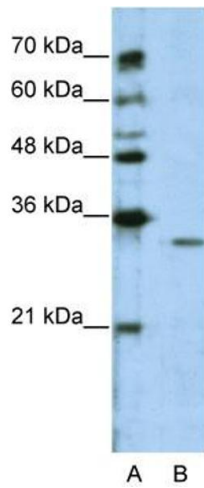
Product cited in: Gerhard, Wagner, Feingold, Shenmen, Grouse, Schuler, Klein, Old, Rasooly, Good, Guyer, Peck, Derge, Lipman, Collins, Jang, Sherry, Feolo, Misquitta, Lee, Rotmistrovsky, Greenhut, Schaefer, Buetow et al.: "The status, quality, and expansion of the NIH full-length cDNA project: the Mammalian Gene Collection (MGC). ..." in: **Genome research**, Vol. 14, Issue 10B, pp. 2121-7, (2004) ([PubMed](#)).

Images



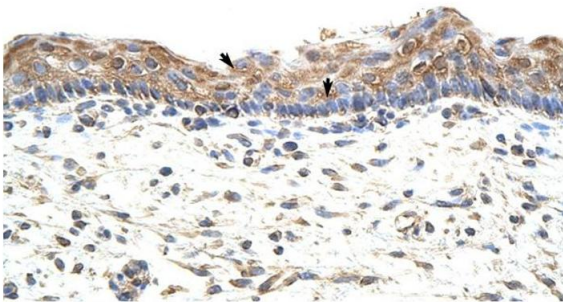
Western Blotting

Image 1. Host: Rabbit Target Name: GNB1L Sample Type: Jurkat Lane A: Primary Antibody Lane B: Primary Antibody + Blocking Peptide Primary Antibody Concentration: 2.5ug/mL Peptide Concentration: 2.0ug/mL Lysate Quantity: 25ug/lane Gel Concentration: 12%



Western Blotting

Image 2. WB Suggested Anti-GNB1L Antibody Titration:
2.5ug/ml Positive Control: Jurkat cell lysate



Immunohistochemistry

Image 3. Rabbit Anti-GNB1L Antibody Paraffin Embedded
Tissue: Human Skin Cellular Data: Squamous epithelial cells
Antibody Concentration: 4.0-8.0 ug/ml Magnification: 400X

Rabbit Anti-GNB1L Antibody
Catalog Number: ARP41328
Lot Number: QC10059
Paraffin Embedded Tissue: Human Skin
Cells with Positive label: Squamous epithelial cells (Indicated with Arrows)
Antibody Concentration: 4.0-8.0 µg/ml
Magnification: 400X

Please check the [product details page](#) for more images. Overall 4 images are available for ABIN2776748.