

Datasheet for ABIN2776763  
**anti-MSH4 antibody (N-Term)**

## 2 Images

[Go to Product page](#)

## Overview

Quantity:	100 µL
Target:	MSH4
Binding Specificity:	N-Term
Reactivity:	Human, Mouse, Rat, Cow, Dog, Horse, Guinea Pig
Host:	Rabbit
Clonality:	Polyclonal
Conjugate:	This MSH4 antibody is un-conjugated
Application:	Western Blotting (WB)

## Product Details

Immunogen:	The immunogen is a synthetic peptide directed towards the N terminal region of human MSH4
Sequence:	SSARDTNYPQ TLKTPPLSTGN PQRSGYKSWT PQVGYSASSS SAISAHSPSV
Predicted Reactivity:	Cow: 86%, Dog: 86%, Guinea Pig: 93%, Horse: 86%, Human: 100%, Mouse: 86%, Rat: 93%
Characteristics:	This is a rabbit polyclonal antibody against MSH4. It was validated on Western Blot using a cell lysate as a positive control.
Purification:	Affinity Purified

## Target Details

Target:	MSH4
Alternative Name:	MSH4 ( <a href="#">MSH4 Products</a> )

## Target Details

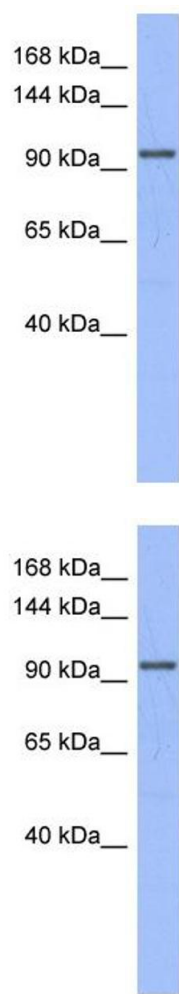
Background:	MSH4 is involved in meiotic recombination. MSH4 is also required for reciprocal recombination and proper segregation of homologous chromosomes at meiosis. Alias Symbols: - Protein Interaction Partner: VHL, VCP, VBP1, UBC, MSH5, GPS2, MLH3, MSH4, RPA1, MLH1, RAD51, Protein Size: 936
Molecular Weight:	105 kDa
Gene ID:	4438
NCBI Accession:	<a href="#">NM_002440</a> , <a href="#">NP_002431</a>
UniProt:	<a href="#">O15457</a>

## Application Details

Application Notes:	Optimal working dilutions should be determined experimentally by the investigator.
Comment:	Antigen size: 936 AA
Restrictions:	For Research Use only

## Handling

Format:	Liquid
Concentration:	Lot specific
Buffer:	Liquid. Purified antibody supplied in 1x PBS buffer with 0.09 % (w/v) sodium azide and 2 % sucrose.
Preservative:	Sodium azide
Precaution of Use:	This product contains Sodium azide: a POISONOUS AND HAZARDOUS SUBSTANCE which should be handled by trained staff only.
Handling Advice:	Avoid repeated freeze-thaw cycles.
Storage:	-20 °C
Storage Comment:	For short term use, store at 2-8°C up to 1 week. For long term storage, store at -20°C in small aliquots to prevent freeze-thaw cycles.



Western Blotting

**Image 1.** WB Suggested Anti-MSH4 Antibody Titration: 0.2-1 ug/ml ELISA Titer: 1:62500 Positive Control: PANC1 cell lysate MSH4 is supported by BioGPS gene expression data to be expressed in PANC1

Western Blotting

**Image 2.** WB Suggested Anti-MSH4 Antibody Titration: 0.2-1 µg/mL ELISA Titer: 1:2500 Positive Control: PANC1 cell lysate MSH4 is supported by BioGPS gene expression data to be expressed in PANC1