



[Go to Product page](#)

Datasheet for ABIN2776764  
**anti-MSH5 antibody (N-Term)**

1 Image

### Overview

Quantity:	100 µL
Target:	MSH5
Binding Specificity:	N-Term
Reactivity:	Human, Mouse, Rat, Horse, Rabbit, Cow, Dog, Guinea Pig
Host:	Rabbit
Clonality:	Polyclonal
Conjugate:	This MSH5 antibody is un-conjugated
Application:	Western Blotting (WB)

### Product Details

Immunogen:	The immunogen is a synthetic peptide directed towards the N terminal region of human MSH5
Sequence:	DENMTRFLGK LASQEHREPK RPEIIFLPSV DFGLEISKQR LLSGNYSFIP
Predicted Reactivity:	Cow: 100%, Dog: 86%, Guinea Pig: 79%, Horse: 100%, Human: 100%, Mouse: 86%, Rabbit: 93%, Rat: 100%
Characteristics:	This is a rabbit polyclonal antibody against MSH5. It was validated on Western Blot using a cell lysate as a positive control.
Purification:	Affinity Purified

### Target Details

Target:	MSH5
---------	------

## Target Details

---

Alternative Name:	MSH5 ( <a href="#">MSH5 Products</a> )
Background:	<p>MSH5 is a member of the mutS family of proteins that are involved in DNA mismatch repair or meiotic recombination processes. This protein is similar to a <i>Saccharomyces cerevisiae</i> protein that participates in meiotic segregation fidelity and crossing-over. This protein forms heterooligomers with another member of this family, mutS homolog 4. This gene encodes a member of the mutS family of proteins that are involved in DNA mismatch repair or meiotic recombination processes. This protein is similar to a <i>Saccharomyces cerevisiae</i> protein that participates in meiotic segregation fidelity and crossing-over. This protein forms heterooligomers with another member of this family, mutS homolog 4. Alternative splicing results in four transcript variants encoding three different isoforms.</p> <p>Alias Symbols: DKFZp434C1615, G7, MGC2939, MutSH5, NG23, MUTSH5</p> <p>Protein Interaction Partner: MSH4, GPS2, UBC,</p> <p>Protein Size: 835</p>
Molecular Weight:	93 kDa
Gene ID:	4439
NCBI Accession:	<a href="#">NM_172165</a> , <a href="#">NP_751897</a>
Pathways:	<a href="#">M Phase</a>

## Application Details

---

Application Notes:	Optimal working dilutions should be determined experimentally by the investigator.
Comment:	Antigen size: 835 AA
Restrictions:	For Research Use only

## Handling

---

Format:	Liquid
Concentration:	Lot specific
Buffer:	Liquid. Purified antibody supplied in 1x PBS buffer with 0.09 % (w/v) sodium azide and 2 % sucrose.
Preservative:	Sodium azide
Precaution of Use:	This product contains Sodium azide: a POISONOUS AND HAZARDOUS SUBSTANCE which should be handled by trained staff only.

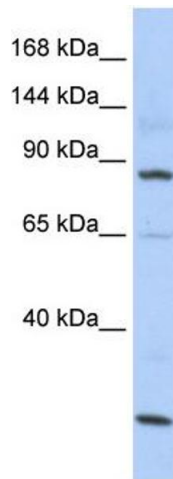
## Handling

Handling Advice: Avoid repeated freeze-thaw cycles.

Storage: -20 °C

Storage Comment: For short term use, store at 2-8°C up to 1 week. For long term storage, store at -20°C in small aliquots to prevent freeze-thaw cycles.

## Images



### Western Blotting

**Image 1.** WB Suggested Anti-MSH5 Antibody Titration: 0.2-1 ug/ml ELISA Titer: 1:1562500 Positive Control: HepG2 cell lysate There is BioGPS gene expression data showing that MSH5 is expressed in HepG2