

Datasheet for ABIN2776766
anti-ELAC1 antibody (Middle Region)[Go to Product page](#)[1 Image](#)[1 Publication](#)

Overview

Quantity:	100 µL
Target:	ELAC1
Binding Specificity:	Middle Region
Reactivity:	Human, Mouse, Rat, Cow, Dog, Guinea Pig, Horse, Rabbit
Host:	Rabbit
Clonality:	Polyclonal
Conjugate:	This ELAC1 antibody is un-conjugated
Application:	Western Blotting (WB)

Product Details

Immunogen:	The immunogen is a synthetic peptide directed towards the middle region of human ELAC1
Sequence:	LFHRIPSGF SVVEKKRPGK LNAQKLKDLG VPPGPAYGKL KNGISVVLEN
Predicted Reactivity:	Cow: 100%, Dog: 100%, Guinea Pig: 100%, Horse: 100%, Human: 100%, Mouse: 92%, Rabbit: 100%, Rat: 100%
Characteristics:	This is a rabbit polyclonal antibody against ELAC1. It was validated on Western Blot using a cell lysate as a positive control.
Purification:	Affinity Purified

Target Details

Target:	ELAC1
---------	-------

Target Details

Alternative Name:	ELAC1 (ELAC1 Products)
Background:	<p>ELAC1 belongs to the RNase Z family. It is a zinc phosphodiesterase, which displays some tRNA 3'-processing endonuclease activity. The protein is probably involved in tRNA maturation, by removing a 3'-trailer from precursor tRNA.</p> <p>Alias Symbols: D29</p> <p>Protein Size: 363</p>
Molecular Weight:	40 kDa
Gene ID:	55520
NCBI Accession:	NM_018696 , NP_061166
UniProt:	Q9H777

Application Details

Application Notes:	Optimal working dilutions should be determined experimentally by the investigator.
Comment:	Antigen size: 363 AA
Restrictions:	For Research Use only

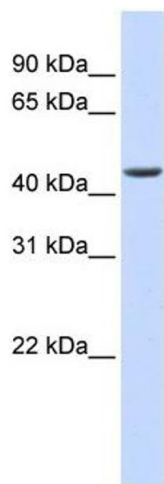
Handling

Format:	Liquid
Concentration:	Lot specific
Buffer:	Liquid. Purified antibody supplied in 1x PBS buffer with 0.09 % (w/v) sodium azide and 2 % sucrose.
Preservative:	Sodium azide
Precaution of Use:	This product contains Sodium azide: a POISONOUS AND HAZARDOUS SUBSTANCE which should be handled by trained staff only.
Handling Advice:	Avoid repeated freeze-thaw cycles.
Storage:	-20 °C
Storage Comment:	For short term use, store at 2-8°C up to 1 week. For long term storage, store at -20°C in small aliquots to prevent freeze-thaw cycles.

Publications

Product cited in: Braun, Sponder, Pieper, Aschenbach, Deiner: "GABA selectively increases mucin-1 expression in isolated pig jejunum." in: **Genes & nutrition**, Vol. 10, Issue 6, pp. 47, (2015) ([PubMed](#)).

Images



Western Blotting

Image 1. WB Suggested Anti-ELAC1 Antibody Titration: 0.2-1 ug/ml ELISA Titer: 1:1562500 Positive Control: Human heart