

Datasheet for ABIN2776775

anti-Ketohexokinase antibody (C-Term)

3 Images

[Go to Product page](#)

Overview

Quantity:	100 µL
Target:	Ketohexokinase (KHK)
Binding Specificity:	C-Term
Reactivity:	Human, Mouse, Rat, Cow, Dog, Guinea Pig, Horse, Rabbit
Host:	Rabbit
Clonality:	Polyclonal
Conjugate:	This Ketohexokinase antibody is un-conjugated
Application:	Western Blotting (WB), Immunohistochemistry (IHC)

Product Details

Immunogen:	The immunogen is a synthetic peptide directed towards the C terminal region of human KHK
Sequence:	FQSAEEALRG LYGRVRKGAV LVCAWAEEGA DALGPDGKLL HSDAFPPPRV
Predicted Reactivity:	Cow: 93%, Dog: 93%, Guinea Pig: 93%, Horse: 86%, Human: 100%, Mouse: 93%, Rabbit: 79%, Rat: 93%
Characteristics:	This is a rabbit polyclonal antibody against KHK. It was validated on Western Blot and immunohistochemistry.
Purification:	Affinity Purified

Target Details

Target:	Ketohexokinase (KHK)
---------	----------------------

Target Details

Alternative Name:	KHK (KHK Products)
Background:	<p>KHK is a ketohexokinase that catalyzes conversion of fructose to fructose-1-phosphate. The product of this gene is the first enzyme with a specialized pathway that catabolizes dietary fructose. KHK encodes the gene ketohexokinase that catalyzes conversion of fructose to fructose-1-phosphate. The splice variant presented encodes the highly active form found in liver, renal cortex, and small intestine, while the alternate variant encodes the lower activity form found in most other tissues.</p> <p>Protein Interaction Partner: LHX9, COPS5, UBC, KHK, CDK5RAP3, RNPS1, CD2BP2, DEDD, RANBP3, SNRPB, LYZ, LCN1, AP2S1, ARRB1,</p> <p>Protein Size: 298</p>
Molecular Weight:	33 kDa
Gene ID:	3795
NCBI Accession:	NM_006488 , NP_006479
UniProt:	P50053

Application Details

Application Notes:	Optimal working dilutions should be determined experimentally by the investigator.
Comment:	Antigen size: 298 AA
Restrictions:	For Research Use only

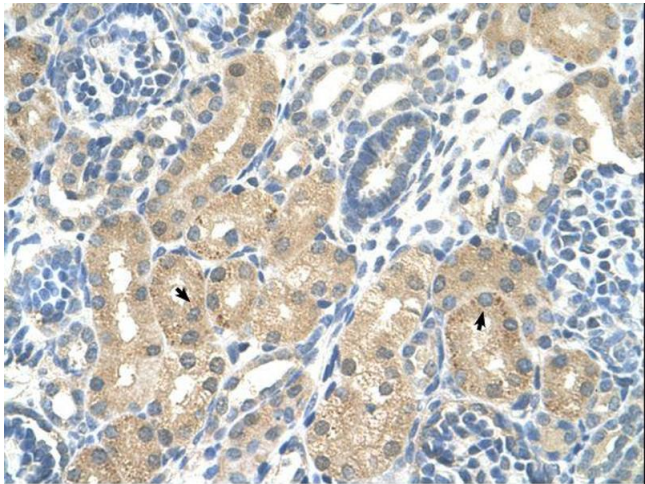
Handling

Format:	Liquid
Concentration:	Lot specific
Buffer:	Liquid. Purified antibody supplied in 1x PBS buffer with 0.09 % (w/v) sodium azide and 2 % sucrose.
Preservative:	Sodium azide
Precaution of Use:	This product contains Sodium azide: a POISONOUS AND HAZARDOUS SUBSTANCE which should be handled by trained staff only.
Handling Advice:	Avoid repeated freeze-thaw cycles.
Storage:	-20 °C

Handling

Storage Comment: For short term use, store at 2-8°C up to 1 week. For long term storage, store at -20°C in small aliquots to prevent freeze-thaw cycles.

Images



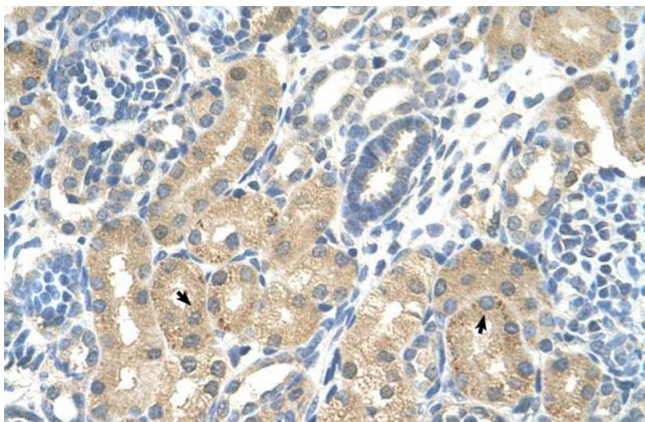
Immunohistochemistry

Image 1.



Western Blotting

Image 2. WB Suggested Anti-KHK Antibody Titration: 1 ug/ml Positive Control: Fetal liver cell lysate



Immunohistochemistry

Image 3. Rabbit Anti-KHK Antibody Paraffin Embedded Tissue: Human Kidney Cellular Data: Epithelial cells of renal tubule Antibody Concentration: 4.0-8.0 ug/ml Magnification: 400X