

Datasheet for ABIN2776778
anti-MYL3/CMLC1 antibody (N-Term)

2 Images

[Go to Product page](#)

Overview

Quantity:	100 µL
Target:	MYL3/CMLC1 (MYL3)
Binding Specificity:	N-Term
Reactivity:	Human, Mouse, Rat, Guinea Pig, Horse, Cow, Rabbit, Dog, Zebrafish (Danio rerio), Saccharomyces cerevisiae
Host:	Rabbit
Clonality:	Polyclonal
Conjugate:	This MYL3/CMLC1 antibody is un-conjugated
Application:	Western Blotting (WB)

Product Details

Immunogen:	The immunogen is a synthetic peptide directed towards the N terminal region of human MYL3
Sequence:	VEFDASKIKI EFTPEQIEEF KEAFMLFDRT PKCEMKITYG QCGDVLRALG
Predicted Reactivity:	Cow: 100%, Dog: 100%, Guinea Pig: 100%, Horse: 100%, Human: 100%, Mouse: 100%, Rabbit: 100%, Rat: 100%, Yeast: 90%, Zebrafish: 79%
Characteristics:	This is a rabbit polyclonal antibody against MYL3. It was validated on Western Blot using a cell lysate as a positive control.
Purification:	Affinity Purified

Target Details

Target:	MYL3/CMLC1 (MYL3)
---------	-------------------

Target Details

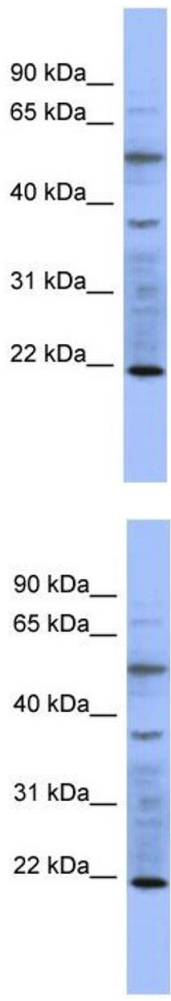
Alternative Name:	MYL3 (MYL3 Products)
Background:	<p>MYL3 encodes myosin light chain 3, an alkali light chain also referred to in the literature as both the ventricular isoform and the slow skeletal muscle isoform. Mutations in MYL3 have been identified as a cause of mid-left ventricular chamber type hypert</p> <p>Alias Symbols: CMH8, MLC1V, VLC1, MLC1SB</p> <p>Protein Interaction Partner: UBC, ATG101, FTH1, SP1, YWHAQ, CASP3,</p> <p>Protein Size: 195</p>
Molecular Weight:	22 kDa
Gene ID:	4634
NCBI Accession:	NM_000258 , NP_000249
UniProt:	Q5R887

Application Details

Application Notes:	Optimal working dilutions should be determined experimentally by the investigator.
Comment:	Antigen size: 195 AA
Restrictions:	For Research Use only

Handling

Format:	Liquid
Concentration:	Lot specific
Buffer:	Liquid. Purified antibody supplied in 1x PBS buffer with 0.09 % (w/v) sodium azide and 2 % sucrose.
Preservative:	Sodium azide
Precaution of Use:	This product contains Sodium azide: a POISONOUS AND HAZARDOUS SUBSTANCE which should be handled by trained staff only.
Handling Advice:	Avoid repeated freeze-thaw cycles.
Storage:	-20 °C
Storage Comment:	For short term use, store at 2-8°C up to 1 week. For long term storage, store at -20°C in small aliquots to prevent freeze-thaw cycles.



Western Blotting

Image 1. WB Suggested Anti-MYL3 Antibody Titration: 0.2-1 ug/ml ELISA Titer: 1:1562500 Positive Control: COLO205 cell lysate MYL3 is supported by BioGPS gene expression data to be expressed in COLO205

Western Blotting

Image 2. WB Suggested Anti-MYL3 Antibody Titration: 0.2-1 μ g/mL ELISA Titer: 1:1562500 Positive Control: COLO205 cell lysate MYL3 is supported by BioGPS gene expression data to be expressed in COLO205