

Datasheet for ABIN2776780

anti-SLC12A1 antibody (N-Term)

5 Images

3 Publications

[Go to Product page](#)

Overview

Quantity:	100 µL
Target:	SLC12A1
Binding Specificity:	N-Term
Reactivity:	Rat, Human, Mouse, Rabbit, Dog, Pig, Guinea Pig, Cow, Horse
Host:	Rabbit
Clonality:	Polyclonal
Conjugate:	This SLC12A1 antibody is un-conjugated
Application:	Western Blotting (WB), Immunohistochemistry (IHC)

Product Details

Immunogen:	The immunogen is a synthetic peptide directed towards the N terminal region of human SLC12A1
Sequence:	NEKKSRGFFN YQASIFAENF GPRFTKGEGF FSVFAIFFPA ATGILAGANI
Predicted Reactivity:	Cow: 100%, Dog: 100%, Guinea Pig: 93%, Horse: 100%, Human: 100%, Mouse: 100%, Pig: 100%, Rabbit: 100%, Rat: 100%
Characteristics:	This is a rabbit polyclonal antibody against SLC12A1. It was validated on Western Blot and immunohistochemistry.
Purification:	Affinity Purified

Target Details

Target:	SLC12A1
---------	---------

Target Details

Alternative Name:	SLC12A1 (SLC12A1 Products)
Background:	<p>The sodium-potassium-chloride cotransporter isoform 2 is kidney-specific and is found on the apical membrane of the thick ascending limb of Henle's loop and the macula densa. It accounts for most of the NaCl resorption with the stoichiometry of 1Na:1K:2Cl and is sensitive to such diuretics as furosemide and bumetanide. Some Bartter-like syndromes result from defects in this gene.</p> <p>Alias Symbols: BSC1, MGC48843, NKCC2</p> <p>Protein Interaction Partner: STK39, OXSR1,</p> <p>Protein Size: 430</p>
Molecular Weight:	47 kDa
Gene ID:	6557
NCBI Accession:	NM_000338
UniProt:	Q8IUN5

Application Details

Application Notes:	Optimal working dilutions should be determined experimentally by the investigator.
Comment:	Antigen size: 430 AA
Restrictions:	For Research Use only

Handling

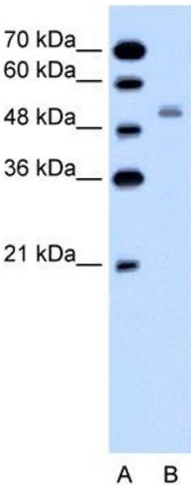
Format:	Liquid
Concentration:	Lot specific
Buffer:	Liquid. Purified antibody supplied in 1x PBS buffer with 0.09 % (w/v) sodium azide and 2 % sucrose.
Preservative:	Sodium azide
Precaution of Use:	This product contains Sodium azide: a POISONOUS AND HAZARDOUS SUBSTANCE which should be handled by trained staff only.
Handling Advice:	Avoid repeated freeze-thaw cycles.
Storage:	-20 °C
Storage Comment:	For short term use, store at 2-8°C up to 1 week. For long term storage, store at -20°C in small

aliquots to prevent freeze-thaw cycles.

Publications

Product cited in: Hirata, Yimin, Segawa, Ozaki, Kobayashi, Shigyo, Chiba: "Xanthohumol prevents atherosclerosis by reducing arterial cholesterol content via CETP and apolipoprotein E in CETP-transgenic mice." in: **PLoS ONE**, Vol. 7, Issue 11, pp. e49415, (2012) ([PubMed](#)).

Images



Western Blotting

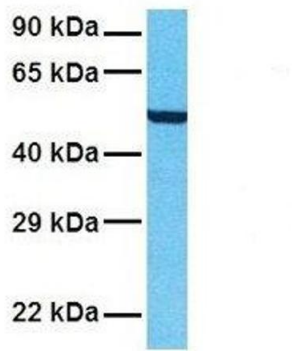
Image 1. WB Suggested Anti-SLC12A1 Antibody Titration:
0.2-1 ug/ml Positive Control: Jurkat cell lysate



Western Blotting

Image 2. Host: Rabbit Target Name: SLC12A1 Sample Type:
Jurkat Lane A: Primary Antibody Lane B: Primary Antibody +
Blocking Peptide Primary Antibody Concentration: 1ug/ml
Peptide Concentration: 5ug/ml Lysate Quantity:
25ug/lane/lane Gel Concentration: 0.12

SLC12A1



Western Blotting

Image 3. Host: Rabbit Target Name: SLC12A1 Sample
Tissue: Human A549 Antibody Dilution: 1.0ug/ml

Please check the [product details page](#) for more images. Overall 5 images are available for ABIN2776780.