

Datasheet for ABIN2776783  
**anti-Tropomyosin antibody (N-Term)**[Go to Product page](#)

## 4 Images

## Overview

Quantity:	100 µL
Target:	Tropomyosin (TPM1)
Binding Specificity:	N-Term
Reactivity:	Human, Rat, Mouse, Zebrafish (Danio rerio), Rabbit, Cow, Dog, Horse, Sheep, Guinea Pig
Host:	Rabbit
Clonality:	Polyclonal
Conjugate:	This Tropomyosin antibody is un-conjugated
Application:	Western Blotting (WB), Immunohistochemistry (IHC)

## Product Details

Immunogen:	The immunogen is a synthetic peptide directed towards the N terminal region of human TPM1
Sequence:	DRAEQAEADK KAAEDRSKQL EDELVSLQKK LKGTEDELDK YSEALKDAQE
Predicted Reactivity:	Cow: 93%, Dog: 100%, Guinea Pig: 100%, Horse: 93%, Human: 100%, Mouse: 100%, Rabbit: 100%, Rat: 100%, Sheep: 93%, Zebrafish: 100%
Characteristics:	This is a rabbit polyclonal antibody against TPM1. It was validated on Western Blot and immunohistochemistry.
Purification:	Protein A purified

## Target Details

Target:	Tropomyosin (TPM1)
---------	--------------------

## Target Details

Alternative Name:	TPM1 ( <a href="#">TPM1 Products</a> )
Background:	<p>TPM1 is a member of the tropomyosin family of highly conserved, widely distributed actin-binding proteins involved in the contractile system of striated and smooth muscles and the cytoskeleton of non-muscle cells. Tropomyosin is composed of two alpha-helical chains arranged as a coiled-coil. It is polymerized end to end along the two grooves of actin filaments and provides stability to the filaments. The protein is one type of alpha helical chain that forms the predominant tropomyosin of striated muscle, where it also functions in association with the troponin complex to regulate the calcium-dependent interaction of actin and myosin during muscle contraction. This gene is a member of the tropomyosin family of highly conserved, widely distributed actin-binding proteins involved in the contractile system of striated and smooth muscles and the cytoskeleton of non-muscle cells. Tropomyosin is composed of two alpha-helical chains arranged as a coiled-coil. It is polymerized end to end along the two grooves of actin filaments and provides stability to the filaments. The encoded protein is one type of alpha helical chain that forms the predominant tropomyosin of striated muscle, where it also functions in association with the troponin complex to regulate the calcium-dependent interaction of actin and myosin during muscle contraction. In smooth muscle and non-muscle cells, alternatively spliced transcript variants encoding a range of isoforms have been described. Mutations in this gene are associated with type 3 familial hypertrophic cardiomyopathy.</p> <p>Alias Symbols: CMH3, TMSA, TPM1-alpha, CMD1Y, C15orf13, HTM-alpha</p> <p>Protein Interaction Partner: GOLGA2, CAGE1, C1orf216, SYCE1, KXD1, TFPT, MAD1L1, TPM4, TP53, TNNT1, UBC, MDM2, ETFA, FOXK1, KIAA1598, PPP6R3, APPL2, CDC37, MGEA5, STUB1, ABI2, DNAJC7, HSP90B1, PARK2, LRCH3, PAN2, TGFB1, SPTBN1, ATF2, MDC1, BRCA1, PPP4R2, SRXN1, NUDCD2, RBM15, THOC2,</p> <p>Protein Size: 284</p>
Molecular Weight:	31 kDa
Gene ID:	7168
NCBI Accession:	<a href="#">NM_000366</a> , <a href="#">NP_000357</a>
UniProt:	<a href="#">P09493</a>
Pathways:	<a href="#">Regulation of Actin Filament Polymerization</a>

## Application Details

Application Notes:	Optimal working dilutions should be determined experimentally by the investigator.
--------------------	--

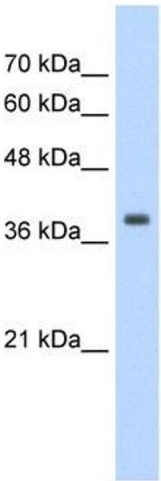
## Application Details

Comment:	Antigen size: 284 AA
Restrictions:	For Research Use only

## Handling

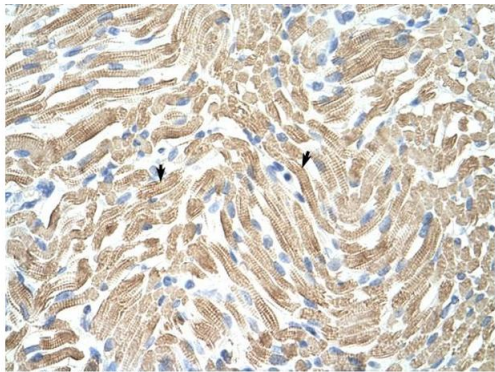
Format:	Liquid
Concentration:	Lot specific
Buffer:	Liquid. Purified antibody supplied in 1x PBS buffer with 0.09 % (w/v) sodium azide and 2 % sucrose.
Preservative:	Sodium azide
Precaution of Use:	This product contains Sodium azide: a POISONOUS AND HAZARDOUS SUBSTANCE which should be handled by trained staff only.
Handling Advice:	Avoid repeated freeze-thaw cycles.
Storage:	-20 °C
Storage Comment:	For short term use, store at 2-8°C up to 1 week. For long term storage, store at -20°C in small aliquots to prevent freeze-thaw cycles.

## Images



### Western Blotting

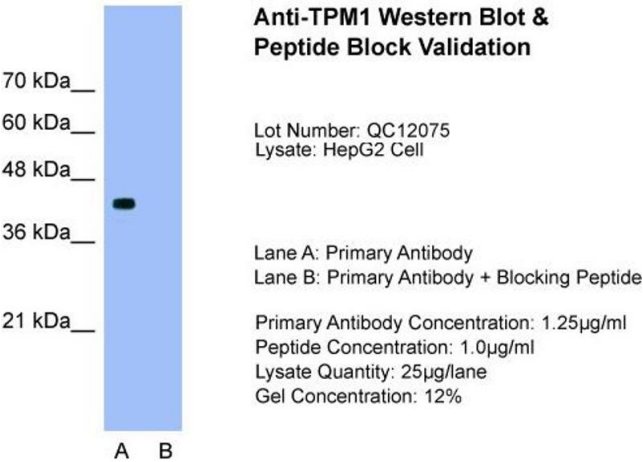
**Image 1.** WB Suggested Anti-TPM1 Antibody Titration:  
1.25ug/ml Positive Control: HepG2 cell lysate



Rabbit Anti-TPM1 Antibody  
Catalog Number: ARP41392  
Lot Number: QC12075  
Paraffin Embedded Tissue: Human Muscle  
Cells with Positive label: Skeletal muscle cells (Indicated with Arrows)  
Antibody Concentration: 4.0-8.0 µg/ml  
Magnification: 400X

Immunohistochemistry

**Image 2.** Rabbit Anti-TPM1 Antibody Paraffin Embedded  
Tissue: Human Muscle Cellular Data: Skeletal muscle cells  
Antibody Concentration: 4.0-8.0 ug/ml Magnification: 400X



Western Blotting

**Image 3.** Host: Rabbit Target Name: TPM1 Sample Type:  
HepG2 Lane A: Primary Antibody Lane B: Primary Antibody +  
Blocking Peptide Primary Antibody Concentration:  
1.25ug/mL Peptide Concentration: 1.0ug/mL Lysate  
Quantity: 25ug/lane Gel Concentration: 12%

Please check the [product details page](#) for more images. Overall 4 images are available for ABIN2776783.