

Datasheet for ABIN2776784
anti-HRG antibody (Middle Region)



[Go to Product page](#)

2 Images

Overview

Quantity:	100 µL
Target:	HRG
Binding Specificity:	Middle Region
Reactivity:	Human, Rabbit
Host:	Rabbit
Clonality:	Polyclonal
Conjugate:	This HRG antibody is un-conjugated
Application:	Western Blotting (WB)

Product Details

Immunogen:	The immunogen is a synthetic peptide directed towards the middle region of human HRG
Sequence:	EVLPLPEANF PSFPLPHHKH PLKPDNQFPF QSVSESCPGK FKSGFPQVSM
Predicted Reactivity:	Human: 100%, Rabbit: 79%
Characteristics:	This is a rabbit polyclonal antibody against HRG. It was validated on Western Blot using a cell lysate as a positive control.
Purification:	Affinity Purified

Target Details

Target:	HRG
Alternative Name:	HRG (HRG Products)

Target Details

Background:	<p>This histidine-rich glycoprotein(HRG) contains two cystatin-like domains and is located in plasma and platelets. The physiological function has not been determined but it is known that the protein binds heme, dyes and divalent metal ions. It can inhibit rosette formation and interacts with heparin, thrombospondin and plasminogen. Two of the protein's effects, the inhibition of fibrinolysis and the reduction of inhibition of coagulation, indicate a potential prothrombotic effect. Mutations in this gene lead to thrombophilia due to abnormal histidine-rich glycoprotein levels. This histidine-rich glycoprotein contains two cystatin-like domains and is located in plasma and platelets. The physiological function has not been determined but it is known that the protein binds heme, dyes and divalent metal ions. It can inhibit rosette formation and interacts with heparin, thrombospondin and plasminogen. Two of the protein's effects, the inhibition of fibrinolysis and the reduction of inhibition of coagulation, indicate a potential prothrombotic effect. Mutations in this gene lead to thrombophilia due to abnormal histidine-rich glycoprotein levels. Publication Note: This RefSeq record includes a subset of the publications that are available for this gene. Please see the Entrez Gene record to access additional publications.</p> <p>Alias Symbols: DKFZp779H1622, HPRG, HRGP</p> <p>Protein Interaction Partner: RCHY1, RABAC1, SPRY1, CHRD, TNFRSF1A, PLSCR1, FN1, THBS1, PLG, FCGR1A, FGA, C1QB, C1QA,</p> <p>Protein Size: 525</p>
-------------	--

Molecular Weight:	60 kDa
-------------------	--------

Gene ID:	3273
----------	------

NCBI Accession:	NM_000412 , NP_000403
-----------------	---

UniProt:	P04196
----------	------------------------

Application Details

Application Notes:	Optimal working dilutions should be determined experimentally by the investigator.
--------------------	--

Comment:	Antigen size: 525 AA
----------	----------------------

Restrictions:	For Research Use only
---------------	-----------------------

Handling

Format:	Liquid
---------	--------

Concentration:	Lot specific
----------------	--------------

Handling

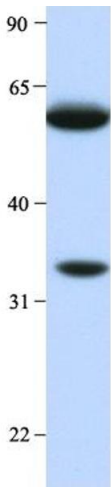
Buffer:	Liquid. Purified antibody supplied in 1x PBS buffer with 0.09 % (w/v) sodium azide and 2 % sucrose.
Preservative:	Sodium azide
Precaution of Use:	This product contains Sodium azide: a POISONOUS AND HAZARDOUS SUBSTANCE which should be handled by trained staff only.
Handling Advice:	Avoid repeated freeze-thaw cycles.
Storage:	-20 °C
Storage Comment:	For short term use, store at 2-8°C up to 1 week. For long term storage, store at -20°C in small aliquots to prevent freeze-thaw cycles.

Images



Western Blotting

Image 1. WB Suggested Anti-HRG Antibody Titration: 0.2-1 ug/ml ELISA Titer: 1:312500 Positive Control: HepG2 cell lysate



Western Blotting

Image 2. Host: Rabbit Target Name: HRG Sample Type: Human Liver Antibody Dilution: 1.0 ug/ml