



[Go to Product page](#)

Datasheet for ABIN2776787

## anti-PON1 antibody (Middle Region)

2 Images

1 Publication

### Overview

Quantity:	100 µL
Target:	PON1
Binding Specificity:	Middle Region
Reactivity:	Human, Mouse, Rat, Rabbit, Dog, Cow, Horse, Pig
Host:	Rabbit
Clonality:	Polyclonal
Conjugate:	This PON1 antibody is un-conjugated
Application:	Western Blotting (WB), Immunohistochemistry (IHC)

### Product Details

Immunogen:	The immunogen is a synthetic peptide directed towards the middle region of human PON1
Sequence:	VVAEGDFAN GINISPDGKY VYIAELLAHK IHVYEKHANW TLTPLKSLDF
Predicted Reactivity:	Cow: 92%, Dog: 93%, Horse: 93%, Human: 100%, Mouse: 92%, Pig: 100%, Rabbit: 100%, Rat: 100%
Characteristics:	This is a rabbit polyclonal antibody against PON1. It was validated on Western Blot using a cell lysate as a positive control.
Purification:	Affinity Purified

### Target Details

Target:	PON1
---------	------

## Target Details

---

Alternative Name:	PON1 ( <a href="#">PON1 Products</a> )
Background:	<p>PON1 hydrolyzes the toxic metabolites of a variety of organophosphorus insecticides. It is capable of hydrolyzing a broad spectrum of organophosphate substrates and a number of aromatic carboxylic acid esters. It may mediate an enzymatic protection of low</p> <p>Alias Symbols: ESA, PON, MVCD5</p> <p>Protein Interaction Partner: CLU, SUMO4, APOA1, ALB,</p> <p>Protein Size: 355</p>
Molecular Weight:	40 kDa
Gene ID:	5444
NCBI Accession:	<a href="#">NM_000446</a> , <a href="#">NP_000437</a>
UniProt:	<a href="#">P27169</a>

## Application Details

---

Application Notes:	Optimal working dilutions should be determined experimentally by the investigator.
Comment:	Antigen size: 355 AA
Restrictions:	For Research Use only

## Handling

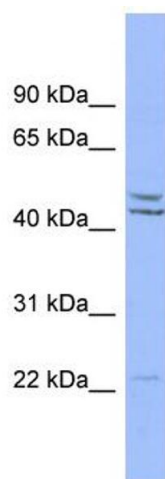
---

Format:	Liquid
Concentration:	Lot specific
Buffer:	Liquid. Purified antibody supplied in 1x PBS buffer with 0.09 % (w/v) sodium azide and 2 % sucrose.
Preservative:	Sodium azide
Precaution of Use:	This product contains Sodium azide: a POISONOUS AND HAZARDOUS SUBSTANCE which should be handled by trained staff only.
Handling Advice:	Avoid repeated freeze-thaw cycles.
Storage:	-20 °C
Storage Comment:	For short term use, store at 2-8°C up to 1 week. For long term storage, store at -20°C in small aliquots to prevent freeze-thaw cycles.

## Publications

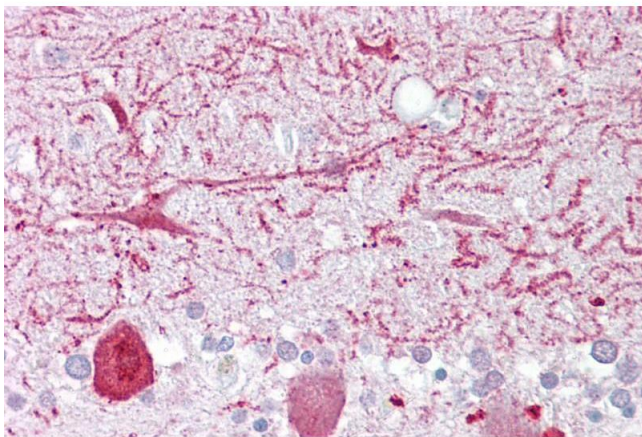
Product cited in: Gerhard, Wagner, Feingold, Shenmen, Grouse, Schuler, Klein, Old, Rasooly, Good, Guyer, Peck, Derge, Lipman, Collins, Jang, Sherry, Feolo, Misquitta, Lee, Rotmistrovsky, Greenhut, Schaefer, Buetow et al.: "The status, quality, and expansion of the NIH full-length cDNA project: the Mammalian Gene Collection (MGC). ..." in: **Genome research**, Vol. 14, Issue 10B, pp. 2121-7, (2004) ([PubMed](#)).

## Images



### Western Blotting

**Image 1.** WB Suggested Anti-PON1 Antibody Titration: 0.2-1 ug/ml ELISA Titer: 1:1562500 Positive Control: HT1080 cell lysate



### Immunohistochemistry

**Image 2.** Immunohistochemistry with Brain, cerebellum tissue at an antibody concentration of 5µg/ml using anti-PON1 antibody (ARP41400\_P050)