

Datasheet for ABIN2776792
anti-CYP1A1 antibody (Middle Region)

5 Images

[Go to Product page](#)

Overview

Quantity:	100 µL
Target:	CYP1A1
Binding Specificity:	Middle Region
Reactivity:	Human, Mouse, Rat, Horse, Cow, Guinea Pig, Rabbit, Sheep, Dog, Zebrafish (Danio rerio)
Host:	Rabbit
Clonality:	Polyclonal
Conjugate:	This CYP1A1 antibody is un-conjugated
Application:	Western Blotting (WB), Immunohistochemistry (IHC)

Product Details

Immunogen:	The immunogen is a synthetic peptide directed towards the middle region of human CYP1A1
Sequence:	FKDLNEKFYS FMQKMVKEHY KTFEKGHIRD ITDSLIEHCQ EKQLDENANV
Predicted Reactivity:	Cow: 100%, Dog: 86%, Guinea Pig: 100%, Horse: 100%, Human: 100%, Mouse: 100%, Rabbit: 100%, Rat: 100%, Sheep: 100%, Zebrafish: 77%
Characteristics:	This is a rabbit polyclonal antibody against CYP1A1. It was validated on Western Blot using a cell lysate as a positive control.
Purification:	Affinity Purified

Target Details

Target:	CYP1A1
---------	--------

Target Details

Alternative Name: CYP1A1 ([CYP1A1 Products](#))

Background: CYP1A1 is a member of the cytochrome P450 superfamily of enzymes. The cytochrome P450 proteins are monooxygenases which catalyze many reactions involved in drug metabolism and synthesis of cholesterol, steroids and other lipids. This protein localizes to the endoplasmic reticulum and its expression is induced by some polycyclic aromatic hydrocarbons (PAHs), some of which are found in cigarette smoke. The enzyme's endogenous substrate is unknown, however, it is able to metabolize some PAHs to carcinogenic intermediates. CYP1A1 has been associated with lung cancer risk. This gene, CYP1A1, encodes a member of the cytochrome P450 superfamily of enzymes. The cytochrome P450 proteins are monooxygenases which catalyze many reactions involved in drug metabolism and synthesis of cholesterol, steroids and other lipids. This protein localizes to the endoplasmic reticulum and its expression is induced by some polycyclic aromatic hydrocarbons (PAHs), some of which are found in cigarette smoke. The enzyme's endogenous substrate is unknown, however, it is able to metabolize some PAHs to carcinogenic intermediates. The gene has been associated with lung cancer risk. A related family member, CYP1A2, is located approximately 25 kb away from CYP1A1 on chromosome 15. Sequence Note: The RefSeq transcript and protein were derived from genomic sequence to make the sequence consistent with the reference genome assembly. The genomic coordinates used for the transcript record were based on alignments. Publication Note: This RefSeq record includes a subset of the publications that are available for this gene. Please see the Entrez Gene record to access additional publications.

Alias Symbols: AHH, AHRR, CP11, CYP1, P1-450, P450-C, P450DX

Protein Interaction Partner: CMTM5, CYB5A,

Protein Size: 512

Molecular Weight: 58 kDa

Gene ID: 1543

NCBI Accession: [NM_000499](#), [NP_000490](#)

UniProt: [P04798](#)

Pathways: [Steroid Hormone Biosynthesis](#), [Regulation of Lipid Metabolism by PPARalpha](#)

Application Details

Application Notes: Optimal working dilutions should be determined experimentally by the investigator.

Comment: Antigen size: 512 AA

Restrictions: For Research Use only

Handling

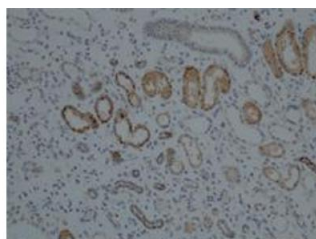
Format:	Liquid
Concentration:	Lot specific
Buffer:	Liquid. Purified antibody supplied in 1x PBS buffer with 0.09 % (w/v) sodium azide and 2 % sucrose.
Preservative:	Sodium azide
Precaution of Use:	This product contains Sodium azide: a POISONOUS AND HAZARDOUS SUBSTANCE which should be handled by trained staff only.
Handling Advice:	Avoid repeated freeze-thaw cycles.
Storage:	-20 °C
Storage Comment:	For short term use, store at 2-8°C up to 1 week. For long term storage, store at -20°C in small aliquots to prevent freeze-thaw cycles.

Images

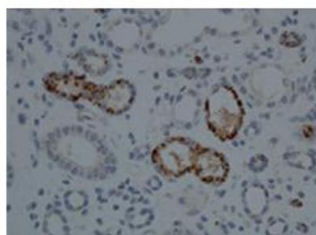


Western Blotting

Image 1. WB Suggested Anti-CYP1A1 Antibody Titration:
0.2-1 ug/ml Positive Control: Hela cell lysate



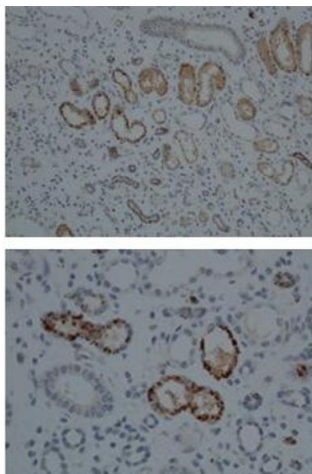
CYP1A1(ARP41404_P050)
Immunohistochemistry
Human kidney tissue
dilution: 1 to 100
Application data in forum



Submitted by:
Atif Ahmed
Children's Mercy Hospital and Clinic
Kansas City, MO
USA

Immunohistochemistry

Image 2. Sample Type: Human Kidney Dilution: 1:100



Immunohistochemistry

Image 3. Sample Type: Human Kidney Dilution: 1:100

Please check the [product details page](#) for more images. Overall 5 images are available for ABIN2776792.