

Datasheet for ABIN2776796
anti-SFTPb antibody (Middle Region)[Go to Product page](#)

3 Images

Overview

Quantity:	100 µL
Target:	SFTPb
Binding Specificity:	Middle Region
Reactivity:	Human, Mouse, Rat, Cow, Dog, Guinea Pig, Rabbit, Sheep
Host:	Rabbit
Clonality:	Polyclonal
Conjugate:	This SFTPb antibody is un-conjugated
Application:	Western Blotting (WB), Immunohistochemistry (IHC)

Product Details

Immunogen:	The immunogen is a synthetic peptide directed towards the middle region of human SFTPb
Sequence:	PGALQARPGP HTQDLSEQQF PIPLPYCWLC RALIKRIQAM IPKGALAVAV
Predicted Reactivity:	Cow: 86%, Dog: 100%, Guinea Pig: 100%, Human: 100%, Mouse: 92%, Rabbit: 85%, Rat: 100%, Sheep: 79%
Characteristics:	This is a rabbit polyclonal antibody against SFTPb. It was validated on Western Blot using a cell lysate as a positive control.
Purification:	Affinity Purified

Target Details

Target:	SFTPb
---------	-------

Target Details

Alternative Name: SFTPB ([SFTPB Products](#))

Background: SFTPB is the pulmonary-associated surfactant B protein (SPB), an amphipathic surfactant protein essential for lung function and homeostasis after birth. Pulmonary surfactant is a lipid-rich material that prevents lung collapse by lowering surface tension at the air-liquid interface in the alveoli of lung. SPB enhances the rate of spreading and increases the stability of surfactant monolayers in vitro. Surfactant is composed of phospholipids and other surfactant-associated proteins. See also SFTPA1, SFTPC, and SFTPD. The SFTPB gene encodes the pulmonary-associated surfactant B protein (SPB), an amphipathic surfactant protein essential for lung function and homeostasis after birth. Pulmonary surfactant is a lipid-rich material that prevents lung collapse by lowering surface tension at the air-liquid interface in the alveoli of lung. SPB enhances the rate of spreading and increases the stability of surfactant monolayers in vitro. Surfactant is composed of phospholipids and other surfactant-associated proteins (Clark et al., 1995 [PubMed 7644495]). See also SFTPA1 (MIM 178630), SFTPC (MIM 178620), and SFTPD (MIM 178635).[supplied by OMIM]. Publication Note: This RefSeq record includes a subset of the publications that are available for this gene. Please see the Entrez Gene record to access additional publications.

Alias Symbols: PSP-B, SFTB3, SFTP3, SMDP1, SP-B

Protein Interaction Partner: CTSH,

Protein Size: 381

Molecular Weight: 42 kDa

Gene ID: 6439

NCBI Accession: [NM_000542](#), [NP_000533](#)

UniProt: [B2RC55](#)

Application Details

Application Notes: Optimal working dilutions should be determined experimentally by the investigator.

Comment: Antigen size: 381 AA

Restrictions: For Research Use only

Handling

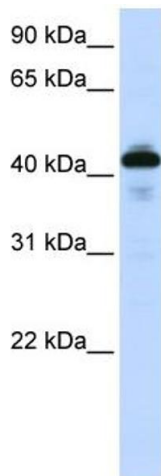
Format: Liquid

Concentration: Lot specific

Handling

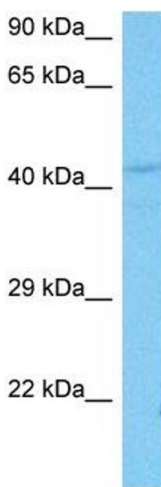
Buffer:	Liquid. Purified antibody supplied in 1x PBS buffer with 0.09 % (w/v) sodium azide and 2 % sucrose.
Preservative:	Sodium azide
Precaution of Use:	This product contains Sodium azide: a POISONOUS AND HAZARDOUS SUBSTANCE which should be handled by trained staff only.
Handling Advice:	Avoid repeated freeze-thaw cycles.
Storage:	-20 °C
Storage Comment:	For short term use, store at 2-8°C up to 1 week. For long term storage, store at -20°C in small aliquots to prevent freeze-thaw cycles.

Images



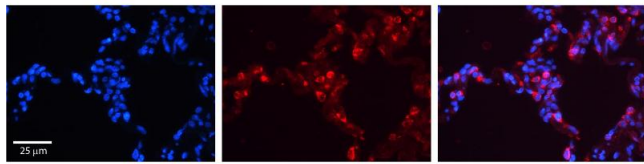
Western Blotting

Image 1. WB Suggested Anti-SFTPb Antibody Titration: 0.2-1 ug/ml ELISA Titer: 1:1562500 Positive Control: 721_B cell lysate



Western Blotting

Image 2. Host: Mouse Target Name: SFTPb Sample Tissue: Mouse Liver Antibody Dilution: 1ug/ml



Immunohistochemistry

Image 3. SFTPb antibody - middle region Formalin Fixed Paraffin Embedded Tissue: Human Lung Tissue Observed Staining: Cytoplasm and membrane of pneumocytes Primary Antibody Concentration: 1:600 Secondary Antibody: Donkey anti-Rabbit-Cy3 Secondary Antibody Concentration: 1:200 Magnification: 20X Exposure Time: 0.5 - 2.0 sec