

Datasheet for ABIN2776801
anti-CYP2E1 antibody (C-Term)



[Go to Product page](#)

3 Images

Overview

Quantity:	100 µL
Target:	CYP2E1
Binding Specificity:	C-Term
Reactivity:	Human, Mouse, Rat, Rabbit, Dog, Horse, Guinea Pig, Sheep, Cow
Host:	Rabbit
Clonality:	Polyclonal
Conjugate:	This CYP2E1 antibody is un-conjugated
Application:	Western Blotting (WB)

Product Details

Immunogen:	The immunogen is a synthetic peptide directed towards the C terminal region of human CYP2E1
Sequence:	QEFPDPEKFK PEHFLNENGK FKYSDFKPF STGKRVCAGE GLARMELFLL
Predicted Reactivity:	Cow: 79%, Dog: 86%, Guinea Pig: 92%, Horse: 79%, Human: 100%, Mouse: 92%, Rabbit: 93%, Rat: 92%, Sheep: 79%
Characteristics:	This is a rabbit polyclonal antibody against CYP2E1. It was validated on Western Blot using a cell lysate as a positive control.
Purification:	Affinity Purified

Target Details

Target:	CYP2E1
---------	--------

Target Details

Alternative Name:	CYP2E1 (CYP2E1 Products)
Background:	<p>CYP2E1 is a member of the cytochrome P450 superfamily of enzymes. The cytochrome P450 proteins are monooxygenases which catalyze many reactions involved in drug metabolism and synthesis of cholesterol, steroids and other lipids. This protein localizes to the endoplasmic reticulum and is induced by ethanol, the diabetic state, and starvation. The enzyme metabolizes both endogenous substrates, such as ethanol, acetone, and acetal, as well as exogenous substrates including benzene, carbon tetrachloride, ethylene glycol, and nitrosamines which are premutagens found in cigarette smoke. Due to its many substrates, this enzyme may be involved in such varied processes as gluconeogenesis, hepatic cirrhosis, diabetes, and cancer. This gene encodes a member of the cytochrome P450 superfamily of enzymes. The cytochrome P450 proteins are monooxygenases which catalyze many reactions involved in drug metabolism and synthesis of cholesterol, steroids and other lipids. This protein localizes to the endoplasmic reticulum and is induced by ethanol, the diabetic state, and starvation. The enzyme metabolizes both endogenous substrates, such as ethanol, acetone, and acetal, as well as exogenous substrates including benzene, carbon tetrachloride, ethylene glycol, and nitrosamines which are premutagens found in cigarette smoke. Due to its many substrates, this enzyme may be involved in such varied processes as gluconeogenesis, hepatic cirrhosis, diabetes, and cancer.</p> <p>Alias Symbols: CPE1, CYP2E, P450-J, P450C2E</p> <p>Protein Interaction Partner: UBC, ABCA5, LAMC3, NMI, PTN, POR, MAFG, GATM, ECHS1, CYB5A, AGXT2, RPL13A, CLU, STUB1, AMFR, FANCG,</p> <p>Protein Size: 493</p>

Molecular Weight:	54 kDa
Gene ID:	1571
NCBI Accession:	NM_000773 , NP_000764
UniProt:	P05181

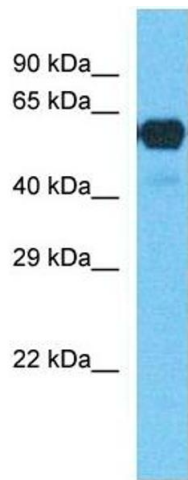
Application Details

Application Notes:	Optimal working dilutions should be determined experimentally by the investigator.
Comment:	Antigen size: 493 AA
Restrictions:	For Research Use only

Handling

Format:	Liquid
Concentration:	Lot specific
Buffer:	Liquid. Purified antibody supplied in 1x PBS buffer with 0.09 % (w/v) sodium azide and 2 % sucrose.
Preservative:	Sodium azide
Precaution of Use:	This product contains Sodium azide: a POISONOUS AND HAZARDOUS SUBSTANCE which should be handled by trained staff only.
Handling Advice:	Avoid repeated freeze-thaw cycles.
Storage:	-20 °C
Storage Comment:	For short term use, store at 2-8°C up to 1 week. For long term storage, store at -20°C in small aliquots to prevent freeze-thaw cycles.

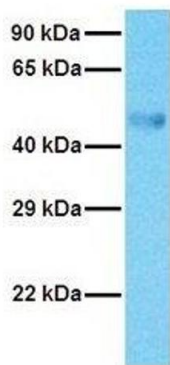
Images



Western Blotting

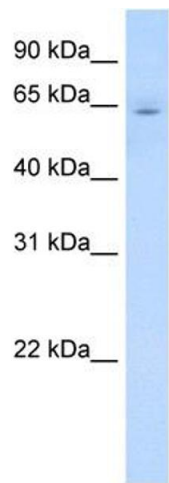
Image 1.

CYP2E1



Western Blotting

Image 2. Host: Rabbit Target Name: CYP2E1 Sample Tissue: Human Fetal Lung Antibody Dilution: 1.0ug/ml



Western Blotting

Image 3. WB Suggested Anti-CYP2E1 Antibody Titration:
0.2-1 ug/ml Positive Control: Human Liver