



[Go to Product page](#)

Datasheet for ABIN2776804

## anti-FOLR1 antibody (Middle Region)

5 Images

1 Publication

### Overview

Quantity:	100 µL
Target:	FOLR1
Binding Specificity:	Middle Region
Reactivity:	Human, Rat, Mouse, Cow, Dog, Horse, Rabbit, Guinea Pig
Host:	Rabbit
Clonality:	Polyclonal
Conjugate:	This FOLR1 antibody is un-conjugated
Application:	Western Blotting (WB), Immunohistochemistry (IHC)

### Product Details

Immunogen:	The immunogen is a synthetic peptide directed towards the middle region of human FOLR1
Sequence:	HFYFPTPTVL CNEIWTHSYK VSNYSRGSGR CIQMWFDPAQ GNPNEEVARF
Predicted Reactivity:	Cow: 93%, Dog: 100%, Guinea Pig: 93%, Horse: 100%, Human: 100%, Mouse: 100%, Rabbit: 100%, Rat: 100%
Characteristics:	This is a rabbit polyclonal antibody against FOLR1. It was validated on Western Blot using a cell lysate as a positive control.
Purification:	Affinity Purified

### Target Details

Target:	FOLR1
---------	-------

## Target Details

---

Alternative Name: FOLR1 ([FOLR1 Products](#))

---

Background: The protein encoded by this gene is a member of the folate receptor family. Members of this gene family bind folic acid and its reduced derivatives, and transport 5-methyltetrahydrofolate into cells. This gene product is a secreted protein that either anc

Alias Symbols: FBP, FOLR, FR-alpha, MOv18

Protein Interaction Partner: AGO2, NCAPH2, IRAK3, CUL3, PSMB2, IMPDH2, GSR, UBC, Poc1b, Cep76, Trim69, Dync1h1, Cdk1, Cbx1, LYN,

Protein Size: 257

---

Molecular Weight: 29 kDa

---

Gene ID: 2348

---

NCBI Accession: [NM\\_000802](#), [NP\\_000793](#)

---

UniProt: [P15328](#)

---

Pathways: [Dicarboxylic Acid Transport](#)

---

## Application Details

---

Application Notes: Optimal working dilutions should be determined experimentally by the investigator.

---

Comment: Antigen size: 257 AA

---

Restrictions: For Research Use only

---

## Handling

---

Format: Liquid

---

Concentration: Lot specific

---

Buffer: Liquid. Purified antibody supplied in 1x PBS buffer with 0.09 % (w/v) sodium azide and 2 % sucrose.

---

Preservative: Sodium azide

---

Precaution of Use: This product contains Sodium azide: a POISONOUS AND HAZARDOUS SUBSTANCE which should be handled by trained staff only.

---

Handling Advice: Avoid repeated freeze-thaw cycles.

---

Storage: -20 °C

---

Storage Comment: For short term use, store at 2-8°C up to 1 week. For long term storage, store at -20°C in small

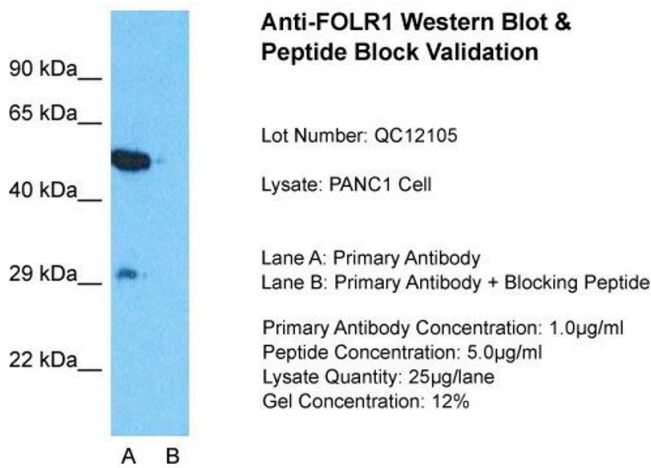
---

aliquots to prevent freeze-thaw cycles.

Publications

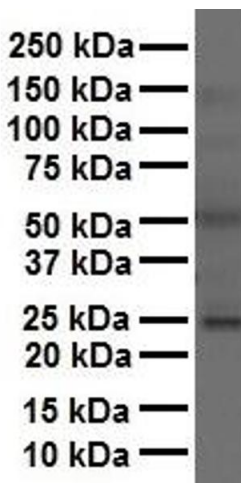
Product cited in: Gerhard, Wagner, Feingold, Shenmen, Grouse, Schuler, Klein, Old, Rasooly, Good, Guyer, Peck, Derge, Lipman, Collins, Jang, Sherry, Feolo, Misquitta, Lee, Rotmistrovsky, Greenhut, Schaefer, Buetow et al.: "The status, quality, and expansion of the NIH full-length cDNA project: the Mammalian Gene Collection (MGC). ..." in: **Genome research**, Vol. 14, Issue 10B, pp. 2121-7, (2004) ([PubMed](#)).

Images



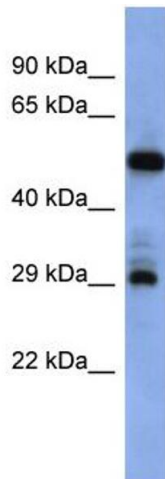
**Western Blotting**

**Image 1.** Host: Rabbit Target Name: FOLR1 Sample Type: PANC1 Whole Cell Lane A: Primary Antibody Lane B: Primary Antibody + Blocking Peptide Primary Antibody Concentration: 1ug/ml Peptide Concentration: 5ug/ml Lysate Quantity: 25ug/lane/Lane Gel Concentration: 0.12



**Western Blotting**

**Image 2.** WB Suggested Anti-FOLR1 antibody Titration: 1 ug/mL Sample Type: Human liver



### Western Blotting

**Image 3.** WB Suggested Anti-FOLR1 Antibody Titration: 0.2-1 ug/ml ELISA Titer: 1:62500 Positive Control: PANC1 cell lysate FOLR1 is supported by BioGPS gene expression data to be expressed in PANC1

Please check the [product details page](#) for more images. Overall 5 images are available for ABIN2776804.