

Datasheet for ABIN2776805
anti-PLA2G5 antibody (N-Term)[Go to Product page](#)

2 Images

Overview

Quantity:	100 µL
Target:	PLA2G5
Binding Specificity:	N-Term
Reactivity:	Mouse, Rat, Human, Cow, Dog, Horse, Rabbit
Host:	Rabbit
Clonality:	Polyclonal
Conjugate:	This PLA2G5 antibody is un-conjugated
Application:	Western Blotting (WB)

Product Details

Immunogen:	The immunogen is a synthetic peptide directed towards the N terminal region of human PLA2G5
Sequence:	MKGLLPLAWF LACSVPAVQG GLLDLKSMIE KVTGKNALTN YGFYGCYCGW
Predicted Reactivity:	Cow: 86%, Dog: 85%, Horse: 79%, Human: 100%, Mouse: 86%, Rabbit: 85%, Rat: 86%
Characteristics:	This is a rabbit polyclonal antibody against PLA2G5. It was validated on Western Blot using a cell lysate as a positive control.
Purification:	Affinity Purified

Target Details

Target:	PLA2G5
---------	--------

Target Details

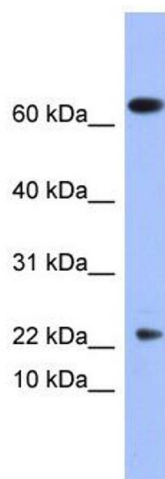
Alternative Name:	PLA2G5 (PLA2G5 Products)
Background:	<p>This gene is a member of the secretory phospholipase A2 family. It is located in a tightly-linked cluster of secretory phospholipase A2 genes on chromosome 1. The encoded enzyme catalyzes the hydrolysis of membrane phospholipids to generate lysophospholip</p> <p>Alias Symbols: DKFZp686C2294, GV-PLA2, MGC46205, PLA2-10, hVPLA(2), FRFB</p> <p>Protein Interaction Partner: PLA2G4A,</p> <p>Protein Size: 138</p>
Molecular Weight:	14 kDa
Gene ID:	5322
NCBI Accession:	NM_000929 , NP_000920
UniProt:	P39877
Pathways:	Inositol Metabolic Process

Application Details

Application Notes:	Optimal working dilutions should be determined experimentally by the investigator.
Comment:	Antigen size: 138 AA
Restrictions:	For Research Use only

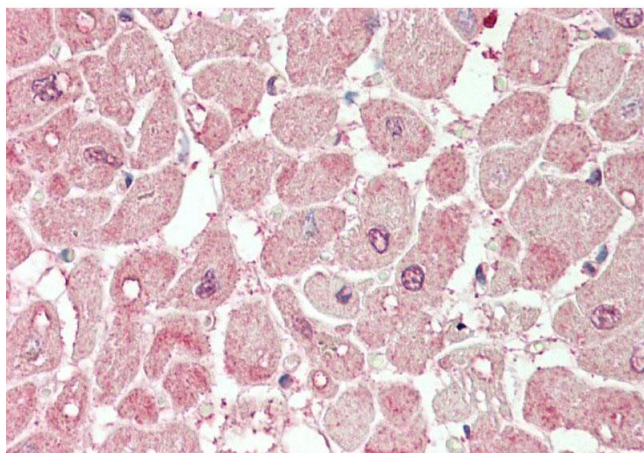
Handling

Format:	Liquid
Concentration:	Lot specific
Buffer:	Liquid. Purified antibody supplied in 1x PBS buffer with 0.09 % (w/v) sodium azide and 2 % sucrose.
Preservative:	Sodium azide
Precaution of Use:	This product contains Sodium azide: a POISONOUS AND HAZARDOUS SUBSTANCE which should be handled by trained staff only.
Handling Advice:	Avoid repeated freeze-thaw cycles.
Storage:	-20 °C
Storage Comment:	For short term use, store at 2-8°C up to 1 week. For long term storage, store at -20°C in small aliquots to prevent freeze-thaw cycles.



Western Blotting

Image 1. WB Suggested Anti-PLA2G5 Antibody Titration: 0.2-1 ug/ml ELISA Titer: 1:312500 Positive Control: Human Thymus



Immunohistochemistry

Image 2. Rabbit Anti-PLA2G5 antibody Formalin Fixed Paraffin Embedded Tissue: Human Heart Primary antibody Concentration: 1:100 Secondary Antibody: Donkey anti-Rabbit-Cy3 Secondary Antibody Concentration: 1:200 Magnification: 20x Exposure Time: 0.5-2.0sec