

Datasheet for ABIN2776808
anti-Claudin 18 antibody (C-Term)



[Go to Product page](#)

3 Images

Overview

Quantity:	100 µL
Target:	Claudin 18 (CLDN18)
Binding Specificity:	C-Term
Reactivity:	Human, Mouse, Rat, Cow, Dog, Horse, Rabbit, Guinea Pig
Host:	Rabbit
Clonality:	Polyclonal
Conjugate:	This Claudin 18 antibody is un-conjugated
Application:	Western Blotting (WB)

Product Details

Immunogen:	The immunogen is a synthetic peptide directed towards the C terminal region of human CLDN18
Sequence:	PEETNYKAVS YHASGHSVAY KPGGFKASTG FGSNTKNKKI YDGGARTEDE
Predicted Reactivity:	Cow: 85%, Dog: 79%, Guinea Pig: 92%, Horse: 100%, Human: 100%, Mouse: 100%, Rabbit: 92%, Rat: 100%
Characteristics:	This is a rabbit polyclonal antibody against CLDN18. It was validated on Western Blot.
Purification:	Affinity Purified

Target Details

Target:	Claudin 18 (CLDN18)
---------	---------------------

Target Details

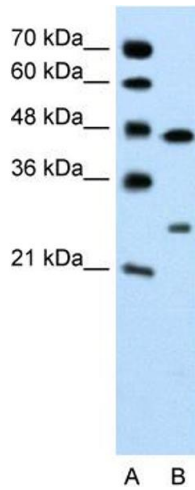
Alternative Name:	CLDN18 (CLDN18 Products)
Background:	<p>CLDN18 belongs to the large claudin family of proteins, which form tight junction strands in epithelial cells. CLDN18 belongs to the large claudin family of proteins, which form tight junction strands in epithelial cells (Niimi et al., 2001). [supplied by OMIM].</p> <p>Alias Symbols: UNQ778/PRO1572, DKFZp564B2062, SFTA5, SFTPJ</p> <p>Protein Size: 261</p>
Molecular Weight:	28 kDa
Gene ID:	51208
NCBI Accession:	NM_001002026 , NP_001002026
UniProt:	P56856
Pathways:	Cell-Cell Junction Organization , Hepatitis C

Application Details

Application Notes:	Optimal working dilutions should be determined experimentally by the investigator.
Comment:	Antigen size: 261 AA
Restrictions:	For Research Use only

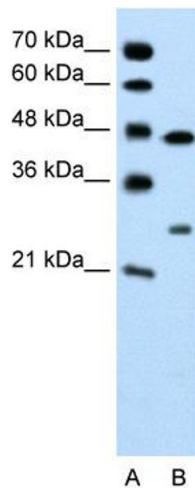
Handling

Format:	Liquid
Concentration:	Lot specific
Buffer:	Liquid. Purified antibody supplied in 1x PBS buffer with 0.09 % (w/v) sodium azide and 2 % sucrose.
Preservative:	Sodium azide
Precaution of Use:	This product contains Sodium azide: a POISONOUS AND HAZARDOUS SUBSTANCE which should be handled by trained staff only.
Handling Advice:	Avoid repeated freeze-thaw cycles.
Storage:	-20 °C
Storage Comment:	For short term use, store at 2-8°C up to 1 week. For long term storage, store at -20°C in small aliquots to prevent freeze-thaw cycles.



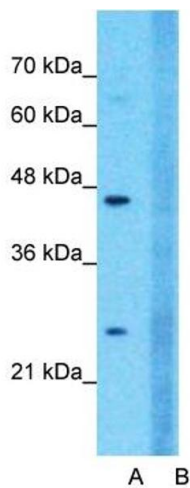
Western Blotting

Image 1. WB Suggested Anti-CLDN18 Antibody Titration: 0.2-1 ug/ml ELISA Titer: 1:312500 Positive Control: Jurkat cell lysate



Western Blotting

Image 2. WB Suggested Anti-CLDN18 Antibody Titration: 0.2-1 ug/ml
ELISA Titer: 1:312500
Positive Control: Jurkat cell lysate



Western Blotting

Image 3. Host: Rabbit Target Name: CLDN18 Sample Type: Jurkat Lane A: Primary Antibody Lane B: Primary Antibody + Blocking Peptide Primary Antibody Concentration: 1ug/ml Peptide Concentration: 5ug/ml Lysate Quantity: 25ug/lane/lane Gel Concentration: 0.12