

Datasheet for ABIN2776815
anti-SLC13A3 antibody (Middle Region)[Go to Product page](#)

2 Images

Overview

Quantity:	100 µL
Target:	SLC13A3
Binding Specificity:	Middle Region
Reactivity:	Human, Dog, Mouse, Rat, Rabbit, Cow, Horse, Zebrafish (Danio rerio), Pig
Host:	Rabbit
Clonality:	Polyclonal
Conjugate:	This SLC13A3 antibody is un-conjugated
Application:	Western Blotting (WB), Immunohistochemistry (IHC)

Product Details

Immunogen:	The immunogen is a synthetic peptide directed towards the middle region of human SLC13A3
Sequence:	GLSFRGWRKN KSEIRTN AED RARAVIREEY QNLGPIKFAE QAVFILFCMF
Predicted Reactivity:	Cow: 86%, Dog: 93%, Horse: 93%, Human: 100%, Mouse: 92%, Pig: 85%, Rabbit: 93%, Rat: 92%, Zebrafish: 77%
Characteristics:	This is a rabbit polyclonal antibody against SLC13A3. It was validated on Western Blot and immunohistochemistry.
Purification:	Protein A purified

Target Details

Target:	SLC13A3
---------	---------

Target Details

Alternative Name:	SLC13A3 (SLC13A3 Products)
Background:	<p>Mammalian sodium-dicarboxylate cotransporters transport succinate and other Krebs cycle intermediates. They fall into 2 categories based on their substrate affinity: low affinity and high affinity. Both the low- and high-affinity transporters play an important role in the handling of citrate by the kidneys. SLC13A3 represents the high-affinity form. Mammalian sodium-dicarboxylate cotransporters transport succinate and other Krebs cycle intermediates. They fall into 2 categories based on their substrate affinity: low affinity and high affinity. Both the low- and high-affinity transporters play an important role in the handling of citrate by the kidneys. The protein encoded by this gene represents the high-affinity form. Alternatively spliced transcript variants encoding different isoforms have been found for this gene, although the full-length nature of some of them have not been characterized yet.</p> <p>Alias Symbols: NADC3, SDCT2</p> <p>Protein Size: 555</p>
Molecular Weight:	61 kDa
Gene ID:	64849
NCBI Accession:	NM_001011554 , NP_001011554
UniProt:	Q8WWT9
Pathways:	Dicarboxylic Acid Transport

Application Details

Application Notes:	Optimal working dilutions should be determined experimentally by the investigator.
Comment:	Antigen size: 555 AA
Restrictions:	For Research Use only

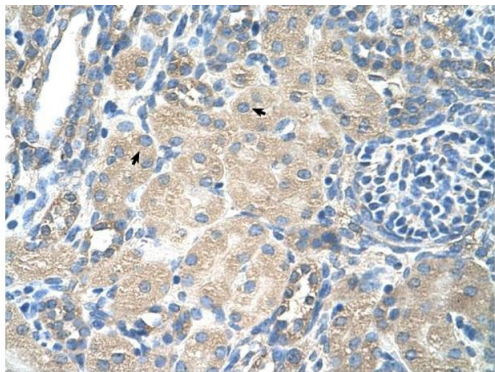
Handling

Format:	Liquid
Concentration:	Lot specific
Buffer:	Liquid. Purified antibody supplied in 1x PBS buffer with 0.09 % (w/v) sodium azide and 2 % sucrose.
Preservative:	Sodium azide
Precaution of Use:	This product contains Sodium azide: a POISONOUS AND HAZARDOUS SUBSTANCE which

Handling

	should be handled by trained staff only.
Handling Advice:	Avoid repeated freeze-thaw cycles.
Storage:	-20 °C
Storage Comment:	For short term use, store at 2-8°C up to 1 week. For long term storage, store at -20°C in small aliquots to prevent freeze-thaw cycles.

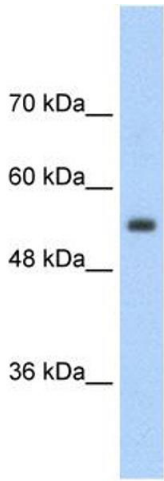
Images



Rabbit Anti-SLC13A3 Antibody
Catalog Number: ARP41439
Lot Number: QC12179
Paraffin Embedded Tissue: Human Kidney
Cells with Positive label: Epithelial cells of renal tubule (Indicated with Arrows)
Antibody Concentration: 4.0-8.0 µg/ml
Magnification: 400X

Immunohistochemistry

Image 1. Rabbit Anti-SLC13A3 Antibody Paraffin Embedded Tissue: Human Kidney Cellular Data: Epithelial cells of renal tubule Antibody Concentration: 4.0-8.0 ug/ml Magnification: 400X



Western Blotting

Image 2. WB Suggested Anti-SLC13A3 Antibody Titration: 2.5ug/ml Positive Control: Jurkat cell lysate