

Datasheet for ABIN2776816  
**anti-SLC13A3 antibody (C-Term)**[Go to Product page](#)

## 1 Image

## Overview

Quantity:	100 µL
Target:	SLC13A3
Binding Specificity:	C-Term
Reactivity:	Human, Dog, Mouse, Rat, Rabbit, Cow, Guinea Pig, Horse
Host:	Rabbit
Clonality:	Polyclonal
Conjugate:	This SLC13A3 antibody is un-conjugated
Application:	Western Blotting (WB)

## Product Details

Immunogen:	The immunogen is a synthetic peptide directed towards the C terminal region of human SLC13A3
Sequence:	GLSVWIGGQL HPLENVPPAL AVLLITVVIA FFTEFASNTA TIIIFLPVLA
Predicted Reactivity:	Cow: 92%, Dog: 100%, Guinea Pig: 100%, Horse: 100%, Human: 100%, Mouse: 92%, Rabbit: 100%, Rat: 100%
Characteristics:	This is a rabbit polyclonal antibody against SLC13A3. It was validated on Western Blot.
Purification:	Affinity Purified

## Target Details

Target:	SLC13A3
---------	---------

## Target Details

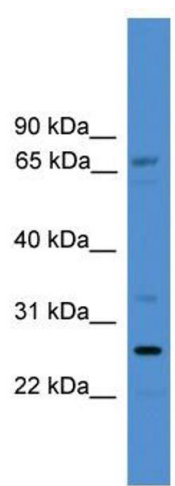
Alternative Name:	SLC13A3 ( <a href="#">SLC13A3 Products</a> )
Background:	<p>Mammalian sodium-dicarboxylate cotransporters transport succinate and other Krebs cycle intermediates. They fall into 2 categories based on their substrate affinity: low affinity and high affinity. Both the low- and high-affinity transporters play an important role in the handling of citrate by the kidneys. SLC13A3 represents the high-affinity form.</p> <p>Alias Symbols: NADC3, SDCT2</p> <p>Protein Size: 555</p>
Molecular Weight:	62 kDa
Gene ID:	64849
NCBI Accession:	<a href="#">NM_001011554</a> , <a href="#">NP_001011554</a>
UniProt:	<a href="#">A8MPP9</a>
Pathways:	<a href="#">Dicarboxylic Acid Transport</a>

## Application Details

Application Notes:	Optimal working dilutions should be determined experimentally by the investigator.
Comment:	Antigen size: 555 AA
Restrictions:	For Research Use only

## Handling

Format:	Liquid
Concentration:	Lot specific
Buffer:	Liquid. Purified antibody supplied in 1x PBS buffer with 0.09 % (w/v) sodium azide and 2 % sucrose.
Preservative:	Sodium azide
Precaution of Use:	This product contains Sodium azide: a POISONOUS AND HAZARDOUS SUBSTANCE which should be handled by trained staff only.
Handling Advice:	Avoid repeated freeze-thaw cycles.
Storage:	-20 °C
Storage Comment:	For short term use, store at 2-8°C up to 1 week. For long term storage, store at -20°C in small aliquots to prevent freeze-thaw cycles.



Western Blotting

**Image 1.** WB Suggested Anti-SLC13A3 Antibody Titration:  
0.2-1 ug/ml ELISA Titer: 1:312500 Positive Control: ACHN  
cell lysate