

Datasheet for ABIN2776822
anti-PRPS2 antibody (Middle Region)[Go to Product page](#)

2 Images

Overview

Quantity:	100 µL
Target:	PRPS2
Binding Specificity:	Middle Region
Reactivity:	Human, Rat, Mouse, Dog, Guinea Pig, Cow, Zebrafish (Danio rerio), Horse, Rabbit
Host:	Rabbit
Clonality:	Polyclonal
Conjugate:	This PRPS2 antibody is un-conjugated
Application:	Western Blotting (WB), Immunohistochemistry (IHC)

Product Details

Immunogen:	The immunogen is a synthetic peptide directed towards the middle region of human PRPS2
Sequence:	VSPDAGGAKR VTSIADRLNV EFALIHKERK KANEVDRMVL VGDVKDRVAI
Predicted Reactivity:	Cow: 100%, Dog: 100%, Guinea Pig: 100%, Horse: 100%, Human: 100%, Mouse: 100%, Rabbit: 100%, Rat: 100%, Zebrafish: 100%
Characteristics:	This is a rabbit polyclonal antibody against PRPS2. It was validated on Western Blot and immunohistochemistry.
Purification:	Affinity Purified

Target Details

Target:	PRPS2
---------	-------

Target Details

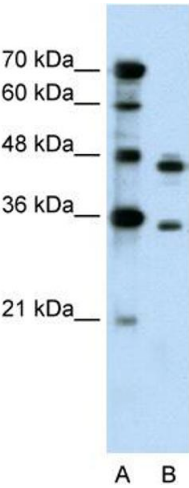
Alternative Name:	PRPS2 (PRPS2 Products)
Background:	<p>The function remains unknown.</p> <p>Alias Symbols: PRS II, PRSII</p> <p>Protein Interaction Partner: NOTCH2NL, WDYHV1, PRPSAP1, PRPS2, PRPS1, FAM96A, SUMO2, UBC, ARMC9, GTF2I, BAG3, FN1, C18orf8, ELAVL1,</p> <p>Protein Size: 318</p>
Molecular Weight:	35 kDa
Gene ID:	5634
NCBI Accession:	NM_002765 , NP_002756
UniProt:	P11908
Pathways:	Ribonucleoside Biosynthetic Process

Application Details

Application Notes:	Optimal working dilutions should be determined experimentally by the investigator.
Comment:	Antigen size: 318 AA
Restrictions:	For Research Use only

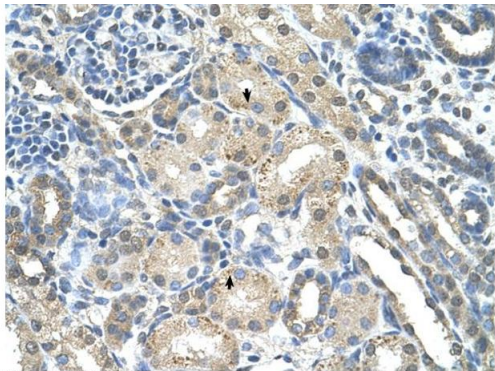
Handling

Format:	Liquid
Concentration:	Lot specific
Buffer:	Liquid. Purified antibody supplied in 1x PBS buffer with 0.09 % (w/v) sodium azide and 2 % sucrose.
Preservative:	Sodium azide
Precaution of Use:	This product contains Sodium azide: a POISONOUS AND HAZARDOUS SUBSTANCE which should be handled by trained staff only.
Handling Advice:	Avoid repeated freeze-thaw cycles.
Storage:	-20 °C
Storage Comment:	For short term use, store at 2-8°C up to 1 week. For long term storage, store at -20°C in small aliquots to prevent freeze-thaw cycles.



Western Blotting

Image 1. WB Suggested Anti-PRPS2 Antibody Titration: 0.2-1 ug/ml Positive Control: HepG2 cell lysate



Immunohistochemistry

Image 2. Rabbit Anti-PRPS2 Antibody Paraffin Embedded Tissue: Human Kidney Cellular Data: Epithelial cells of renal tubule Antibody Concentration: 4.0-8.0 ug/ml Magnification: 400X

Rabbit Anti-PRPS2 Antibody
Catalog Number: ARP41448
Lot Number: QC12187
Paraffin Embedded Tissue: Human Kidney
Cells with Positive label: Epithelial cells of renal tubule (Indicated with Arrows)
Antibody Concentration: 4.0-8.0 µg/ml
Magnification: 400X