

Datasheet for ABIN2776831
anti-RAGE antibody (N-Term)[Go to Product page](#)

4 Images

Overview

Quantity:	100 µL
Target:	RAGE (AGER)
Binding Specificity:	N-Term
Reactivity:	Human, Mouse, Rat, Cow, Dog, Guinea Pig, Rabbit, Horse, Pig
Host:	Rabbit
Clonality:	Polyclonal
Conjugate:	This RAGE antibody is un-conjugated
Application:	Western Blotting (WB)

Product Details

Immunogen:	The immunogen is a synthetic peptide directed towards the N terminal region of human AGER
Sequence:	FLPAVGIQDE GIFRCQAMNR NGKETKSNYR VRVYQIPGKP EIVDSASELT
Specificity:	The immunizing peptide sequence is 100 % homologous to all four isoforms of AGER.
Predicted Reactivity:	Cow: 100%, Dog: 92%, Guinea Pig: 86%, Horse: 93%, Human: 100%, Mouse: 100%, Pig: 93%, Rabbit: 100%, Rat: 100%
Characteristics:	This is a rabbit polyclonal antibody against AGER. It was validated on Western Blot using a cell lysate as a positive control.
Purification:	Affinity Purified

Target Details

Target:	RAGE (AGER)
Alternative Name:	AGER (AGER Products)
Background:	<p>AGER mediates interactions of advanced glycosylation end products (AGE). These are nonenzymatically glycosylated proteins which accumulate in vascular tissue in aging and at an accelerated rate in diabetes. It is receptor for amyloid beta peptide.</p> <p>Alias Symbols: MGC22357, RAGE</p> <p>Protein Size: 342</p>
Molecular Weight:	36 kDa
Gene ID:	177
NCBI Accession:	NM_172197 , NP_751947
UniProt:	Q15109
Pathways:	Carbohydrate Homeostasis , Toll-Like Receptors Cascades , Smooth Muscle Cell Migration , S100 Proteins

Application Details

Application Notes:	Optimal working dilutions should be determined experimentally by the investigator.
Comment:	Antigen size: 342 AA
Restrictions:	For Research Use only

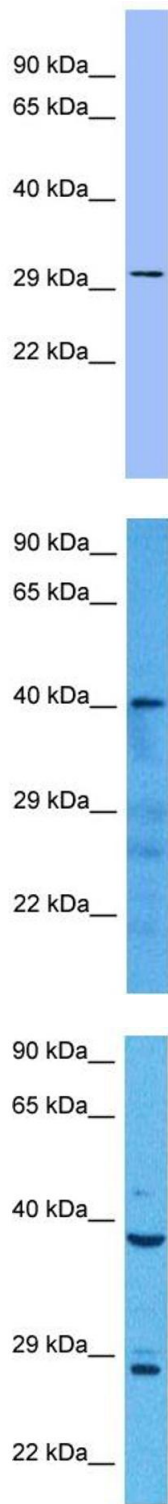
Handling

Format:	Liquid
Concentration:	Lot specific
Buffer:	Liquid. Purified antibody supplied in 1x PBS buffer with 0.09 % (w/v) sodium azide and 2 % sucrose.
Preservative:	Sodium azide
Precaution of Use:	This product contains Sodium azide: a POISONOUS AND HAZARDOUS SUBSTANCE which should be handled by trained staff only.
Handling Advice:	Avoid repeated freeze-thaw cycles.
Storage:	-20 °C

Handling

Storage Comment: For short term use, store at 2-8°C up to 1 week. For long term storage, store at -20°C in small aliquots to prevent freeze-thaw cycles.

Images



Western Blotting

Image 1. WB Suggested Anti-AGER Antibody Titration: 0.2-1 ug/ml ELISA Titer: 1:62500 Positive Control: THP-1 cell lysate

Western Blotting

Image 2. Host: Mouse Target Name: AGER Sample Tissue: Mouse Pancreas Antibody Dilution: 1ug/ml

Western Blotting

Image 3. Host: Rabbit Target Name: AGER Sample Tissue: Human MCF7 Whole Cell Antibody Dilution: 1ug/ml

Please check the [product details page](#) for more images. Overall 4 images are available for ABIN2776831.