



[Go to Product page](#)

Datasheet for ABIN2776843

anti-Desmin antibody (Middle Region)

4 Images

Overview

| | |
|----------------------|--|
| Quantity: | 100 µL |
| Target: | Desmin (DES) |
| Binding Specificity: | Middle Region |
| Reactivity: | Human, Mouse, Rat, Dog, Rabbit, Cow, Horse, Guinea Pig |
| Host: | Rabbit |
| Clonality: | Polyclonal |
| Conjugate: | This Desmin antibody is un-conjugated |
| Application: | Western Blotting (WB) |

Product Details

| | |
|-----------------------|---|
| Immunogen: | The immunogen is a synthetic peptide directed towards the middle region of human DES |
| Sequence: | MALDVEIATY RKLLEGEESR INLPIQTYSA LNFRETSPEQ RGSEVHTKKT |
| Predicted Reactivity: | Cow: 100%, Dog: 100%, Guinea Pig: 100%, Horse: 100%, Human: 100%, Mouse: 100%, Rabbit: 100%, Rat: 100% |
| Characteristics: | This is a rabbit polyclonal antibody against DES. It was validated on Western Blot using a cell lysate as a positive control. |
| Purification: | Affinity Purified |

Target Details

| | |
|---------|--------------|
| Target: | Desmin (DES) |
|---------|--------------|

Target Details

Alternative Name: [DES \(DES Products\)](#)

Background: DES is a muscle-specific class III intermediate filament. Homopolymers of this protein form a stable intracytoplasmic filamentous network connecting myofibrils to each other and to the plasma membrane. Mutations in its gene are associated with desmin-related myopathy, a familial cardiac and skeletal myopathy (CSM), and with distal myopathies. This gene encodes a muscle-specific class III intermediate filament. Homopolymers of this protein form a stable intracytoplasmic filamentous network connecting myofibrils to each other and to the plasma membrane. Mutations in this gene are associated with desmin-related myopathy, a familial cardiac and skeletal myopathy (CSM), and with distal myopathies. Publication Note: This RefSeq record includes a subset of the publications that are available for this gene. Please see the Entrez Gene record to access additional publications.

Alias Symbols: [CMD1I](#), [CSM1](#), [CSM2](#), [FLJ12025](#), [FLJ39719](#), [FLJ41013](#), [FLJ41793](#)

Protein Interaction Partner: [PPP1R18](#), [UBE2I](#), [EHHADH](#), [TRIM63](#), [TRIM55](#), [UBC](#), [YWHAQ](#), [MAPKAPK2](#), [CAPN1](#), [MLH1](#), [AURKB](#), [HADHB](#), [MYL6](#), [JUP](#), [HSP90AA5P](#), [HNRNPUL1](#), [CCT7](#), [SNRNP70](#), [RPL29](#), [RPL17](#), [UBD](#), [CRYAB](#), [SHBG](#), [SP1](#), [ITSN1](#), [NEB](#), [PLEKHA5](#), [SYNC](#), [TRIM7](#), [SYNM](#), [ROCK1](#), [PKD1](#), [SPTAN1](#), [S100B](#), [S100A1](#), [DSP](#),

Protein Size: 470

Molecular Weight: 53 kDa

Gene ID: 1674

NCBI Accession: [NM_001927](#), [NP_001918](#)

UniProt: [P17661](#)

Application Details

Application Notes: Optimal working dilutions should be determined experimentally by the investigator.

Comment: Antigen size: 470 AA

Restrictions: For Research Use only

Handling

Format: Liquid

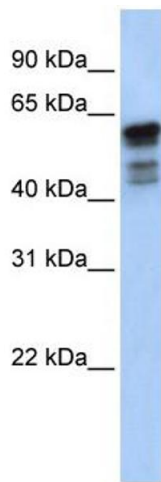
Concentration: Lot specific

Buffer: Liquid. Purified antibody supplied in 1x PBS buffer with 0.09 % (w/v) sodium azide and 2 % sucrose.

Handling

| | |
|--------------------|---|
| Preservative: | Sodium azide |
| Precaution of Use: | This product contains Sodium azide: a POISONOUS AND HAZARDOUS SUBSTANCE which should be handled by trained staff only. |
| Handling Advice: | Avoid repeated freeze-thaw cycles. |
| Storage: | -20 °C |
| Storage Comment: | For short term use, store at 2-8°C up to 1 week. For long term storage, store at -20°C in small aliquots to prevent freeze-thaw cycles. |

Images



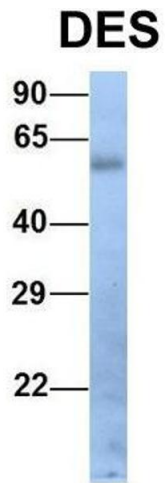
Western Blotting

Image 1. WB Suggested Anti-DES Antibody Titration: 0.2-1 ug/ml ELISA Titer: 1:1562500 Positive Control: Human Muscle



Western Blotting

Image 2. Host: Mouse Target Name: DES Sample Tissue: Mouse Testis Antibody Dilution: 1ug/ml



Western Blotting

Image 3. Host: Rabbit Target Name: DES Sample Type:
Human Fetal Lung Antibody Dilution: 1.0ug/ml

Please check the [product details page](#) for more images. Overall 4 images are available for ABIN2776843.