

Datasheet for ABIN2776859

**anti-Surfactant Protein C antibody (N-Term)****3** Images[Go to Product page](#)

## Overview

Quantity:	100 µL
Target:	Surfactant Protein C (SFTPC)
Binding Specificity:	N-Term
Reactivity:	Human, Mouse, Rat, Dog, Guinea Pig, Horse, Rabbit, Sheep
Host:	Rabbit
Clonality:	Polyclonal
Conjugate:	This Surfactant Protein C antibody is un-conjugated
Application:	Western Blotting (WB), Immunohistochemistry (IHC)

## Product Details

Immunogen:	The immunogen is a synthetic peptide directed towards the N terminal region of human SFTPC
Sequence:	MDVGSKEVLM ESPPDYSAAP RGRFGIPCCP VHLKRLLIIV VVVVLIVVI
Predicted Reactivity:	Dog: 100%, Guinea Pig: 86%, Horse: 100%, Human: 100%, Mouse: 79%, Rabbit: 100%, Rat: 100%, Sheep: 85%
Characteristics:	This is a rabbit polyclonal antibody against SFTPC. It was validated on Western Blot using a cell lysate as a positive control.
Purification:	Affinity Purified

## Target Details

Target:	Surfactant Protein C (SFTPC)
---------	------------------------------

## Target Details

Alternative Name:	SFTPC ( <a href="#">SFTPC Products</a> )
Background:	<p>This gene encodes the pulmonary-associated surfactant protein C (SPC), an extremely hydrophobic surfactant protein essential for lung function and homeostasis after birth.</p> <p>Pulmonary surfactant is a surface-active lipoprotein complex composed of 90 % lipids</p> <p>Alias Symbols: PSP-C, SFTP2, SMDP2, SP-C</p> <p>Protein Interaction Partner: SYNE4, TMEM79, SEC22A, SEC61G, SFTPC, CXCL9, VCP, DNAJB9, HSPA5, DNAJC10, TMEM67, WWP2, WWP1, PQBP1, NEDD4,</p> <p>Protein Size: 197</p>
Molecular Weight:	21 kDa
Gene ID:	6440
NCBI Accession:	<a href="#">NM_003018</a> , <a href="#">NP_003009</a>
UniProt:	<a href="#">P11686</a>

## Application Details

Application Notes:	Optimal working dilutions should be determined experimentally by the investigator.
Comment:	Antigen size: 197 AA
Restrictions:	For Research Use only

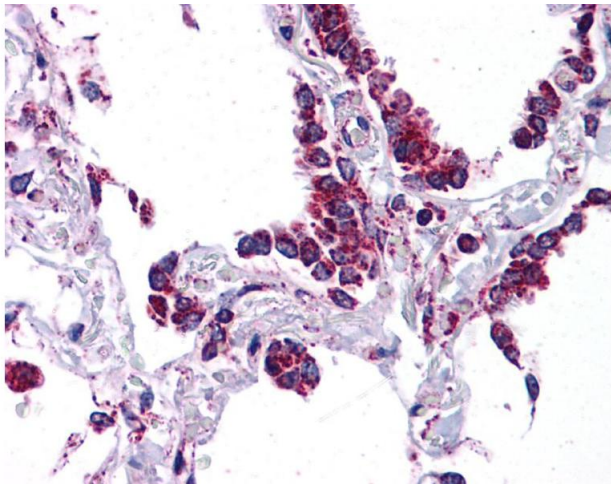
## Handling

Format:	Liquid
Concentration:	Lot specific
Buffer:	Liquid. Purified antibody supplied in 1x PBS buffer with 0.09 % (w/v) sodium azide and 2 % sucrose.
Preservative:	Sodium azide
Precaution of Use:	This product contains Sodium azide: a POISONOUS AND HAZARDOUS SUBSTANCE which should be handled by trained staff only.
Handling Advice:	Avoid repeated freeze-thaw cycles.
Storage:	-20 °C
Storage Comment:	For short term use, store at 2-8°C up to 1 week. For long term storage, store at -20°C in small aliquots to prevent freeze-thaw cycles.



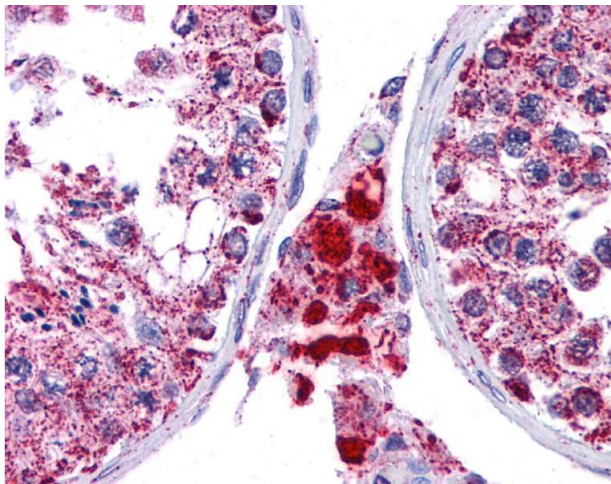
Western Blotting

**Image 1.** WB Suggested Anti-SFTPC Antibody Titration: 0.2-1 ug/ml ELISA Titer: 1:312500 Positive Control: COLO205 cell lysate



Immunohistochemistry

**Image 2.**



Immunohistochemistry

**Image 3.**