

Datasheet for ABIN2776861
anti-SLC22A1 antibody (N-Term)

3 Images

[Go to Product page](#)

Overview

Quantity:	100 µL
Target:	SLC22A1
Binding Specificity:	N-Term
Reactivity:	Human, Mouse, Rat, Dog, Cow, Rabbit, Guinea Pig, Horse
Host:	Rabbit
Clonality:	Polyclonal
Conjugate:	This SLC22A1 antibody is un-conjugated
Application:	Western Blotting (WB), Immunohistochemistry (IHC)

Product Details

Immunogen:	The immunogen is a synthetic peptide directed towards the N terminal region of human SLC22A1
Sequence:	LSCVDPLASL ATNRSHLPLG PCQDGWVYDT PGSSIVTEFN LVCADSWKLD
Predicted Reactivity:	Cow: 100%, Dog: 100%, Guinea Pig: 100%, Horse: 100%, Human: 100%, Mouse: 100%, Rabbit: 100%, Rat: 100%
Characteristics:	This is a rabbit polyclonal antibody against SLC22A1. It was validated on Western Blot and immunohistochemistry.
Purification:	Protein A purified

Target Details

Target:	SLC22A1
---------	---------

Target Details

Alternative Name:	SLC22A1 (SLC22A1 Products)
Background:	<p>Polyspecific organic cation transporters in the liver, kidney, intestine, and other organs are critical for elimination of many endogenous small organic cations as well as a wide array of drugs and environmental toxins. SLC22A1 contains twelve putative transmembrane domains and is a plasma integral membrane protein. Polyspecific organic cation transporters in the liver, kidney, intestine, and other organs are critical for elimination of many endogenous small organic cations as well as a wide array of drugs and environmental toxins. This gene is one of three similar cation transporter genes located in a cluster on chromosome 6. The encoded protein contains twelve putative transmembrane domains and is a plasma integral membrane protein. Two transcript variants encoding two different isoforms have been found for this gene, but only the longer variant encodes a functional transporter.</p> <p>Alias Symbols: HOCT1, OCT1, oct1_cds</p> <p>Protein Interaction Partner: CERS2, POU2AF1,</p> <p>Protein Size: 554</p>
Molecular Weight:	61 kDa
Gene ID:	6580
NCBI Accession:	NM_003057 , NP_003048
UniProt:	Q9NQD4
Pathways:	Hormone Transport

Application Details

Application Notes:	Optimal working dilutions should be determined experimentally by the investigator.
Comment:	Antigen size: 554 AA
Restrictions:	For Research Use only

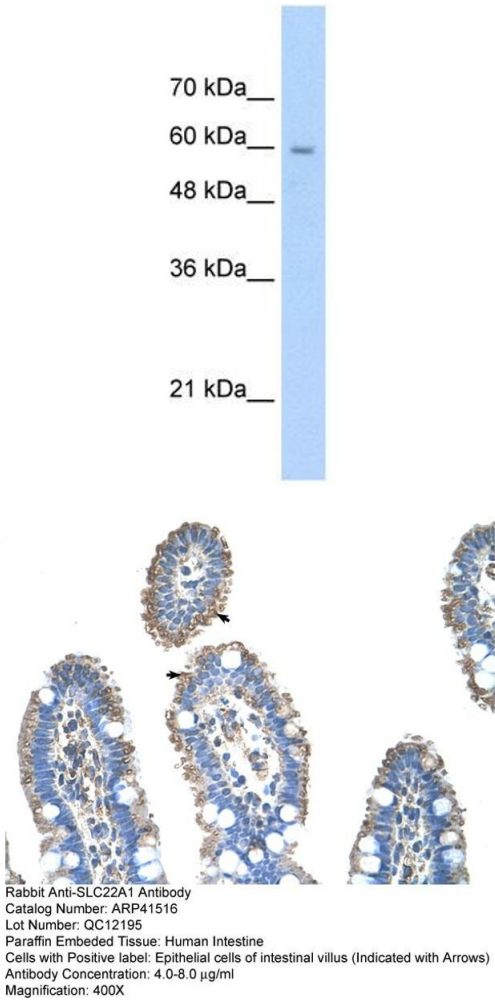
Handling

Format:	Liquid
Concentration:	Lot specific
Buffer:	Liquid. Purified antibody supplied in 1x PBS buffer with 0.09 % (w/v) sodium azide and 2 % sucrose.
Preservative:	Sodium azide

Handling

Precaution of Use:	This product contains Sodium azide: a POISONOUS AND HAZARDOUS SUBSTANCE which should be handled by trained staff only.
Handling Advice:	Avoid repeated freeze-thaw cycles.
Storage:	-20 °C
Storage Comment:	For short term use, store at 2-8°C up to 1 week. For long term storage, store at -20°C in small aliquots to prevent freeze-thaw cycles.

Validation report #102749 for Immunohistochemistry (IHC)



Western Blotting

Image 1. WB Suggested Anti-SLC22A1 Antibody Titration:
2.5ug/ml Positive Control: Jurkat cell lysate

Immunohistochemistry

Image 2. Rabbit Anti-SLC22A1 Antibody Paraffin Embedded
Tissue: Human Intestine Cellular Data: Epithelial cells of
intestinal villas Antibody Concentration: 4.0-8.0 ug/ml
Magnification: 400X

