



[Go to Product page](#)

Datasheet for ABIN2776867

## anti-Cadherin-16 antibody (N-Term)

2 Images

1 Publication

### Overview

Quantity:	100 µL
Target:	Cadherin-16 (CDH16)
Binding Specificity:	N-Term
Reactivity:	Human, Mouse, Rat, Dog, Rabbit, Cow, Guinea Pig, Horse
Host:	Rabbit
Clonality:	Polyclonal
Conjugate:	This Cadherin-16 antibody is un-conjugated
Application:	Western Blotting (WB), Immunohistochemistry (IHC)

### Product Details

Immunogen:	The immunogen is a synthetic peptide directed towards the N terminal region of human CDH16
Sequence:	SDRDEPGTAN SDLRFHILSQ APAQPSPDMF QLEPRLGALA LSPKGGSTSLD
Predicted Reactivity:	Cow: 93%, Dog: 86%, Guinea Pig: 93%, Horse: 93%, Human: 100%, Mouse: 92%, Rabbit: 93%, Rat: 100%
Characteristics:	This is a rabbit polyclonal antibody against CDH16. It was validated on Western Blot using a cell lysate as a positive control.
Purification:	Affinity Purified

### Target Details

Target:	Cadherin-16 (CDH16)
---------	---------------------

## Target Details

---

Alternative Name: [CDH16 \(CDH16 Products\)](#)

---

Background: CDH16 is a member of the cadherin superfamily, which are calcium-dependent, membrane-associated glycoproteins. CDH16 consists of an extracellular domain containing 6 cadherin domains, a transmembrane region and a truncated cytoplasmic domain but lacks the prosequence and tripeptide HAV adhesion recognition sequence typical of most classical cadherins. Expression is exclusively in kidney, where the protein functions as the principal mediator of homotypic cellular recognition, playing a role in the morphogenic direction of tissue development. This gene is a member of the cadherin superfamily, genes encoding calcium-dependent, membrane-associated glycoproteins. Mapped to a previously identified cluster of cadherin genes on chromosome 16q22.1, the gene localizes with superfamily members CDH1, CDH3, CDH5, CDH8 and CDH11. The protein consists of an extracellular domain containing 6 cadherin domains, a transmembrane region and a truncated cytoplasmic domain but lacks the prosequence and tripeptide HAV adhesion recognition sequence typical of most classical cadherins. Expression is exclusively in kidney, where the protein functions as the principal mediator of homotypic cellular recognition, playing a role in the morphogenic direction of tissue development. Publication Note: This RefSeq record includes a subset of the publications that are available for this gene. Please see the Entrez Gene record to access additional publications.

Alias Symbols: -

Protein Interaction Partner: G6PC, CRYAB, CTNNB1,

Protein Size: 829

---

Molecular Weight: 90 kDa

---

Gene ID: 1014

---

NCBI Accession: [NM\\_004062](#), [NP\\_004053](#)

---

UniProt: [O75309](#)

---

## Application Details

---

Application Notes: Optimal working dilutions should be determined experimentally by the investigator.

---

Comment: Antigen size: 829 AA

---

Restrictions: For Research Use only

---

## Handling

---

Format: Liquid

---

## Handling

---

Concentration:	Lot specific
Buffer:	Liquid. Purified antibody supplied in 1x PBS buffer with 0.09 % (w/v) sodium azide and 2 % sucrose.
Preservative:	Sodium azide
Precaution of Use:	This product contains Sodium azide: a POISONOUS AND HAZARDOUS SUBSTANCE which should be handled by trained staff only.
Handling Advice:	Avoid repeated freeze-thaw cycles.
Storage:	-20 °C
Storage Comment:	For short term use, store at 2-8°C up to 1 week. For long term storage, store at -20°C in small aliquots to prevent freeze-thaw cycles.

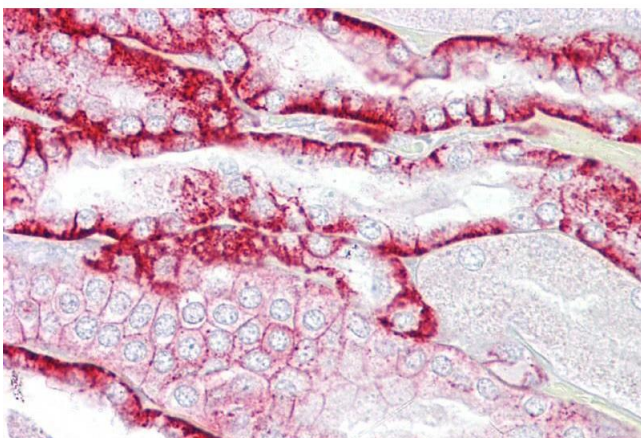
## Publications

---

Product cited in:	Veerhuis, Boshuizen, Morbin, Mazzoleni, Hoozemans, Langedijk, Tagliavini, Langeveld, Eikelenboom: "Activation of human microglia by fibrillar prion protein-related peptides is enhanced by amyloid-associated factors SAP and C1q." in: <b>Neurobiology of disease</b> , Vol. 19, Issue 1-2, pp. 273-82, (2005) ( <a href="#">PubMed</a> ).
-------------------	--

## Images

---



### Immunohistochemistry

**Image 1.** Immunohistochemistry with Kidney tissue at an antibody concentration of 5µg/ml using anti-CDH16 antibody (ARP41541\_P050)



### Western Blotting

**Image 2.** WB Suggested Anti-CDH16 Antibody Titration: 0.2-1 ug/ml Positive Control: Human brain