

Datasheet for ABIN2776869
anti-LBP antibody (C-Term)

3 Images

[Go to Product page](#)

Overview

Quantity:	100 µL
Target:	LBP
Binding Specificity:	C-Term
Reactivity:	Human, Cow, Pig, Horse
Host:	Rabbit
Clonality:	Polyclonal
Conjugate:	This LBP antibody is un-conjugated
Application:	Western Blotting (WB), Immunohistochemistry (IHC)

Product Details

Immunogen:	The immunogen is a synthetic peptide directed towards the C terminal region of human LBP
Sequence:	FLKPGKVKVE LKESKVGLFN AELLEALLNY YILNTFYPKF NDKLAEGFPL
Predicted Reactivity:	Cow: 86%, Horse: 85%, Human: 100%, Pig: 79%
Characteristics:	This is a rabbit polyclonal antibody against LBP. It was validated on Western Blot using a cell lysate as a positive control.
Purification:	Affinity Purified

Target Details

Target:	LBP
Alternative Name:	LBP (LBP Products)

Target Details

Background:	<p>LBP is involved in the acute-phase immunologic response to gram-negative bacterial infections. Gram-negative bacteria contain a glycolipid, lipopolysaccharide (LPS), on their outer cell wall. Together with bactericidal permeability-increasing protein (BPI), the protein binds LPS and interacts with the CD14 receptor, probably playing a role in regulating LPS-dependent monocyte responses. Studies in mice suggest that the protein is necessary for the rapid acute-phase response to LPS but not for the clearance of LPS from circulation. This protein is part of a family of structurally and functionally related proteins, including BPI, plasma cholesteryl ester transfer protein (CETP), and phospholipid transfer protein (PLTP). The protein encoded by this gene is involved in the acute-phase immunologic response to gram-negative bacterial infections. Gram-negative bacteria contain a glycolipid, lipopolysaccharide (LPS), on their outer cell wall. Together with bactericidal permeability-increasing protein (BPI), the encoded protein binds LPS and interacts with the CD14 receptor, probably playing a role in regulating LPS-dependent monocyte responses. Studies in mice suggest that the encoded protein is necessary for the rapid acute-phase response to LPS but not for the clearance of LPS from circulation. This protein is part of a family of structurally and functionally related proteins, including BPI, plasma cholesteryl ester transfer protein (CETP), and phospholipid transfer protein (PLTP). Finally, this gene is found on chromosome 20, immediately downstream of the BPI gene.</p> <p>Alias Symbols: MGC22233, BPIFD2</p> <p>Protein Interaction Partner: TSC22D4, PYCRL, TRA2A, PRDX4, SETD1A, CBFA2T2, BAG6, PSMA3, SMAD3, HSPB1, FTH1, C4BPA, BST1, CAMP, APOA1, RPS21, CD14, CFHR1, IRF6,</p> <p>Protein Size: 481</p>
-------------	---

Molecular Weight:	53 kDa
Gene ID:	3929
NCBI Accession:	NM_004139 , NP_004130
UniProt:	P18428
Pathways:	TLR Signaling , Activation of Innate immune Response , Cellular Response to Molecule of Bacterial Origin , Positive Regulation of Immune Effector Process , Toll-Like Receptors Cascades , Monocarboxylic Acid Catabolic Process

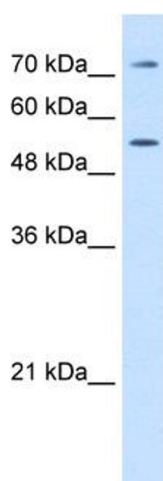
Application Details

Application Notes:	Optimal working dilutions should be determined experimentally by the investigator.
Comment:	Antigen size: 481 AA
Restrictions:	For Research Use only

Handling

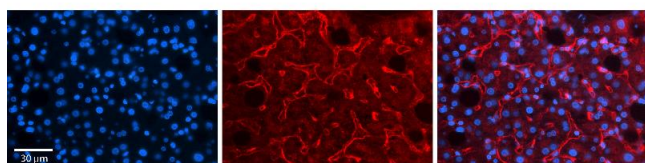
Format:	Liquid
Concentration:	Lot specific
Buffer:	Liquid. Purified antibody supplied in 1x PBS buffer with 0.09 % (w/v) sodium azide and 2 % sucrose.
Preservative:	Sodium azide
Precaution of Use:	This product contains Sodium azide: a POISONOUS AND HAZARDOUS SUBSTANCE which should be handled by trained staff only.
Handling Advice:	Avoid repeated freeze-thaw cycles.
Storage:	-20 °C
Storage Comment:	For short term use, store at 2-8°C up to 1 week. For long term storage, store at -20°C in small aliquots to prevent freeze-thaw cycles.

Images



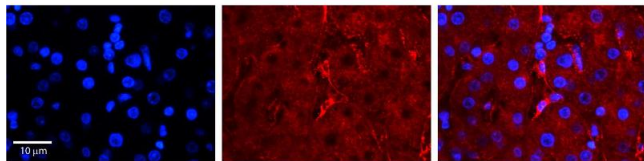
Western Blotting

Image 1. WB Suggested Anti-LBP Antibody Titration: 0.2-1 ug/ml Positive Control: HepG2 cell lysate



Immunohistochemistry

Image 2. Rabbit Anti-LBP Antibody Formalin Fixed Paraffin Embedded Tissue: Human Liver Tissue Observed Staining: Cytoplasm and plasma membrane in endothelial cells in sinusoids Primary Antibody Concentration: 1:100 Other Working Concentrations: 1:600 Secondary Antibody: Donkey anti-Rabbit-Cy3 Secondary Antibody Concentration: 1:200 Magnification: 20X Exposure Time: 0.5 - 2.0 sec



Immunohistochemistry

Image 3. LBP antibody - C-terminal region Formalin Fixed Paraffin Embedded Tissue: Human Liver Tissue Observed Staining: Cell membrane in endothelial cell in sinusoids Primary Antibody Concentration: 1:100 Other Working Concentrations: 1/600 Secondary Antibody: Donkey anti-Rabbit-Cy3 Secondary Antibody Concentration: 1:200 Magnification: 20X Exposure Time: 0.5 - 2.0 sec