

Datasheet for ABIN2776873  
**anti-Klotho antibody (Middle Region)**[Go to Product page](#)

## 3 Images

## Overview

Quantity:	100 µL
Target:	Klotho (KL)
Binding Specificity:	Middle Region
Reactivity:	Human, Mouse, Rat, Rabbit, Horse, Cow, Dog, Guinea Pig, Zebrafish (Danio rerio)
Host:	Rabbit
Clonality:	Polyclonal
Conjugate:	This Klotho antibody is un-conjugated
Application:	Western Blotting (WB), Immunohistochemistry (IHC)

## Product Details

Immunogen:	The immunogen is a synthetic peptide directed towards the middle region of human KL
Sequence:	GRLAPGIRGS PRLGYLVAHN LLLAHAKVWH LYNTSFRPTQ GGQVSIALSS
Predicted Reactivity:	Cow: 93%, Dog: 100%, Guinea Pig: 100%, Horse: 100%, Human: 100%, Mouse: 100%, Rabbit: 100%, Rat: 100%, Zebrafish: 79%
Characteristics:	This is a rabbit polyclonal antibody against KL. It was validated on Western Blot using a cell lysate as a positive control.
Purification:	Affinity Purified

## Target Details

Target:	Klotho (KL)
---------	-------------

## Target Details

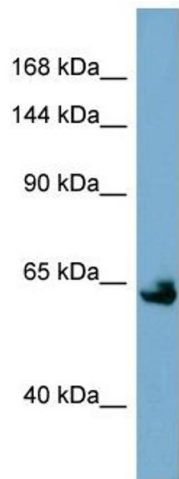
Alternative Name:	KL ( <a href="#">KL Products</a> )
Background:	<p>This gene encodes a type-I membrane protein that is related to beta-glucosidases. Reduced production of this protein has been observed in patients with chronic renal failure (CRF), and this may be one of the factors underlying the degenerative processes (</p> <p>Alias Symbols: -</p> <p>Protein Interaction Partner: IGF1R,</p> <p>Protein Size: 549</p>
Molecular Weight:	60 kDa
Gene ID:	9365
NCBI Accession:	<a href="#">NM_004795</a>
Pathways:	<a href="#">Fc-epsilon Receptor Signaling Pathway</a> , <a href="#">EGFR Signaling Pathway</a> , <a href="#">Neurotrophin Signaling Pathway</a> , <a href="#">Hormone Activity</a> , <a href="#">Growth Factor Binding</a>

## Application Details

Application Notes:	Optimal working dilutions should be determined experimentally by the investigator.
Comment:	Antigen size: 549 AA
Restrictions:	For Research Use only

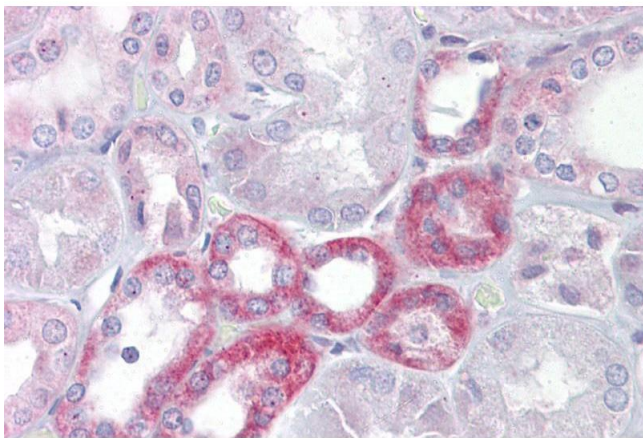
## Handling

Format:	Liquid
Concentration:	Lot specific
Buffer:	Liquid. Purified antibody supplied in 1x PBS buffer with 0.09 % (w/v) sodium azide and 2 % sucrose.
Preservative:	Sodium azide
Precaution of Use:	This product contains Sodium azide: a POISONOUS AND HAZARDOUS SUBSTANCE which should be handled by trained staff only.
Handling Advice:	Avoid repeated freeze-thaw cycles.
Storage:	-20 °C
Storage Comment:	For short term use, store at 2-8°C up to 1 week. For long term storage, store at -20°C in small aliquots to prevent freeze-thaw cycles.



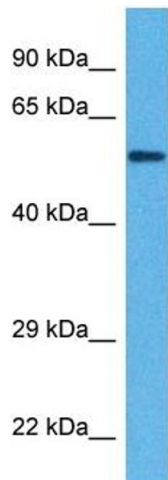
**Western Blotting**

**Image 1.** WB Suggested Anti-KL Antibody Titration: 0.2-1 ug/ml ELISA Titer: 1:62500 Positive Control: NCI-H226 cell lysate



**Immunohistochemistry**

**Image 2.** Immunohistochemistry with Kidney tissue at an antibody concentration of 5µg/ml using anti-KL antibody (ARP41551\_P050)



**Western Blotting**

**Image 3.** Host: Rabbit Target Name: KL Sample Tissue: Human DLD1 Whole Cell Antibody Dilution: 1 ug/ml