

Datasheet for ABIN2776886
anti-MASP2 antibody (Middle Region)[Go to Product page](#)

2 Images

Overview

Quantity:	100 µL
Target:	MASP2
Binding Specificity:	Middle Region
Reactivity:	Human, Mouse, Rat, Cow, Pig
Host:	Rabbit
Clonality:	Polyclonal
Conjugate:	This MASP2 antibody is un-conjugated
Application:	Western Blotting (WB)

Product Details

Immunogen:	The immunogen is a synthetic peptide corresponding to a region of Mouse
Sequence:	YPQYPKLSS CTYSIRLEDG FSVILDFVES FDVETHPEAQ CPYDSLKIQT
Predicted Reactivity:	Cow: 100%, Guinea Pig: 79%, Horse: 77%, Human: 100%, Mouse: 100%, Pig: 93%, Rat: 92%, Zebrafish: 77%
Characteristics:	This is a rabbit polyclonal antibody against Masp2. It was validated on Western Blot.
Purification:	Affinity Purified

Target Details

Target:	MASP2
Alternative Name:	Masp2 (MASP2 Products)

Target Details

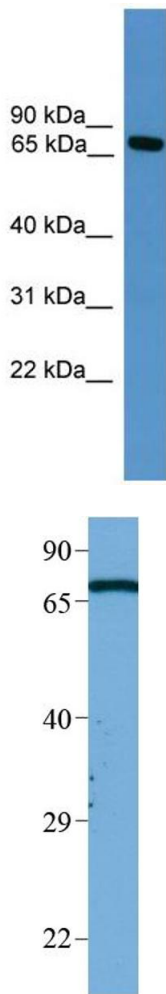
Background:	<p>Masp2 is a serum protease that plays an important role in the activation of the complement system via mannose-binding lectin. After activation by auto-catalytic cleavage it cleaves C2 and C4, leading to their activation and to the formation of C3 convertase.</p> <p>Alias Symbols: MASP-2, MASP19</p> <p>Protein Size: 685</p>
Molecular Weight:	75 kDa
Gene ID:	17175
NCBI Accession:	NM_001003893 , NP_001003893
UniProt:	Q91WP0
Pathways:	Complement System

Application Details

Application Notes:	Optimal working dilutions should be determined experimentally by the investigator.
Comment:	Antigen size: 685 AA
Restrictions:	For Research Use only

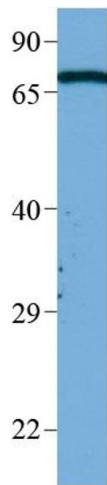
Handling

Format:	Liquid
Concentration:	Lot specific
Buffer:	Liquid. Purified antibody supplied in 1x PBS buffer with 0.09 % (w/v) sodium azide and 2 % sucrose.
Preservative:	Sodium azide
Precaution of Use:	This product contains Sodium azide: a POISONOUS AND HAZARDOUS SUBSTANCE which should be handled by trained staff only.
Handling Advice:	Avoid repeated freeze-thaw cycles.
Storage:	-20 °C
Storage Comment:	For short term use, store at 2-8°C up to 1 week. For long term storage, store at -20°C in small aliquots to prevent freeze-thaw cycles.



Western Blotting

Image 1. WB Suggested Anti-Masp2 Antibody Titration: 0.2-1 ug/ml ELISA Titer: 1:62500 Positive Control: Mouse Heart



Western Blotting

Image 2. WB Suggested Anti-Masp2 Antibody Titration: 1 ug/ml Sample Type: HeLa