

Datasheet for ABIN2776904

anti-ANAPC7 antibody (C-Term)[Go to Product page](#)**2** Images

Overview

Quantity:	100 µL
Target:	ANAPC7
Binding Specificity:	C-Term
Reactivity:	Human, Mouse, Rat, Dog, Guinea Pig, Horse, Rabbit
Host:	Rabbit
Clonality:	Polyclonal
Conjugate:	This ANAPC7 antibody is un-conjugated
Application:	Western Blotting (WB), Immunohistochemistry (IHC)

Product Details

Immunogen:	The immunogen is a synthetic peptide directed towards the C terminal region of human ANAPC7
Sequence:	ALSLDPNDQK SLEGMQKMEK EESPTDATQE EDVDDMEGSG EEGDLEGSDS
Predicted Reactivity:	Dog: 100%, Guinea Pig: 100%, Horse: 100%, Human: 100%, Mouse: 100%, Rabbit: 100%, Rat: 100%
Characteristics:	This is a rabbit polyclonal antibody against ANAPC7. It was validated on Western Blot and immunohistochemistry.
Purification:	Affinity Purified

Target Details

Target:	ANAPC7
---------	--------

Target Details

Alternative Name:	ANAPC7 (ANAPC7 Products)
Background:	<p>The anaphase-promoting complex (APC) consists of at least 8 protein subunits, including APC5, CDC27 (APC3), CDC16 (APC6), and CDC23 (APC8).The anaphase-promoting complex (APC) consists of at least 8 protein subunits, including APC5, CDC27 (APC3, MIM 116946), CDC16 (APC6, MIM 603461), and CDC23 (APC8, MIM 603462).[supplied by OMIM].</p> <p>Alias Symbols: APC7</p> <p>Protein Interaction Partner: ANAPC4, ANAPC2, UBE2S, CDC20, UBC, PHF8, SOX2, PTEN, CDC27, BUB1B, TRIM33, ANAPC5, ANAPC15, VCP, CDH1, PAXIP1, MDC1, TP53BP1, NOTCH1, ANAPC1, ANAPC13, ANAPC10, CDC16, FBXO5, UBD, Asap1, USP37, COPS5, UL21A, ANAPC7, CREBBP, SH3KBP1, SUMO2, SMARCAD1, Anapc1</p> <p>Protein Size: 565</p>
Molecular Weight:	62 kDa
Gene ID:	51434
NCBI Accession:	NM_016238 , NP_057322
UniProt:	Q9UJX3

Application Details

Application Notes:	Optimal working dilutions should be determined experimentally by the investigator.
Comment:	Antigen size: 565 AA
Restrictions:	For Research Use only

Handling

Format:	Liquid
Concentration:	Lot specific
Buffer:	Liquid. Purified antibody supplied in 1x PBS buffer with 0.09 % (w/v) sodium azide and 2 % sucrose.
Preservative:	Sodium azide
Precaution of Use:	This product contains Sodium azide: a POISONOUS AND HAZARDOUS SUBSTANCE which should be handled by trained staff only.
Handling Advice:	Avoid repeated freeze-thaw cycles.

Handling

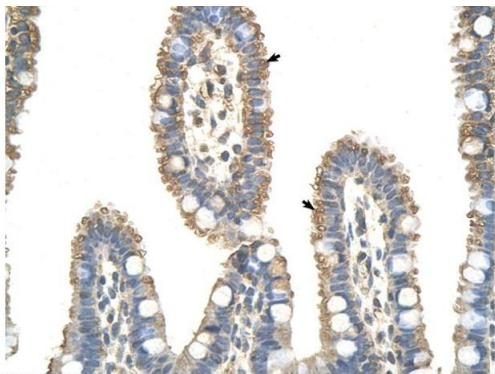
Storage:	-20 °C
Storage Comment:	For short term use, store at 2-8°C up to 1 week. For long term storage, store at -20°C in small aliquots to prevent freeze-thaw cycles.

Images



Western Blotting

Image 1. WB Suggested Anti-ANAPC7 Antibody Titration:
0.2-1 ug/ml Positive Control: Jurkat cell lysate



Immunohistochemistry

Image 2. Rabbit Anti-ANAPC7 Antibody Paraffin Embedded
Tissue: Human Intestine Cellular Data: Epithelial cells of
intestinal villas Antibody Concentration: 4.0-8.0 ug/ml
Magnification: 400X

Rabbit Anti-ANAPC7 Antibody
Catalog Number: ARP41605
Lot Number: QC12260
Paraffin Embedded Tissue: Human Intestine
Cells with Positive label: Epithelial cells of intestinal villus (Indicated with Arrows)
Antibody Concentration: 4.0-8.0 µg/ml
Magnification: 400X