



[Go to Product page](#)

Datasheet for ABIN2776913

anti-C1orf116 antibody (Middle Region)

1 Image

Overview

| | |
|----------------------|--|
| Quantity: | 100 µL |
| Target: | C1orf116 (c1orf116) |
| Binding Specificity: | Middle Region |
| Reactivity: | Human, Mouse, Rat, Rabbit, Horse, Cow, Dog, Guinea Pig |
| Host: | Rabbit |
| Clonality: | Polyclonal |
| Conjugate: | This C1orf116 antibody is un-conjugated |
| Application: | Western Blotting (WB) |

Product Details

| | |
|-----------------------|--|
| Immunogen: | The immunogen is a synthetic peptide directed towards the middle region of human C1orf116 |
| Sequence: | SGLTLQESNT PGLRQMNFKS NTLERSGVGL SSSLSTEKDA SPKTSTSLGK |
| Predicted Reactivity: | Cow: 93%, Dog: 93%, Guinea Pig: 93%, Horse: 100%, Human: 100%, Mouse: 100%, Rabbit: 100%, Rat: 100% |
| Characteristics: | This is a rabbit polyclonal antibody against C1orf116. It was validated on Western Blot using a cell lysate as a positive control. |
| Purification: | Affinity Purified |

Target Details

| | |
|---------|---------------------|
| Target: | C1orf116 (c1orf116) |
|---------|---------------------|

Target Details

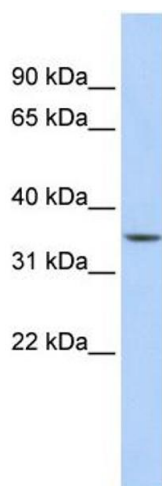
| | |
|-------------------|---|
| Alternative Name: | C1orf116 (c1orf116 Products) |
| Background: | <p>C1orf116 belongs to the SARG family. It is a putative androgen-specific receptor. It is highly expressed in prostate.</p> <p>Alias Symbols: DKFZp666H2010, FLJ36507, MGC2742, MGC4309, SARG</p> <p>Protein Interaction Partner: HOMER1, SMAD3, SMAD2,</p> <p>Protein Size: 355</p> |
| Molecular Weight: | 37 kDa |
| Gene ID: | 79098 |
| NCBI Accession: | NM_001083924 , NP_001077393 |
| UniProt: | Q9BW04 |

Application Details

| | |
|--------------------|--|
| Application Notes: | Optimal working dilutions should be determined experimentally by the investigator. |
| Comment: | Antigen size: 355 AA |
| Restrictions: | For Research Use only |

Handling

| | |
|--------------------|---|
| Format: | Liquid |
| Concentration: | Lot specific |
| Buffer: | Liquid. Purified antibody supplied in 1x PBS buffer with 0.09 % (w/v) sodium azide and 2 % sucrose. |
| Preservative: | Sodium azide |
| Precaution of Use: | This product contains Sodium azide: a POISONOUS AND HAZARDOUS SUBSTANCE which should be handled by trained staff only. |
| Handling Advice: | Avoid repeated freeze-thaw cycles. |
| Storage: | -20 °C |
| Storage Comment: | For short term use, store at 2-8°C up to 1 week. For long term storage, store at -20°C in small aliquots to prevent freeze-thaw cycles. |



Western Blotting

Image 1. WB Suggested Anti-C1orf116 Antibody Titration:
0.2-1 ug/ml ELISA Titer: 1:312500 Positive Control: Human
Liver