

Datasheet for ABIN2776915
anti-GGTLC1 antibody (C-Term)[Go to Product page](#)

2 Images

Overview

Quantity:	100 µL
Target:	GGTLC1
Binding Specificity:	C-Term
Reactivity:	Human, Dog, Mouse, Rat, Cow, Guinea Pig, Horse, Rabbit
Host:	Rabbit
Clonality:	Polyclonal
Conjugate:	This GGTLC1 antibody is un-conjugated
Application:	Immunohistochemistry (IHC), Western Blotting (WB)

Product Details

Immunogen:	The immunogen is a synthetic peptide directed towards the C terminal region of human GGTLA4
Sequence:	DQEVTALET RHHHTQITST FIAVVQAIVR MAGGWAAASD SRKGGEPAGY
Predicted Reactivity:	Cow: 100%, Dog: 100%, Guinea Pig: 100%, Horse: 100%, Human: 100%, Mouse: 100%, Rabbit: 100%, Rat: 100%
Characteristics:	This is a rabbit polyclonal antibody against GGTLA4. It was validated on Western Blot and immunohistochemistry.
Purification:	Protein A purified

Target Details

Target:	GGTLC1
---------	--------

Target Details

Alternative Name:	GGTLA4 (GGTLC1 Products)
Background:	<p>Gamma-glutamyl transpeptidase is a membrane-bound protein that is important in the metabolism of glutathione. The protein is similar in sequence to several members of the gamma-glutamyl transpeptidase family. Gamma-glutamyl transpeptidase is a membrane-bound protein that is important in the metabolism of glutathione. The protein encoded by this gene is similar in sequence to several members of the gamma-glutamyl transpeptidase family. Three transcript variants encoding the same protein have been found for this gene.</p> <p>Alias Symbols: RP5-831C21.2, MGC50550, dJ831C21.2, GGTL6, GGTLA3, GGTLA4, dJ831C21.1</p> <p>Protein Interaction Partner: MYOC,</p> <p>Protein Size: 225</p>
Molecular Weight:	25 kDa
Gene ID:	92086
NCBI Accession:	NM_080920 , NP_563577
UniProt:	Q9BX51

Application Details

Application Notes:	Optimal working dilutions should be determined experimentally by the investigator.
Comment:	Antigen size: 225 AA
Restrictions:	For Research Use only

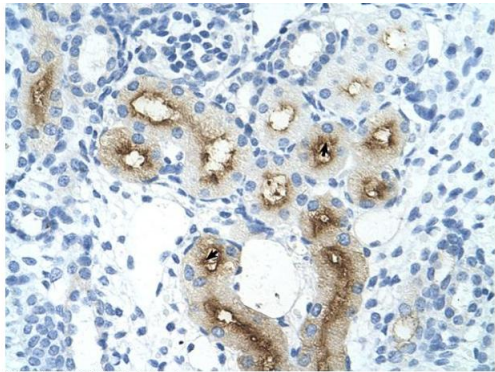
Handling

Format:	Liquid
Concentration:	Lot specific
Buffer:	Liquid. Purified antibody supplied in 1x PBS buffer with 0.09 % (w/v) sodium azide and 2 % sucrose.
Preservative:	Sodium azide
Precaution of Use:	This product contains Sodium azide: a POISONOUS AND HAZARDOUS SUBSTANCE which should be handled by trained staff only.
Handling Advice:	Avoid repeated freeze-thaw cycles.
Storage:	-20 °C

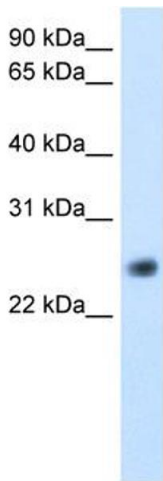
Handling

Storage Comment: For short term use, store at 2-8°C up to 1 week. For long term storage, store at -20°C in small aliquots to prevent freeze-thaw cycles.

Images



Rabbit Anti-GGTLA4 Antibody
Catalog Number: ARP41639
Lot Number: QC12404
Paraffin Embedded Tissue: Human Kidney
Cells with Positive label: Epithelial cells of renal tubule (Indicated with Arrows)
Antibody Concentration: 4.0-8.0 µg/ml
Magnification: 400X



Immunohistochemistry

Image 1. Rabbit Anti-GGTLA4 Antibody Paraffin Embedded
Tissue: Human Kidney Cellular Data: Epithelial cells of renal
tubule Antibody Concentration: 4.0-8.0 ug/ml Magnification:
400X

Western Blotting

Image 2. WB Suggested Anti-GGTLA4 Antibody Titration:
5.0ug/ml Positive Control: Human kidney