

Datasheet for ABIN2776923  
**anti-ALAS2 antibody (N-Term)**[Go to Product page](#)

1 Image

1 Publication

## Overview

Quantity:	100 µL
Target:	ALAS2
Binding Specificity:	N-Term
Reactivity:	Human, Mouse, Rat, Cow, Rabbit, Dog, Horse, Pig
Host:	Rabbit
Clonality:	Polyclonal
Conjugate:	This ALAS2 antibody is un-conjugated
Application:	Western Blotting (WB)

## Product Details

Immunogen:	The immunogen is a synthetic peptide directed towards the N terminal region of human ALAS2
Sequence:	CPILATQGPN CSQIHLKATK AGGDSPSWAK GHCPFMLSEL QDGKSKIVQK
Predicted Reactivity:	Cow: 100%, Dog: 100%, Horse: 100%, Human: 100%, Mouse: 100%, Pig: 100%, Rabbit: 79%, Rat: 100%
Characteristics:	This is a rabbit polyclonal antibody against ALAS2. It was validated on Western Blot using a cell lysate as a positive control.
Purification:	Affinity Purified

## Target Details

Target:	ALAS2
---------	-------

## Target Details

Alternative Name:	ALAS2 ( <a href="#">ALAS2 Products</a> )
Background:	<p>ALAS2 specifies an erythroid-specific mitochondrially located enzyme. The protein catalyzes the first step in the heme biosynthetic pathway. Defects in its gene cause X-linked pyridoxine-responsive sideroblastic anemia. Alternatively spliced transcript variants encoding different isoforms have been identified. The product of this gene specifies an erythroid-specific mitochondrially located enzyme. The encoded protein catalyzes the first step in the heme biosynthetic pathway. Defects in this gene cause X-linked pyridoxine-responsive sideroblastic anemia. Alternatively spliced transcript variants encoding different isoforms have been identified.</p> <p>Alias Symbols: ANH1, ASB, XLSA, ALASE, XLDPP, XLEPP, ALAS-E</p> <p>Protein Interaction Partner: BANP, GRB2, SUCLA2, RABGGTB,</p> <p>Protein Size: 550</p>
Molecular Weight:	60 kDa
Gene ID:	212
NCBI Accession:	<a href="#">NM_001037967</a> , <a href="#">NP_001033056</a>
UniProt:	<a href="#">P22557</a>
Pathways:	<a href="#">Transition Metal Ion Homeostasis</a>

## Application Details

Application Notes:	Optimal working dilutions should be determined experimentally by the investigator.
Comment:	Antigen size: 550 AA
Restrictions:	For Research Use only

## Handling

Format:	Liquid
Concentration:	Lot specific
Buffer:	Liquid. Purified antibody supplied in 1x PBS buffer with 0.09 % (w/v) sodium azide and 2 % sucrose.
Preservative:	Sodium azide
Precaution of Use:	This product contains Sodium azide: a POISONOUS AND HAZARDOUS SUBSTANCE which should be handled by trained staff only.

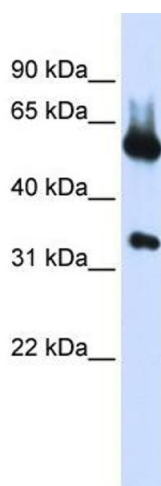
## Handling

Handling Advice:	Avoid repeated freeze-thaw cycles.
Storage:	-20 °C
Storage Comment:	For short term use, store at 2-8°C up to 1 week. For long term storage, store at -20°C in small aliquots to prevent freeze-thaw cycles.

## Publications

Product cited in:	Lazrek, Goffard, Schanen, Karquel, Bocket, Lion, Devaux, Hedouin, Gosset, Hober: "Detection of hepatitis C virus antibodies and RNA among medicolegal autopsy cases in Northern France." in: <b>Diagnostic microbiology and infectious disease</b> , Vol. 55, Issue 1, pp. 55-8, (2006) ( <a href="#">PubMed</a> ).
-------------------	---

## Images



### Western Blotting

**Image 1.** WB Suggested Anti-ALAS2 Antibody Titration: 0.2-1 ug/ml ELISA Titer: 1:312500 Positive Control: Transfected 293T