



[Go to Product page](#)

Datasheet for ABIN2776924

anti-ALAS2 antibody (C-Term)

1 Image

1 Publication

Overview

Quantity:	100 µL
Target:	ALAS2
Binding Specificity:	C-Term
Reactivity:	Human, Mouse, Rat, Cow, Rabbit, Dog, Guinea Pig, Horse, Zebrafish (Danio rerio), Sheep, Goat
Host:	Rabbit
Clonality:	Polyclonal
Conjugate:	This ALAS2 antibody is un-conjugated
Application:	Western Blotting (WB)

Product Details

Immunogen:	The immunogen is a synthetic peptide directed towards the C terminal region of human ALAS2
Sequence:	PTVPRGEELL RLAPSPHHSP QMMEDFVEKL LLAWTAVGLP LQDVSVAAACN
Predicted Reactivity:	Cow: 100%, Dog: 100%, Goat: 79%, Guinea Pig: 100%, Horse: 100%, Human: 100%, Mouse: 100%, Rabbit: 100%, Rat: 100%, Sheep: 79%, Zebrafish: 85%
Characteristics:	This is a rabbit polyclonal antibody against ALAS2. It was validated on Western Blot using a cell lysate as a positive control.
Purification:	Affinity Purified

Target Details

Target:	ALAS2
---------	-------

Target Details

Alternative Name:	ALAS2 (ALAS2 Products)
Background:	<p>ALAS2 specifies an erythroid-specific mitochondrially located enzyme. The protein catalyzes the first step in the heme biosynthetic pathway. Defects in its gene cause X-linked pyridoxine-responsive sideroblastic anemia. Alternatively spliced transcript variants encoding different isoforms have been identified. The product of this gene specifies an erythroid-specific mitochondrially located enzyme. The encoded protein catalyzes the first step in the heme biosynthetic pathway. Defects in this gene cause X-linked pyridoxine-responsive sideroblastic anemia. Alternatively spliced transcript variants encoding different isoforms have been identified.</p> <p>Alias Symbols: ANH1, ASB, XLSA, ALASE, XLDPP, XLEPP, ALAS-E</p> <p>Protein Interaction Partner: BANP, GRB2, SUCLA2, RABGGTB,</p> <p>Protein Size: 550</p>
Molecular Weight:	60 kDa
Gene ID:	212
NCBI Accession:	NM_001037967 , NP_001033056
UniProt:	P22557
Pathways:	Transition Metal Ion Homeostasis

Application Details

Application Notes:	Optimal working dilutions should be determined experimentally by the investigator.
Comment:	Antigen size: 550 AA
Restrictions:	For Research Use only

Handling

Format:	Liquid
Concentration:	Lot specific
Buffer:	Liquid. Purified antibody supplied in 1x PBS buffer with 0.09 % (w/v) sodium azide and 2 % sucrose.
Preservative:	Sodium azide
Precaution of Use:	This product contains Sodium azide: a POISONOUS AND HAZARDOUS SUBSTANCE which should be handled by trained staff only.

Handling

Handling Advice: Avoid repeated freeze-thaw cycles.

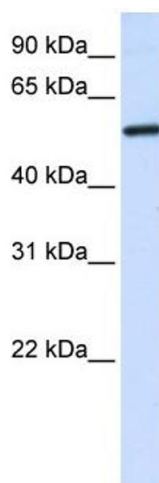
Storage: -20 °C

Storage Comment: For short term use, store at 2-8°C up to 1 week. For long term storage, store at -20°C in small aliquots to prevent freeze-thaw cycles.

Publications

Product cited in: Mehrle, Rosenfelder, Schupp, del Val, Arlt, Hahne, Bechtel, Simpson, Hofmann, Hide, Glatting, Huber, Pepperkok, Poustka, Wiemann: "The LIFEdb database in 2006." in: **Nucleic acids research**, Vol. 34, Issue Database issue, pp. D415-8, (2005) ([PubMed](#)).

Images



Western Blotting

Image 1. WB Suggested Anti-ALAS2 Antibody Titration: 0.2-1 ug/ml ELISA Titer: 1:62500 Positive Control: Transfected 293T