

Datasheet for ABIN2776928  
**anti-ASL antibody (Middle Region)**[2 Images](#)[2 Publications](#)[Go to Product page](#)

## Overview

Quantity:	100 µL
Target:	ASL
Binding Specificity:	Middle Region
Reactivity:	Human, Mouse, Rat, Cow, Zebrafish (Danio rerio), Guinea Pig, Horse, Rabbit, Dog, Goat, Saccharomyces cerevisiae
Host:	Rabbit
Clonality:	Polyclonal
Conjugate:	This ASL antibody is un-conjugated
Application:	Western Blotting (WB)

## Product Details

Immunogen:	The immunogen is a synthetic peptide directed towards the middle region of human ASL
Sequence:	LILYCTKEFS FVQLSDAYST GSSLMPQKKN PDSLELIRSK AGRVFGREDK
Predicted Reactivity:	Cow: 100%, Dog: 100%, Goat: 100%, Guinea Pig: 100%, Horse: 100%, Human: 100%, Mouse: 100%, Rabbit: 100%, Rat: 100%, Yeast: 93%, Zebrafish: 93%
Characteristics:	This is a rabbit polyclonal antibody against ASL. It was validated on Western Blot using a cell lysate as a positive control.
Purification:	Protein A purified

## Target Details

Target:	ASL
---------	-----

## Target Details

Alternative Name:	ASL ( <a href="#">ASL Products</a> )
Background:	<p>ASL is a member of the lyase 1 family. The protein forms a cytosolic homotetramer and primarily catalyzes the reversible hydrolytic cleavage of argininosuccinate into arginine and fumarate, an essential step in the liver in detoxifying ammonia via the urea cycle. Mutations in its gene result in the autosomal recessive disorder argininosuccinic aciduria, or argininosuccinic acid lyase deficiency. This gene encodes a member of the lyase 1 family. The encoded protein forms a cytosolic homotetramer and primarily catalyzes the reversible hydrolytic cleavage of argininosuccinate into arginine and fumarate, an essential step in the liver in detoxifying ammonia via the urea cycle. Mutations in this gene result in the autosomal recessive disorder argininosuccinic aciduria, or argininosuccinic acid lyase deficiency. A nontranscribed pseudogene is also located on the long arm of chromosome 22. Alternatively spliced transcript variants encoding different isoforms have been described.</p> <p>Alias Symbols: ASAL</p> <p>Protein Interaction Partner: WDYHV1, ASL, GINS4, NCDN, TUFGM, PDHA1, NEDD8, HK1, GDI1, BAG3, OVGP1, HMOX1, FBP1, CSNK2A2, UBC, QARS,</p> <p>Protein Size: 444</p>
Molecular Weight:	49 kDa
Gene ID:	435
NCBI Accession:	<a href="#">NM_001024944</a> , <a href="#">NP_001020115</a>
UniProt:	<a href="#">P04424</a>
Pathways:	<a href="#">Response to Growth Hormone Stimulus</a>

## Application Details

Application Notes:	Optimal working dilutions should be determined experimentally by the investigator.
Comment:	Antigen size: 444 AA
Restrictions:	For Research Use only

## Handling

Format:	Liquid
Concentration:	Lot specific
Buffer:	Liquid. Purified antibody supplied in 1x PBS buffer with 0.09 % (w/v) sodium azide and 2 %

## Handling

	sucrose.
Preservative:	Sodium azide
Precaution of Use:	This product contains Sodium azide: a POISONOUS AND HAZARDOUS SUBSTANCE which should be handled by trained staff only.
Handling Advice:	Avoid repeated freeze-thaw cycles.
Storage:	-20 °C
Storage Comment:	For short term use, store at 2-8°C up to 1 week. For long term storage, store at -20°C in small aliquots to prevent freeze-thaw cycles.

## Publications

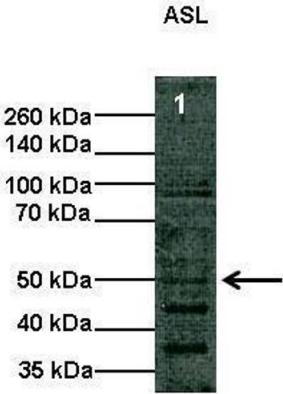
Product cited in:	Gerhard, Wagner, Feingold, Shenmen, Grouse, Schuler, Klein, Old, Rasooly, Good, Guyer, Peck, Derge, Lipman, Collins, Jang, Sherry, Feolo, Misquitta, Lee, Rotmistrovsky, Greenhut, Schaefer, Buetow et al.: "The status, quality, and expansion of the NIH full-length cDNA project: the Mammalian Gene Collection (MGC). ..." in: <b>Genome research</b> , Vol. 14, Issue 10B, pp. 2121-7, (2004) ( <a href="#">PubMed</a> ).
-------------------	--

## Images



### Western Blotting

**Image 1.** WB Suggested Anti-ASL Antibody Titration: 5.0ug/ml Positive Control: Human Liver



Western Blotting

**Image 2.** Lanes: Lane1: 10 ug COS-7 cell lysate Primary Antibody Dilution: 1:1000 Secondary Antibody: Anti-rabbit HRP Secondary Antibody Dilution: 1:2000 Gene Name: ASL Submitted by: Shawn Elms. Georgia Health Science University

See Immunoblot 2 Data and Customer Feedback for more Information